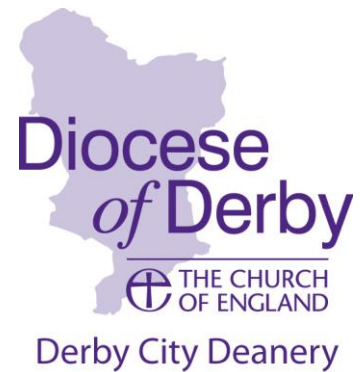


Derby City Deanery NEWSLETTER

November 2016 /#003



From the Area Dean Revd Canon Dr Simon Taylor

Dear friends,

It is a privilege to welcome you to this Advent newsletter. I hope you will find resources, ideas and opportunities in it that will be helpful in preparing you to celebrate Christmas.

Whilst Advent is a time for looking forward, I want to take this opportunity to look backwards and say a huge 'thank you' to Julian Hollywell. Julian was Rural Dean of Derby North and has been a great support to me during the transition as Assistant Area Dean of Derby City Deanery. Now that the Deanery has been launched and has established itself, Julian has decided to step down. Thank you Julian for your wisdom and for all you have done, and for your continuing role as a member of the Deanery Chapter.

May I wish you all a blessed Christmas and a very happy New Year. I look forward to our working together in 2017.

with my prayers and best wishes,



This newsletter comes in two parts – six pages of news and a supplement of posters for you to print off and display as appropriate.

Issue no 004 will be available late January, and will look at modern-day slavery, and also Derby's support for refugees and asylum seekers. The deadline for this issue is Thursday 5th January 2017.

Thereafter, we hope to send out a newsletter every two months (Jan, Mar, May, Jul, Sep, Nov). The way the newsletter is circulated is under review – whether to email it to parishes to print out the copies they need, or to look for sponsorship for paper copies, or a combination of the two. Your views are important and can be sent to jo.simister@derby.anglican.org.

Area Dean: Canon Dr Simon Taylor simon.taylor@derby.anglican.org

Deanery Administrator: Ms Jo Simister jo.simister@derby.anglican.org

From Deanery Administrator Jo Simister

ANNOUNCEMENT OF DEANERY SYNOD CLERGY & LAY REPRESENTATIVES:

At the Deanery Synod on 13th September, the following were appointed to serve Derby City Deanery as Lay and Clergy representatives.

Clergy Representative: Revd Beth Honey

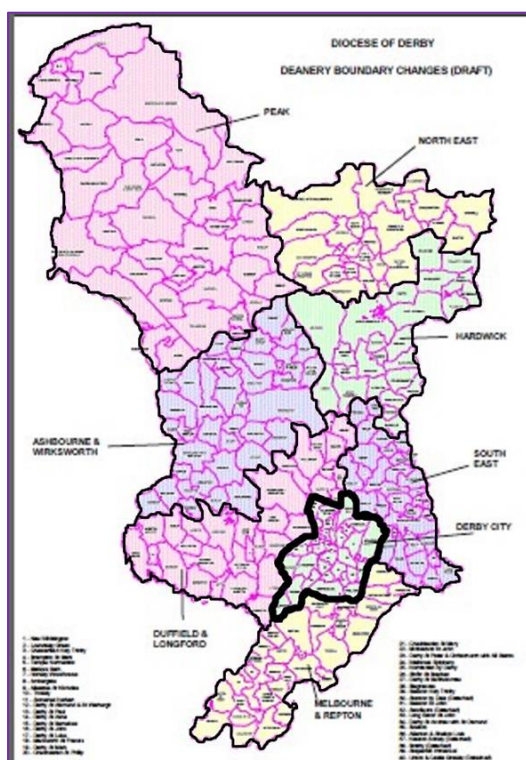


Beth is an ordained pioneer minister and she leads Derwent Oak, a church which has grown up where she and her husband Ben and their two small boys live, in the Derwent Ward of Derby (she has been licensed to this council ward since June 2013). Beth spent a decade in the East Midlands growing up and has found herself at home returning to Derby. Beth enjoys being outdoors with her family, looking at and sometimes making art, and dreaming of more and more people in Derwent knowing they are loved by God and set free to be creative and productive for the sake of others.

Lay Representative: Mrs Alison Henshaw



Although I live in Melbourne I have attended St Peter's church in Chellaston since Harvest 1990 when my husband became the organist. I have served on the PCC since 1991 and occasionally lead All Together Worship on a Sunday morning and the Quiet Service in the evening. I have two daughters who are both living and working in London. I teach Latin at Nottingham Girls' High School, run the Guides in Chellaston, and enjoy singing with the church choir.



DERBY CITY DEANERY LOCATION:

Our Deanery covers a relatively small area, but it contains a quarter of the Diocese's population. It's also located in the southern part of the Diocese, which makes it quite difficult for people travelling from, say, Peak for events in the winter!

Your Synod members will be forging a strategy for mission and prayer and other activities in the city – please pray for their wise counsels.

DEANERY CONTACTS DATABASE:

Continuing thanks to those parishes which have notified up-to-date contact details of key people. I encourage you to check the details on the diocese database and change them yourselves, or notify Rachel Shock, who is the only 'third person' allowed to meddle with the database. (You can contact Rachel at Rachel.Shock@derby.anglican.org.)

DEANERY YOUTH PILGRIMAGE TO TAIZÉ

Assistant Area Dean Revd Trudie Morris spoke at Synod to propose a Deanery Youth Pilgrimage (ages 15-30 or thereabout) to Taizé next May, in half term. The Taizé ministry is particularly attuned to this age group.

Usually pilgrimages go for a week, but on this occasion half a week is proposed. It would be heavily subsidised. (see p 4)

Trudie has thrown out a challenge to us all: to find some young people in our parishes and for us to accompany them (e.g. one mature adult to five young people) in order to do pilgrimage and prayer together. She says it is really interesting to hear what the youngsters say about the opportunity for devoting plenty of time to prayer and praying – e.g. one 19 year old said “the C of E should have a mandatory ten minutes silence in every service” – so it’s an opportunity to for us all to listen and learn!

SOME RESOURCES FOR ADVENT

Our thoughts turn to Bethlehem and the lands of the bible at this time of year. I would just like to share two images, two music clips, and two prayer links which focus on that area of the world.

The images: first, beautiful icons made during the summer for Lichfield Cathedral by three Palestinian students from Bethlehem Icon School with their director, referencing the Lichfield angel carving and an image from the Lichfield gospels, with a Palestinian twist: the Virgin Mary’s feet rest on a carpet of traditional embroidered motifs. I hope you get a chance to visit Lichfield to see them – students will return next year to make (‘write’) two more icons.

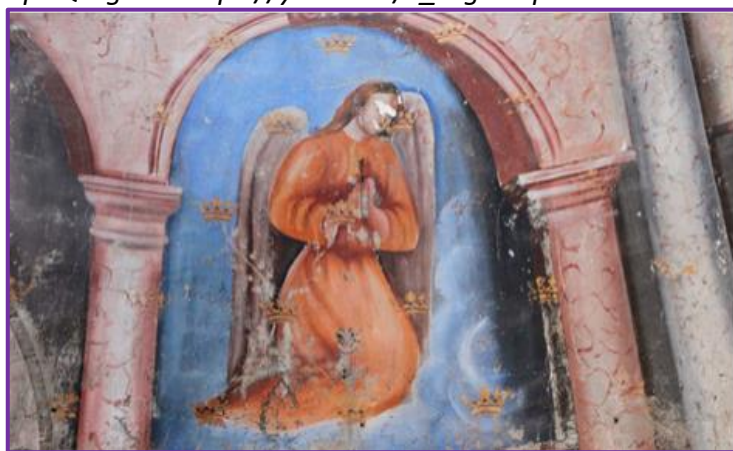
The second, a defaced angel wallpainting from a church in Aleppo, Syria. If you would like to listen to the Lord’s Prayer in Aramaic, still spoken in some Christian towns, try

<https://www.youtube.com/watch?v=ROM5EpCQUlg> or https://youtu.be/v_nlg3N3p9I .

And the links: a number of organisations share prayer and carol sheets – here are two:

Lutheran World Federation’s Prayer Vigil for Peace: <http://us2.campaign-archive1.com/?u=02a90f7edf8e62c16efbd919f&id=dc50442890&e=fdf6645536>

Embrace the Middle East (formerly Biblelands) prayers at: <http://www.embraceme.org/pray>.



http://www.catholicworldreport.com/Blog/5038/christian_voices_speak_from_aleppo.aspx#.V9lv-s3zqcl.facebook

And may we all enjoy peace and joy this Christmas!

Derby City Deanery Pilgrimage to Taizé
Sunday 27th - Wednesday 31st May



Coach from Derby departing pm on Saturday 26th May
Ferry crossing and overnight travel to Next Steps
Arrival at 9.00am Sunday 26th May (in time for the Eucharist)

Depart Wednesday 31st late afternoon
arrival in Derby Thursday 1st June, mid-morning

Provisional cost, inclusive of travel, meals and accommodation
15-24 years: £160; 25-29 years: £180
(camping or dormitory)

Over 30s

If you are 30+ Taizé welcomes you but would like you to bring under 30s with you, if possible.
own tent £220 or Taizé accommodation £230

Families

Parents calculated as above; Under 14s: £145

Next Steps:

Register your interest with Trudie Morris: revtrudie@gmail.com

Explore the Taizé website to learn more
about spending time with the community: taize.fr

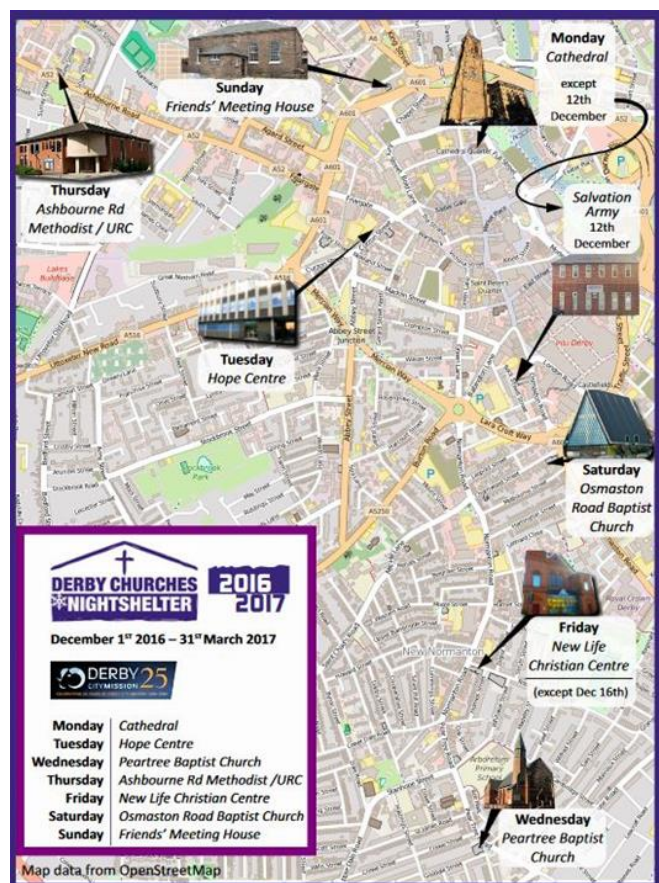
Talk about it in your parishes

Sponsor young people from your parish

Invite under 30s to be part of a Derby Pilgrimage Preparation Group

Parish profiles Z-A:

Rather than a parish profile this time, here is information about two ways to give practical help to people in dire need this winter – the Night Shelter and the specific useful items you can donate to Derby Refugee Advice Centre.



Derby City Mission: The Night Shelters

<http://www.derbycitymission.org.uk/#/projects/night-shelter>

Derby Churches Night Shelter started in winter 2013 in response to a severe cut in funding for homeless beds by Derby City Council. Working together to meet the urgent need for safe overnight accommodation for Derby's street homeless, seven church venues in or near the city centre each open one night per week in rotation, from 1st December to 31st March:

Sun: Friends Meeting House; Mon: Cathedral; Tue: Hope Centre; Wed: Peartree Baptist Church; Thu: Ashbourne Road Methodist and URC Church; Fri: New Life; Sat: Ozzy Road Baptist Church.

Volunteers provide a warm welcome and a substantial meal to 35 guests.

To get involved, contact, with your availability: nightshelter@derbycitymission.org.uk

List of items useful to Derby Refugee Advice Centre

Bosnia and Herzegovina Centre, 99 Curzon Street, Derby, DE1 1LN

Telephone - 01332 347497 Mobile 07412 986178 Email drac2@hotmail.co.uk

FOOD

Tins of tomatoes, chick peas, kidney beans, sweet corn, peas, mixed beans, borlotti beans (baked beans not popular); Tins of tuna, sardines, salmon; Tins of fruit
Rice and pasta, cooking oil, tea, long life milk, long life orange; Biscuits, chocolate

TOILETRIES

Toothpaste, shower gel, shampoo, razors, soap, washing powder, toilet paper, deodorant

KITCHEN EQUIPMENT: Saucepans, frying pans, woks

CLOTHES: IN VERY GOOD CONDITION PLEASE

Predominantly for young men, small or medium: Jeans, trousers, underwear (new if possible), shirts, T-shirts, jackets, sweaters, gloves, hats, scarves, trainers, shoes.

Also some general clothing for women, small/medium: Leggings, skirts, coats, jackets, tights, shoes, boots, underwear, scarves, jewellery.

Good quality children's clothing, all ages

BACKPACKS; SLEEPING BAGS, torches, flasks; **BEDDING:** pillows(new), sheets, pillow cases, quilts and covers... and **BICYCLES**

Deanery Diary:

Please share details of any events to which you would like to invite the wider Deanery, using the format below, to jo.simister@derby.anglican.org . Next deadline 5th January.

Fri 2 Dec 7.30pm	Derby Hospitals Choir Concert Annual concert for hospital beneficiaries. Accompanied by Derwent Brass with compère Charles Hanson.	Derby Cathedral DE1 3GP; Tickets are £15 from Foulds Music
Sat 3 Dec 10am-4pm	Christmas Tree Festival – part of our Christmas Tree Festival Weekend; illuminated trees. Refreshments on sale.	St John the Evangelist, Mill/Bridge Street, Derby. DE1 1DY. Free admission. Donations welcomed for Derby Children’s Contact Centre.
Sat 3 Dec 4-6pm	Messy Christmas – children please bring an adult!	St Barnabas, Radbourne St DE22 3HD; 01332 370035
Sat 3 Dec 7pm	Derby Concert Orchestra Countdown to Christmas Music to include Carmen, Beethoven, Abba, South Pacific.	Derby Cathedral DE1 3GP; Tickets from Foulds Music.
Sat 3 Dec 7.30pm	Christmas Tree Festival Concert – by Derventio Choir & Friends. Refreshments and raffle.	St John the Evangelist, Mill/Bridge Street, Derby. DE1 1DY. Tickets £6.00 available on the door.
Weds 7 Dec 11am- 12.30pm	Candlelight Vigil ‘Shine a Light on Gender Violence’ – part of the 16 Days of Activism against Gender Violence.	St Peter’s in the City, DE1 1SN
Sat 10 Dec 7pm	Messiah by Candlelight sung by Derby Cathedral Choir.	Derby Cathedral DE1 3GP tickets £20 centre nave, £15 side aisles/balcony) available from Derby Live.
Sat 17 Dec 7.30pm	A Concert for Christmas A feast of vocals and instrumentals. Directed by Cathryn Haywood Hollis.	St Michael's Willington £5 to include refreshments proceeds to St Michael's Church.
Sat 24 Dec 6.30pm	Candlelit Christmas Eve Carol Service	St John the Evangelist, Mill/Bridge Street, Derby. DE1 1DY.
Sun 25 Dec 10am	Christmas Day Family Eucharist	St John the Evangelist, Mill/Bridge Street, Derby. DE1 1DY.
Fri 6 Jan 7.30pm	Epiphany Choral Communion	St Matthew’s Darley Abbey DE22 1EY
Sat 14 Jan, 3pm and 7.30pm	Railway and Archive Films – 2 showings in the Fellowship Room; Doughnuts at the interval!	St Matthew’s Darley Abbey DE22 1EY Free (donations to Changing Faces); Rev P Barham 01332 551404.
Sat 14 Jan, 11am-1pm	Book Sale Refreshments available.	St Edmunds Church Hall, Kings Croft, Allestree DE22 2DU.