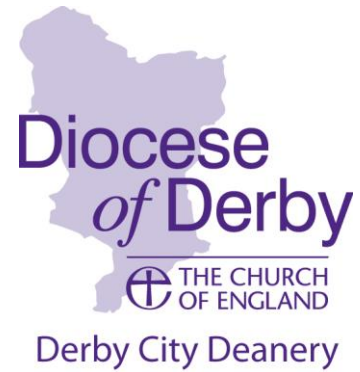


Derby City Deanery NEWSLETTER

September 2016 /#002



From the Area Dean: Revd Canon Dr Simon Taylor

Dear friends,

First of all a huge thank you to everyone who took part in the Launch Day on 24th September. It was great to see a huge range of different churches represented, all working together in mission. Thank you to everyone involved. Bishop Alastair was appreciative of the turnout for the launch service on the Saturday evening, so thank you to everyone.

Now the Deanery has been launched, we have to get on with the work of being a Deanery, working together in mission. Mission begins in prayer. On the next page in the newsletter, you will find a prayer list for the deanery. Let's use it as a way of praying for one another regularly.



Bishop Alastair Redfern, Area Dean Simon, and Revd Nick Gurney, (Vicar at St Mary's Boulton).

Mission happens at the level of the parish and at the level of the city. There is a lot already happening. This is a matter for celebration and sharing. So we will be looking at ways of doing that in Synod, in the newsletter and in other ways. There are opportunities coming along, such as the Community Led Support Programme that the City Council are developing. There are needs that we do not yet know about, or are not yet looking clearly at, and to which we will need to find ways of attending.

Let me end with a challenge. Let us try to have a plan for mission in the deanery that incorporates all of this, and more, in place by September 2017. It will never be a finished, static thing. But having an idea of what we are already doing, where we are going, and what the key needs are would be a really helpful thing. It needs all of us to do this, working together and looking prayerfully to discern where God is at work and what God is calling us to be and do in Derby.

With my prayers and all best wishes,



PRAYING FOR OUR DEANERY:

Day	Parish(es)		
		16	St Bartholomew, Derby and St Luke, Derby
1	St Edmund, Allenton and Shelton Lock; St Andrew with St Osmund, Derby	17	St John, Derby
2	St Edmund, Allestree and St Matthew, Darley Abbey	18	St Paul, Derby
3	St Nicholas Allestree, and St Paul, Quarndon	19	St Peter and Christ Church with Holy Trinity, Derby
4	St Michael and All Angels, Alvaston	20	All Saints, Findern and St Michael, Willington
5	St Andrew, Blagreaves	21	St Peter, Littleover and the Haven Christian Centre
6	St Mary, Boulton	22	St Francis, Mackworth
7	All Saints, Breadsall	23	All Saints and St John the Evangelist, Mickleover
8	St Mary, Chaddesden	24	St Giles, Normanton-by-Derby
9	St Philip, Chaddesden and St Mark, Derby	25	The Church on Oakwood
10	Derwent Oak (BMO)	26	St Stephen, Sinfen
11	St Peter, Chellaston	27	Sinfen Moor Church
12	Cathedral Church of All Saints, Derby and the Chapel of St Mary on the Bridge	28	St Werburgh, Spondon
13	St Alkmund and St Werburgh, Derby	29	Walbrook Epiphany Team Ministry
14	St Anne, Derby	30	Chaplains and Chaplaincies in the Deanery
15	St Barnabas, Derby	31	Officers of the Deanery and The Archdeacon of Derby, The Ven. Dr Christopher Cunliffe

From Assistant Area Dean Revd Trudie Morris**PILGRIMAGE OPPORTUNITIES:**

We will be talking about pilgrimage much more in the next newsletter (ready for Advent) but I thought it would be a good idea to get a few dates into diaries as soon as possible.

Deanery Taizé Pilgrimage as part of Thy Kingdom Come, which begins on Thurs 25th May. A Pilgrimage week usually begins in Taizé on a Sunday afternoon (so the 28th) and ends the following Sunday with the Eucharist. We would need to plan transport to the pilgrimage as well – a coach would probably work out as: Youth (14-24 yrs.) return: £115, Adult: £135. If we make this a family pilgrimage, we would plan for three nights – that would probably be Thursday or Friday to Sunday, or maybe from Sunday to Wednesday. We will need to book this by January.

“Hidden Treasure” — a young adult Taizé gathering will be held in Birmingham (UK), Friday 28 April - Monday 1 May, 2017.

Week of Prayer for Christian Unity in Jerusalem in January: Jo Simister invites you to accompany her – she will be going from Saturday 23 to Monday 30 January and will tell us more in the next issue.

From Deanery Administrator Jo Simister (jo.simister@derby.anglican.org)

ANNOUNCEMENT OF DEANERY OFFICERS:

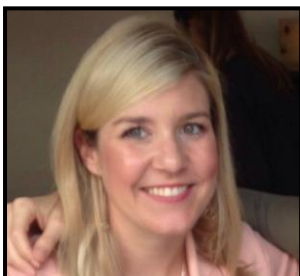
At the Deanery Synod on 13th September, the following were appointed to serve Derby City Deanery (and brief information about the Lay and Clergy representatives will follow next time):



Chair: Mrs Madelaine Goddard:

A member of the Bishop's Council for some years & also representing it on the Business Committee; previously a Lay Representative on the General Synod & on its Fees Advisory Commission; for six years Diocesan Mothers Union President and also on its national Finance & Administrative committee and I am still a Diocesan Trustee of the organisation. Also trustee of a small national charity which benefits vulnerable women & children.

Worked in the NHS, industry & education.



Treasurer: Mrs Kathryn Hicks:

Born and raised in Oklahoma in the Episcopal church, studied abroad in both Scotland and then Austria and spent the next 11 years working as an auditor and accountant whilst enjoying life in that beautiful city. Came to the UK three and a half years ago, currently working as an ACCA qualified Finance Manager at a tier 1 airplane parts supplier in Derby and thrilled to contribute this "talent" or knowledge to the Deanery.



Secretary: Peter Vincent

Retired Chartered Engineer, worked in the railway industry. Became involved in Church Administration at University, and served on a number of Parochial Church Councils and Synods in various Dioceses, as Assistant Secretary and then Secretary of Darlington Deanery Synod, and has been the Lay Chairman of the Derby South Deanery Synod for twenty years.

Also served on the Diocesan Synod and represented the Derby Archdeaconry on the Bishop's Council and Standing Committee.

DEANERY CONTACTS DATABASE:

Thank you to those parishes which have notified up-to-date contact details for clergy, synod reps, PCC secretaries and treasurers, wardens and safeguarding links – and anyone else that I might need to correspond with! This information is just for Deanery use, to facilitate smooth communications. Please continue to send me your contact details at jo.simister@derby.anglican.org.

Quite a lot of the details I have been given are different from those held on the Diocesan list, so I would encourage you to check the details on the database and change them yourselves, or notify Rachel Shock, who is the only 'third person' allowed to meddle with the database. (You can contact Rachel at Rachel.Shock@derby.anglican.org.)

TALKING ABOUT CHRISTIANS IN THE MIDDLE EAST:

Just a note that with my Living Stones of the Holy Land Trust hat on, I am very happy to come and talk about my experiences visiting Palestine/Israel and Syria – that might be something interesting for your Advent programme? (More in the next newsletter – and in 'Pilgrimages' on the next page).

News from around Derby City Deanery

DEANERY LAUNCH AT ST MARY'S BOULTON on 24th September 2016



Snap from a most enjoyable day: family activities in the park and community centre, hymns in the pub.

COMMUNITY LED SUPPORT: Update

In the last issue of the Newsletter, we reported on Derby City Council's proposal for a Community Led Support Programme, which we regard as 'A Mission Opportunity for Derby City Deanery'.

The scheme began with a pilot at Alvaston Library, and there's an extract from the story of one customer which we have been given permission to use, Michelle, below.

A new Talking Point hub will start at St Edmund's Allenton and Shelton Lock on Wednesday 19th October and each Wednesday from 10.00-12.00pm.

**Michelle meets
Alvaston Talking
Points:**

Michelle was recently discharged from hospital following a short illness. Her health deteriorated whilst back at home which resulted in a number of falls and visits from paramedics.

During the conversation at Talking Points, Michelle explained to the social care worker that she didn't want another standard care package as she really valued her own independence and did not wish to receive support from paid carers.

Michelle talked about her faith quite a lot during the conversation and explained that due to her decline in health, she could no longer attend church or receive regular Holy Communion.

The social care worker also lived in the same community as Michelle and had connections with the local church. She spoke to the local priest and arranged for him to visit Michelle at home so she could receive Holy Communion and once again feel part of the church community.



MEMORIAL SERVICE - Sunday 30th October at 6.30 pm

We are having a memorial service at St Barnabas to which we invite family and friends who would like to remember someone. The service will have familiar hymns and provide an opportunity for each person to light a candle and place it in a cross in remembrance of a loved one who has died. Their names will also be read out and the whole service will last about an hour. Tea, coffee, biscuits and cakes will follow this for those who wish to stay.

If you would like to join us and have your loved one's name(s) read out, please contact the church office on (01332) 370035, or email us at office@stbd.org.uk or write to us: St Barnabas Church, Radbourne Street, DE22 3HD. We will need the names of those who you would like to remember and also your name please. You need to provide us with this information **no later than Monday 17th October.**



DO YOU HAVE A CRIB TO LEND ST EDMUND'S ALLESTREE?

St Edmund's Allestree has a German Christmas Market planned for Saturday 12 November - lots of exciting stalls in the Church Hall.

We would like to put something in the church so there is more to the market than just things to buy, and thought a display of Christmas Cribs would be a good idea. They are easy to get out and to put away the same evening (in time for Remembrance Sunday). If your church has a crib set we could borrow, that would be marvellous. Peter Barham will come and collect it from you sometime at the beginning of November, look after it, and bring it back sometime the following week (or at least in time for Christmas).

If you can help, please could you email Peter on revpeterbarham@btinternet.com with some idea of the size. We will, of course, take care of them and ensure they are insured. *Thanks!*

Parish profiles Z-A: Sinfin Moor Church

- Arlestone Lane, Sinfin, Derby DE24 3DH
- The Revd Susan McIvor (Methodist Minister)

Thanks to Ian Sant of Sinfin Moor for this article and photo.

www.sinfinmoorchurch.org.uk

<https://www.facebook.com/SinfinMoorChurch/?ref=hl>



In the mid-1960's a new housing development was planned in south west Derby called Sinfin and rather than each denomination providing a Church, it was decided to create one Church. So, Sinfin Moor Church was created as a Local Ecumenical Partnership (LEP) between the Anglican, Methodist and United Reformed Churches which has been established here since 1970. In its Anglican capacity it is the Parish Church of Sinfin Moor, in its Methodist capacity it is the Local Methodist Church and in its URC capacity it is the Local UR Church. Our Parish is partly in the City of Derby and partly in South Derby which puts us right on the edge of the City and with minutes of being in the countryside.

We are now in a Ministry and Mission Area with St Stephens Parish, we are of course part of the Derby Diocese in the Derby Deanery; we are part of the Derby Methodist Circuit and we are in the URC East Midlands Province and part of the South Derbyshire Association of United Reformed Churches.

We believe we were the first single congregation_LEP in Derbyshire which makes us one of the first LEP's to be created the UK as a new Church rather than bringing two or more churches together. There are now four LEP in Derby, The Church on Oakwood (Anglican, Methodist and URC), Haven (Anglican, Methodist, Baptist and URC), Ashbourne Road (Methodist/URC) and ourselves.

The church operates as a single united congregation encompassing all 3 partner denominations. This means that we all worship together as a single church with services taking place every Sunday Morning at 10.00 am.

We began life as a house church meeting at the then minister's house. We progressed to an initial building which was a pair of semi-detached houses built with no middle walls. It was opposite where the Vicarage is now and was a bit strange to worship there but it served us well until we moved into our present building in 1975.



Our Church building is built so as to be multi-purpose. It has 3 large bays, the front bay is the sanctuary, the middle bay is carpeted and used for larger gatherings and the Back Bay has 'hard' floor and is used by uniformed groups, dancers etc. Each bay has sliding screens which can be opened in any combination allowing 2 or even 3 bays to be opened for very large gatherings. There is an Activity Room, Coffee Bar and kitchen so the facilities are quite extensive.

The building gets a good deal of use both by the Church and also outside organisations which gives us a steady

income to supplement our normal income from the Sunday offering. The last time we calculated the average weekly footfall (the number of people that use the building each week) was estimated to be in excess of 600.

In 2014, thanks to Derby Homes and Derby College, as part of their Apprentice Week, parts of the building were decorated, the kitchen was refurbished and some new windows installed along with the conversion of a room into a mower store. Following that in 2015, we had our toilets refurbished to bring them up to modern standards. Currently we have major work being carried out with a complete new roof and what was a Meeting Room being changed in to modern glass fronted Foyer (or Narthex) to make a more welcoming appearance so that people can see what they are coming in to. This is costing just over £180,000 and with the exception of one grant from the Derby Methodist Circuit, the project is being entirely funded by the Church congregation as grants were not forthcoming or the process too long-winded to meet our timescale. This will result in the Church have a debt of about £40,000 which will need repaying over the next 5 or 6 years. We have gone forward with this project because it needs doing and as a commitment of faith because it is our belief that this is what God wants us to do.

The strange thing is that since it came in to being in 1970 until 2006, we had never had a formal constitution. There are some words in the Sharing Agreement that give guidance; there was draft constitution but never a formal one.

It was in 2006 that the Church Council decided that this was not a satisfactory situation and so a group were appointed to produce a constitution which kept the principles of the conception of the Church but reflected the situation as it had evolved and the progress made as an ecumenical church. For those of us that have been here many years, it is safe to say that progress has actually been significant and values of ecumenism embraced and developed.

The group met in this front bay, making use of our computer and more importantly the multi-media projector to thrash out the detail. As you can imagine, some parts were easy, some not so easy but some parts were difficult but our group persevered and a final draft was produced.

Due process took place involving all interested parties and finally we were in a position to seek approval from the sponsoring denominations, the Church of England, the Methodist Church and the United Reformed Church as well as Churches Together for Derbyshire (the formal sponsors). It has been tweaked a number of times since it was written.

Of course a number of amendments have had to be included but it is pleasing to be able to report that probably 99% of it has remained intact and reflects where we are today.

Ministry is now provided by one of the denominations at a time but this has not always been the case. In 1970 the Minister was a full time Anglican with part-time support from Methodist and URC Ministers. Since then we have had various arrangements in place but Ministry is now provided by one denomination at a time. This should rotate between the three denominations but in truth, Ministry is provided by whichever denomination can actually provide someone. Today we have a Methodist Minister, Rev'd Susan McIvor, she serves us 'half-time' and the other half of her time is as the Nottingham and Derby District Safeguarding Officer for the Methodist Church.

The Church is an Anglican building and our Minister's accommodation is a Vicarage also provided by the Church of England. Our Assessment is produced by the Diocese and then divided between the 3 sponsoring denominations to a formula produced by Churches Together for Derbyshire.

Membership of the Church is done by Confirmation/Receipt in to Membership but as you may guess it is not as simple as that. A person who is confirmed at SMC is a joint member and therefore

a member of all 3 sponsoring denominations. A person who transfers their membership is not a joint member but in essence, we are all treated the same.

At our Annual General Meeting (AGM) we elect 6 Stewards who serve on the Joint Church Council along with 6 elected Council members, the Church Secretary and Church Treasurer. Back in the beginning, this was a lot more complicated in-as-much that we had to elect 2 Church Wardens, 2 Methodist Stewards and 2 URC Elders and at the AGM we had to split to have 3 separate meetings to elect them! Nowadays it is much simpler as the working and operational arrangements have developed.

There are some advantages being an LEP e.g. having 3 denominations to turn to for help and guidance; there are disadvantages too, e.g. having to find representatives for 3 lots of meeting where a single denomination Church only has to find one set of representatives.

Overall, being part of an LEP is a voyage of discovery and working together and I think we are making a great success of it. We are a single congregation, worshipping together and most folk in the Church are not really aware of which denomination they are or were.

Take a look at our website www.sinfinmoorchurch.org.uk to see more of what goes on here.

Under the guidance of a Minister and Stewards we are developing strategies to take us forward and hopefully grow in numbers and if I may, I will leave you with our Mission Statement which says:

“We are a Christian Fellowship (including Anglican, Methodist and United Reformed ministries) committed to serving God and sharing the Good News of Jesus with everyone.”

Dates for your diary:

*Please share details of any events to which you would like to invite the wider Deanery.
See panel below for next deadline.*

Wed 19 Oct 10am-12noon	<u>Talking Point</u> – and every week – please see article on page 5	St Edmund's Allenton and Shelton Lock, DE24 9JA
Sun 30 Oct	<u>Memorial Service</u> – please see article on page 5	St Barnabas Church, Radbourne Street, DE22 3HD
Sat 12 Nov Time tbc	<u>German Market</u> – please see article on page 5	St Edmund's Allestree, DE22 2FN
Weds 16 Nov 7 for 7.30pm	<u>Deanery Synod</u>	St Bartholomew's Church Hall. Addison Rd, off Nightingale Rd, DE24 8FH
Weds 7 Dec 11am-12.30pm	<u>16 Days of Activism against Gender Violence</u> – a vigil	St Peter's in the City, DE1 1SN

Deadline for the next issue: 5th November, 2016, to jo.simister@derby.anglican.org

Issue no 003 will focus on Advent resources and Pilgrimage opportunities, and should be available for collection at Deanery Synod on 16th November.

Issue no 004 will be available late January, and will look at modern-day slavery, and also Derby's support for refugees and asylum seekers. Deadline will probably be 6th January.