

COMING

ST. WERBURGH'S
DERBY

**BISHOP'S MISSION
ORDER PROFILE 2023**

WHO ARE WE?

St Werburgh's Derby is a vibrant city centre resource church that planted from Holy Trinity Brompton in September 2017.

In the six years since we planted, St Werburgh's has been on an incredible journey of faith that has seen us grow quickly, enabling us to plant to St Francis Mackworth in July 2020 and to St Edmund Allenton and Shelton Lock in 2023. We are seeking a curate who would be interested in becoming part of St Werburgh's Church team, who is willing to take an active role in building up and caring for our church family with a view to leading a future church plant in the area.

We have thriving children's, youth and student ministries. Our pastoral care structure is primarily through termly small groups we call our "Werb's Communities". We run several Alpha courses every year, with more 30 - 40 guests each term. We connect with asylum seekers and outreach to the many refugees living at the Initial Accommodation nearby. There are plenty of different areas to get involved in, to build further experience supervising and to enjoy supporting in a variety of ways!



OUR VISION

Our vision is to build an authentic community, which is Christ-centred, that plays its part in transforming the city and beyond.



Friendly & Welcoming

Focused on prayer, community, discipleship and mission

Filled with young people, students & families

A church plant that plants churches & develops leaders

Word & Spirit
Disciples making disciples.

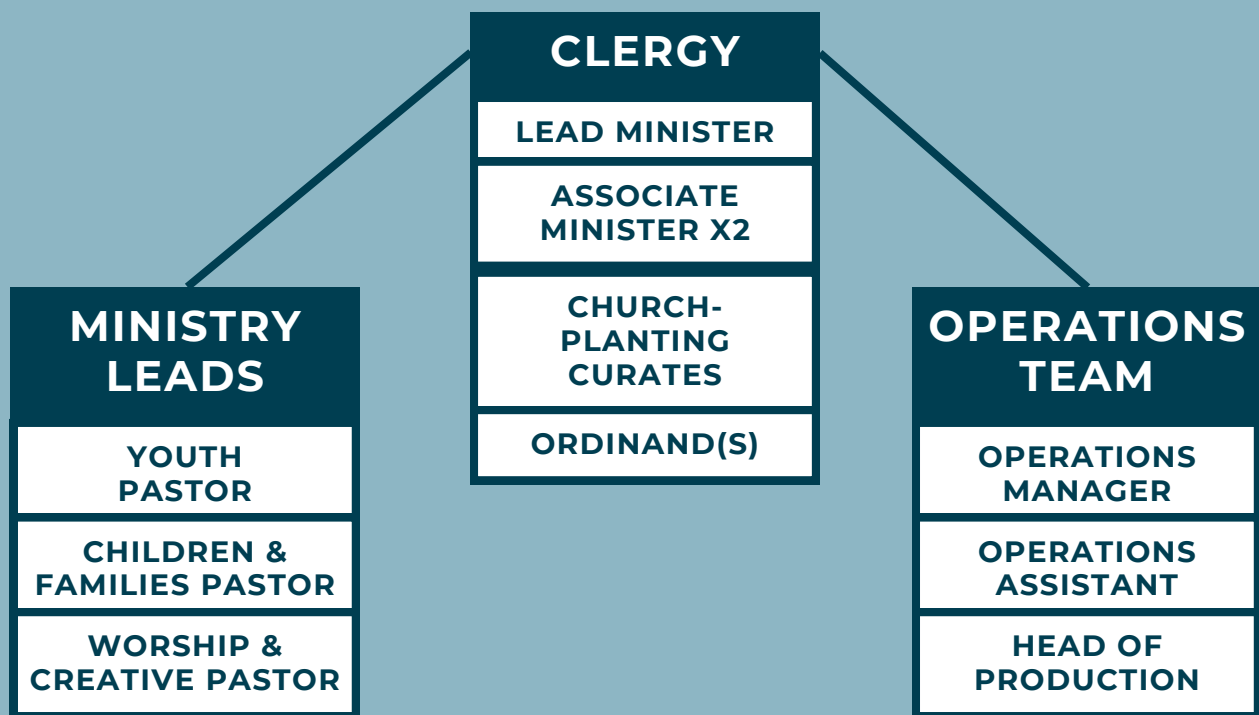
Generous & good news for the city.



TEAM STRUCTURE

WELCOME
HOME

St Werburgh's is currently blessed with a staff team of ten people; Lead Minister, Associate Minister, a curate, an ordinand, three ministry area pastors (Children, Youth, Worship & Creative), a production manager and two operations team members (Operations Manager and Assistant).



We also have Werb's Central, just down the street from the church. The building is being developed in order to expand our mission and ministry in the city centre. The staff office is also located here.



THE CITY OF DERBY

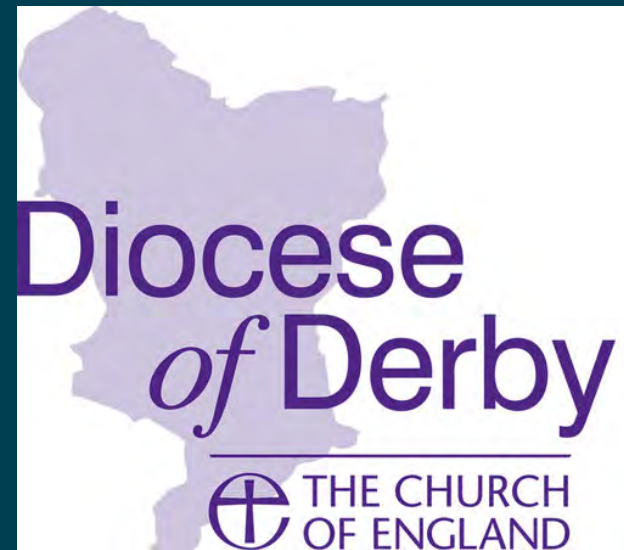
St Werburgh's Church is within the Diocese of Derby, with a Bishop's Mission Order to operate across the whole city.

St Werburgh's is also part of Derby City Vision, which is a city wide collaboration of evangelical churches that work together to serve our city in a variety of ways.
<https://www.derbycityvision.org/>

Derby is a city of over 250,000 people located right in the centre of England with good transport links to the rest of the UK and Europe. Derby is a city built on engineering: in 1721 it had the first factory anywhere in the world! Today, three of the main employers are Rolls Royce, Toyota and Alstom (formerly Bombardier).

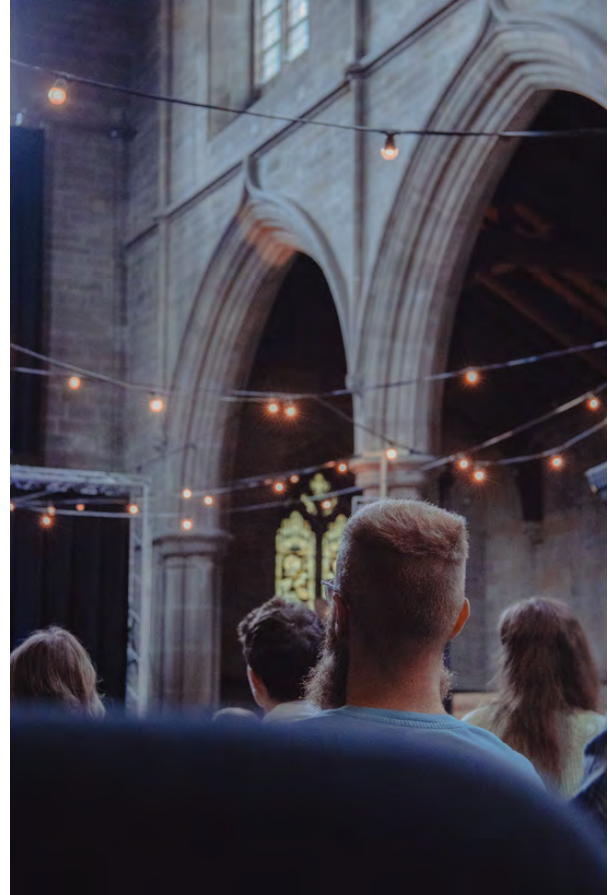
The Royal School for the Deaf is just down the road from St Werburgh's, and Derby has the second largest Deaf community in the UK. The city is also a City of Sanctuary, committed to the warm welcome of Refugees and Asylum Seekers in the city.

Derby is in the south of the county of Derbyshire and is only 20 mins away from the stunningly beautiful Peak District.



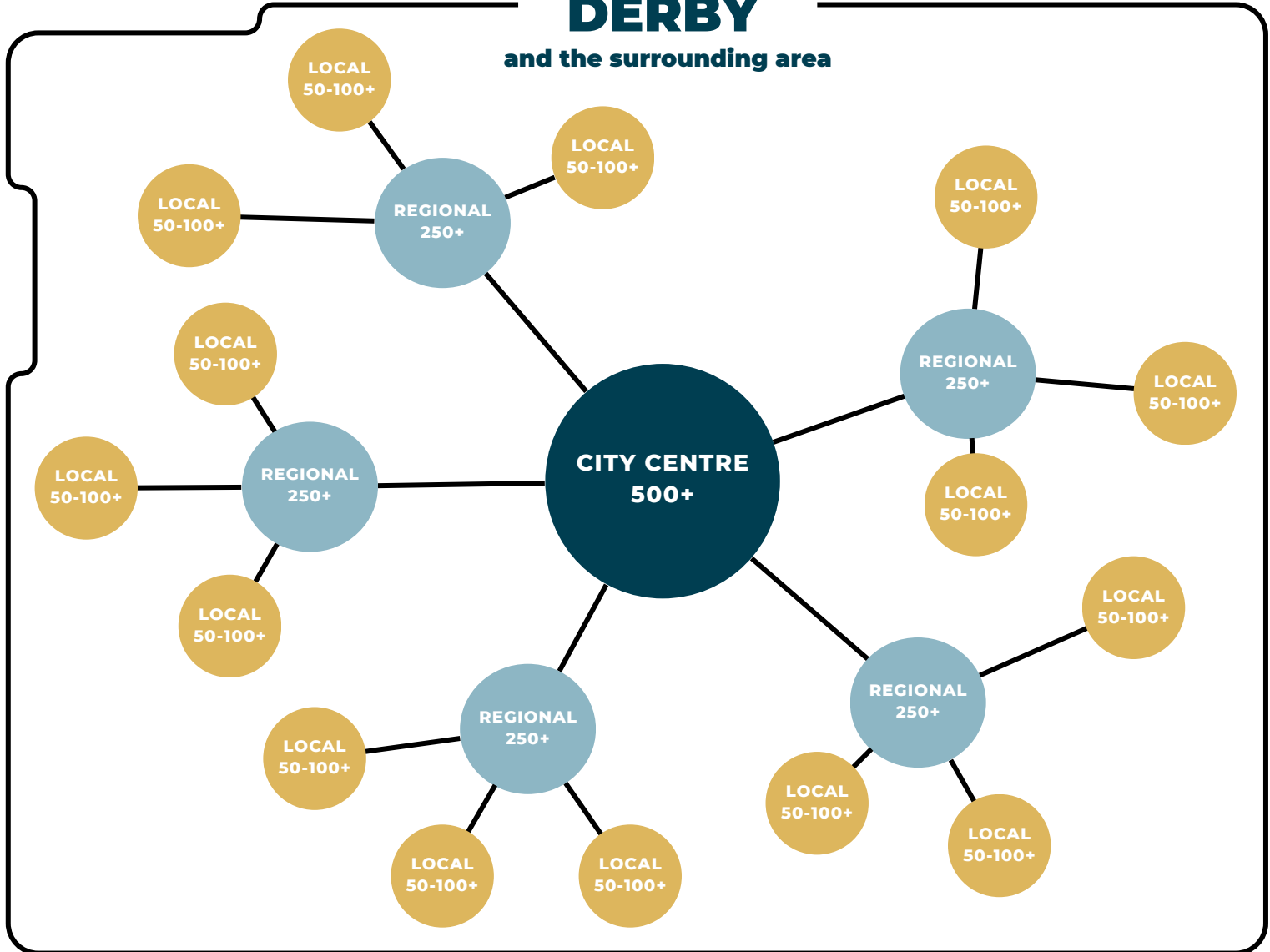
CHURCH-PLANTING STRATEGY

St Werburgh's is situated in the city centre, surrounded by pubs, clubs, coffee shops and student accommodation. Derby is made up of distinct communities and estates surrounding the city centre. At the moment our St Werburgh's church members gather from across the city. We are working towards a model of planting churches that plant churches, so that we can continue to reach people across the whole city of Derby.



DERBY

and the surrounding area



We are looking for a curate to help us grow our church:

- to assist with pastoral care for members of our church community,
- to help steer the direction of our church and build a community that can help compassionately serve as part of our incredible city.



St. Francis Mackworth

Our first church plant / revitalisation was to St Francis Mackworth, an estate in west Derby. There were 15 people at St Francis and we sent 40 from St Werburgh's. Three years later there are about 160 people now part of the church community at St Francis.



St. Edmunds Allenton & Shelton Lock

We have just sent 40 people to St Edmund's Allenton and Shelton Lock to revitalise their congregation of 8. There is currently a community of 50+ at St Edmund Allenton and Shelton Lock



We are now rebuilding with a view to plant again in the next few years. The incoming curate will lead one of these future church plants.

RESOURCING DERBY PROJECT



St Werburgh's was planted with the two main aims of the Resourcing Derby project in mind:

- To plant out across the city and help turn around the decline in church congregations, and
- To reach young people and grow young disciples in the city of Derby

As part of the project, we were set some stretch goals for our first 7 years including:



Grow to a church of 500 people



50% under 25 years of age



50% de-churched or unchurched



2 churches planted



We are focused on church planting and on mission and discipleship with younger generations. We are currently around 300 people in person at Werb's every Sunday.

There are also a number of people choosing to connect with us online via our livestreamed services and social media outreach.

LEAD MINISTER



Phil Mann is our Lead Minister at St Werburgh's Church, and Priest-in-Charge of our church plants.

He is a member of the Gregory Centre for Church Multiplication.

"I was ordained in 2008 as a pioneer minister and have spent over 20 years in ministry in Guildford, Gerrards Cross and Holy Trinity Brompton before leading the team at St Werburgh's Derby for the last four years."

TRAINING Minister

Jenny Simpson is the Associate Minister at St. Werburgh's Derby. She is also the Training Minister.

"I was ordained in 2019 and have been in church leadership for 22 years across a number of churches including St. Andrew's Chorleywood and Holy Trinity Brompton. My heart is to equip and empower others in their calling. I love to see people flourishing in what God has given them."



CONTACT US

Thank you for your interest and for reading this profile. If you'd like to find out more, please do feel free to contact us. You can also see previously live-streamed services on our Youtube and get a feel for our community on our social media platforms.

hello@stwderby.org

www.stwderby.org

St.Werburgh's Church
Friar Gate
Derby
DE1 1BU



St.Werburgh's Derby



STWDERBY



STWDERBY



The Diocesan Vision Summary

Vision statement

The Kingdom of God: good news for all

Mission statement

To proclaim afresh in this generation the good news of the Kingdom

Our values

Generous Faith
Courageous Hope
Life-Giving Love

Missional aims

Transformed Lives
Growing Church
Building Community

Diocesan interventions

Equipping people for mission
Shaping structures for mission
Sustaining resources for mission



Transformed Lives | Growing Church | Building Community
THE KINGDOM OF GOD - GOOD NEWS FOR ALL

If you would be interested in exploring this post further, please contact:

The Revd Ben Griffiths
ben.griffiths@derby.anglican.org
01332 388693

The Revd Dwayne Engh
dwayne.engh@derby.anglican.org
07425 60421