



All Saints, South Wingfield



St Mary's, Crich

Parish Profile

One Benefice, two Churches

**Diocese
of Derby**



Transformed Lives | Growing Church | Building Community
THE KINGDOM OF GOD - GOOD NEWS FOR ALL



CONTENTS

Welcome from Archdeacon

Our Benefice

Who we are looking for

What we can offer

St Mary's Parish and Church

All Saints Parish and Church

Conclusions

Vicarage

Contact us

Welcome to the Parish Profile for the United Benefice of Crich and South Wingfield and thank you for taking the time to read this profile.

This is a part-time (Sunday plus 3 days) stipendiary post that is full of potential and presents a genuine opportunity to grow the church and build community, developing sustainable ministry across 2 rural villages on the west side of the Archdeaconry of East Derbyshire.

The congregations are praying for someone who can lead them in Mission Action Planning as they look for fresh vision and impetus, based around and flowing out of the Diocesan vision: The Kingdom of God, good news for all. They are willing to change and have lots of ideas!

Each Parish has its own character and they both acknowledge that there is more that could be done together, releasing time and energy for mission. There are 3 Church schools within the Benefice and 2 other schools that could be drawn into a developing schools' team, with the possibility of working ecumenically as well.

There is also much to be gained in building closer working partnership and relationship with neighbouring parishes in the Deanery, with a view to developing a functioning and cohesive rural hub in the future and this needs to be a focus of the role.

There is much to commend this post, especially if you are someone with a heart for Kingdom ministry in a rural setting. It will require the ability to pace yourself – there is much that could be done and a real sense of excitement and anticipation, so setting priorities in ministry and mission and working together at a suitable pace in this part-time role will be vital.

If you sense something of God's calling, it might be helpful for you to have a conversation with me and I would welcome that opportunity, so please do be in touch.

In hopeful anticipation,

Ven. Karen Hamblin

Archdeacon of East Derbyshire
01332 388699 07496 823404
karen.hamblin@derby.anglican.org

The United Benefice of Crich and South Wingfield
was formed in 1998 and comprises two distinct parishes and
churches, each with its own mission and community.

**Our Vision for the Benefice is to deepen our
involvement with our communities, share our faith
and grow our church.**

The area lies at the edge of Derbyshire's Peak district and
attracts many walkers, cyclists and tourists. The nearby M1
and A38, as well as several railway stations, make commuting
to Sheffield, Nottingham, Derby and Chesterfield viable
options for work as well as culture, sport, and entertainment.

St Mary's is part of a thriving community with many
opportunities to share the good news of Jesus and make
new disciples. Our PCC and congregation are
enthusiastic about growing our Church!

We are excited to move forward and are open to new ideas,
keen to learn about new ways of 'being church'.

All Saints can see lots of opportunities to grow the
church, support the community as we seek to know
Jesus and celebrate our faith.

Our new Parish Priest

We are seeking a priest who:

- *Is deeply prayerful with a passion to nurture the faith of all ages.*
- *Has a passion for the Bible and the ability to communicate, teach and inspire others to grow in their faith.*
- *Is pastorally minded with a heart for the needs of our community, congregation and benefice.*
- *Is enthusiastic about exploring new ways of worshipping, relevant to the community we live in.*
- *Has a genuine desire to work collaboratively with compassion and sensitivity.*
- *Is keen to develop our work with children, young people and families, strengthening our existing relationships between church and school.*

What we can offer:

- The opportunity to set a new path on our journey of faith, starting a new phase and to make a real difference at a significant time for our church and community.
- An enthusiastic and supportive team of lay volunteers with a wide range of skills.
- There is a small amount of paid administrative support in the benefice.
- A comfortable and modern 4-bedroom vicarage with a study and easily manageable garden, located in Crich.
- Two leadership teams who will give you prayerful support and encouragement and are ready to work alongside you with your ministry.
- Honouring the part-time nature of the post: Sunday plus three days and recognising the need for time for personal prayer and retreat.
- Encourage you to take your full holiday entitlement.
- Pay your expenses promptly.
- Expect you to seek and take further training as part of your personal and spiritual development.

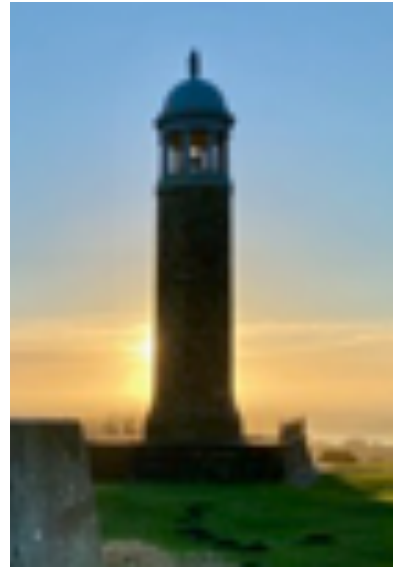
Working together across the Benefice

Inter-parish events, such as combined services on the 5th Sunday with alternating venues, Maunday Thursday service and Harvest suppers have enabled us to worship and enjoy fellowship together. These combined events have been in obedience since Covid and through our period of vacancy.

We are blessed by the leadership of lay readers and retired clergy and with the help of a new priest, we believe the time is ripe for us to regain our momentum, to develop new initiatives and to move to an exciting new phase in the life of our benefice.



St Mary's



Crich Stand

St Mary's Parish and Church

<https://www.achurchnearyou.com/church/13152/>

As a traveller approaches our Parish from any direction, two towers can be seen on the hilltop from many miles around. One is Crich Stand – the Memorial Tower dedicated to the Sherwood Foresters (now the Mercians). It is a National Beacon point and the Crich Fire Service team lights the Beacon for all national celebrations– **a symbol of light!** The other tower on the horizon is the spire of St Mary's Church housing the 8 bells that have rung out celebratory good news over many years. – **a symbol of life.** Two towers for Light and life! Our hope for all the people who live in our Parish is that they will encounter the Light and Life of Christ for themselves as we continue to share the Good News of God's Kingdom with our growing Community.

One resident, whose family has lived in Crich for generations recently described the church as **“providing a sense of belonging within the community, being a comfort, a link to past generations. It's a place where people can go to in a crisis and have space, quiet, the opportunity to reflect and feel safe.”**

Opportunities

A Parish full of possibilities, including:

- Ongoing housing developments have led to a sharp increase in the local population. We would love to establish new links to encourage, welcome and nurture our new neighbours.
- We're proud to have 3 Church schools in our parish. In addition Crich Junior school, though not a church school, encourages faith through regular links with the Baptist Chapel.

- The Glebe Field Centre, village community hall, has more potential for Church use. St Mary's has free access to a room 2 evenings and 1 afternoon weekly.
- We'd love to revive events and services like Alpha, Easter worship at Crich Stand, Quiet days, Celtic services, alternative worship, more home groups and Parish Away days, which all proved rewarding in the past.

Challenges

We recognise the following challenges:

- The need for leadership and encouragement after lengthy periods without a priest in charge.
- Help us to learn new ways to connect with people as we continue to meet changes in behaviour post-covid.
- We have insufficient foundation governors for all three of our church schools.
- How do we engage with people who are busy with work commitments and may not use existing church groups, facilities or other community initiatives?
- How do we successfully resource the events and activities that we wish to offer?
- What changes could we implement which provide opportunities to improve the way we use our listed church building?
- How do we make our church more sustainable and energy efficient?

Worship

<i>Average attendance at normal services in 2023</i>		Adults	Children
1st Sunday	All age worship	43	4
3rd Sunday	Morning Prayer	35	
2nd & 4th Sundays	Holy Communion	41	

Pre Pandemic, we held evening services which enabled us to enjoy other styles of worship including Celtic, BCP, non-liturgical worship with a band and folk services. We regularly had Mother's Union, Church days and Quiet days away. We look forward to exploring other such forms of worship.

St. Mary's comes from an Evangelical tradition whilst recognising the diverse spiritual needs and experiences of our community. Currently, both Holy Communion and Morning Prayer are based on Common Worship using our own booklets, printed service sheets or PowerPoint and we use Mission Praise. The choir contributes at Sunday services, supporting the singing and bringing occasional anthems.

Service Leaders

Our services are led by a small team. This was once the Ministry team with a wider brief but has become a small group planning the coming services. This group consists of two Readers, one Churchwarden and one lay person all of whom take part in leading Morning Worship and All Age services. We welcome our Archdeacon and clergy from the Diocese to lead services of Holy Communion in our vacancy. We currently have 3 people who lead funerals.

Home Groups & Meetings

A prayer meeting takes place every Saturday morning.

At present we have two home groups. Poema is a women's group which meets for Bible study and discussion and is valued for the support received from each other in juggling home, family and work. A second Home-group meets monthly for bible study.

Sharing and discussion is always interesting and honest in both of these groups.



Poema

Life events

Our church is well used for Baptisms, Weddings, and Funerals. We hold a memorial service each year to which those who have had funerals for family in the previous three years are specially invited.

We were delighted to welcome Bishop Malcolm to our church in November 2022 to conduct a confirmation service along with the baptism of an adult and child.





Mission

Mission takes place both within our church building and beyond.

Mission at church

Our seasonal services are an important part of our mission as they are times when we can share the good news of Christ in a welcoming environment.

Seasonal services - our average attendance

	Adults	Children
Christingle	50	30
Carol Service	140	
Crib Service	40	25
Christmas Eve Communion	30	1
Christmas Day	43	6
Good Friday Family crafts & worship	50	37
Easter Day	63	4

Attendance figures for last 12 months



Good Friday activity service

Each Good Friday we host a joyful family activity morning followed by hot cross buns and All Age worship.

Our lively Christingle service takes place at the beginning of Advent and marks the beginning of the Christmas season for many families. The Carol Service is an opportunity for our community to gather & involve people who play a part in the local community.

Lockdown did not stop our seasonal outreach; we had Easter and Christmas displays around the village in windows, gardens and garages accompanied by booklets and craft activity packs. These were enthusiastically embraced by the community.

Our choir hold occasional coffee mornings at church which welcome people into our church building with opportunities for delicious cake and friendly conversation.



Crich Infants at St Mary's

Mission with our Schools

There are three church schools in the parish of Crich; two being Voluntary Controlled and one being Voluntary Aided.



Crich Infants School

www.crich-inf.derbyshire.sch.uk



Crich Carr Primary School

www.crichcarrprimary.co.uk

Fritchley C.E. Aided
Primary School



Fritchley Primary School

www.fritchley.derbyshire.sch.uk



Crich Junior School

www.crich-jun.derbyshire.sch.uk

Schools in St Mary's Parish

	Age range	Headteacher	Children	Pupil premium
Crich C of E Infants School (Controlled)	4 - 7	Julie Kirk	59	17
Fritchley C of E Primary and Nursery School (Aided)	3 - 11	Rosie Turner	92	24
Crich Carr C of E Primary School (Controlled)	3 - 11	Ian Robson	63	5
Crich Junior School (State)	7 - 11	Chris Orridge	74	24

The head teachers are very keen to have a vicar who relates well to the children. Rosie Turner Head at Fritchley writes;

“We would welcome frequent visits by a vicar, planned and not planned, to come and talk and share with the children whether this be in worship, the classroom, playtime or come and have their lunch with the children. At Fritchley, we enjoy active worships that are fun and give the children space and time to reflect.

Someone who would embrace this would be fantastic.”

We have close connections with our village church schools and welcome them to our church for their Christmas and Easter services, along with their families and friends.

We are also warmly welcomed at all three church schools where a small team from St. Mary’s lead collective worship at times.

We are aware of the limited numbers of our congregation offering themselves as foundation governors. This is especially evident with the demands of having three church schools.

A priest coming to our benefice would need to have a keen interest and have a real heart for growing the relationships already established.

Mission in our community

We are keen to take mission out into our community rather than expecting the community to always come to us. Church members are involved in most village activities, including Scouts, the luncheon group for the elderly, Live and Local entertainment, Well Dressing, Open Gardens, Muddle-along and Music Therapy sessions.

A community youth club (for 11-16s) was established in 2021 to help young people, many of whom had become vulnerable during Covid, to rebuild their friendships, confidence and social skills. This is also supported by volunteers from St Mary’s.



At our Village Fete a group from St. Mary’s, helped by Youth Club members, runs the tea tent which raises money for CHIKS (See Wider Mission) and the Youth Club.

Such participation means that for many the church is integrated into the community. So, Christian values are widely witnessed and one non-Church member remarked of a particular church member that:

“to me he is what Christians are supposed to be like”

Working and worshipping with other Churches

St Mary's, along with the Baptist church, organises the annual Carols- around-the-tree in the week leading up to Christmas; the most recent one drawing some 400 people. Our retained Fire Service drives their fire- engine into the Market place and children are invited into the fire-engine to meet the 'special visitor' – great fun!



The Wesleyan chapel provides a warm and welcoming environment for Popalong, a group for babies, toddlers and their carers which is run jointly by the chapel and St. Mary's. All those graduating from Popalong are presented with a Children's Bible. Many of the families who attend, or have attended, this group join us at our special seasonal services and it has been rewarding to see children who started out at Popalong now attending the village youth club. Families with babies, some new to the village, have found Popalong the source of forming enduring friendships, as well as an opportunity to relax and be cared for.

Some 15-20 parents and children attend a monthly Café church which is also held at the Wesleyan church and run by members of both the chapel and St Mary's. Members of St Mary's and the Wesleyan Church meet together weekly for prayer and monthly for healing prayer.

Wider Mission



CHIKS

St. Mary's is a church which gives generously. We regularly support a number of charities including Derby City Mission, Compassion and The Children's Society. We also give to disaster funds and specific needs among the homeless as they arise.

A joint venture between members of St. Mary's and the Wesleyan church created CHIKS, (Children's Homes in Kenya Support), an initiative to place homeless children in Christian homes funding their food and education.

We have supported the Diocese of North East India for some years.

St. Mary's along with the Crich Wesleyan and Crich Baptist churches support the SIMS charity which gives a Bible to each child leaving the junior schools in our parish.

St Mary's PCC

Our PCC is energetic and enthusiastic about our worship and outreach to the people of the Community in Crich Parish. The past six years have not been easy, but our PCC members have worked closely together through these years. We rejoice and thank God that the life of our church and our worship has continued uninterrupted throughout aided by a strong PCC. Our elected PCC members are a mixture of ages, all bringing their experience and expertise contributing to PCC business in many and valuable ways.



At present we have 12 members in total on our PCC:

- *Chairperson (to revert to vice chair on appointment of priest in charge)*
- *2 licensed Readers, one of whom is also our Hardwick Deanery Synod Representative*
- *2 Churchwardens*
- *8 other elected members*

We elect PCC members at our APCM on a “rolling” 3-year cycle which ensures that we always have experienced elected members. Our monthly meetings alternate between full PCC and Standing committee.

The on-line CPAS training called “PCC Tonight.” has impacted upon the way that we now conduct PCC meetings:

- We start and finish the PCC meeting with a short act of worship or with prayer and stop for prayer during the meeting when needed
- The PCC Secretary presents the minutes making it clear what was the purpose and the outcome of each agenda item
- We review each meeting at the end

Safeguarding

Safeguarding is on every full PCC agenda and our PSO ensures that all requirements are met for those needing DBS checks and safeguarding training. We have completed level 1 and are working on level 2 on our Parish dashboard.

On-going changes for 2024

- We need to review and update our MAP during 2024 and look forward to doing that with a new Priest-in-charge

Church Finances

- *Common Fund payment is £35,244 for 2023 which will be paid in full as it was in 2022*
- *Gift Aid in 2023 was £12,011*
- *Our Gift Day in 2023 produced £3,646*
- *Charitable Giving is 10% of church giving received. £6,6000 given in 2023.*
- *We have no outstanding debt*

Financially, St. Mary's remains sound. Money must be stewarded thoughtfully and prayerfully and we are fortunate to be helped in this by our treasurer of 20 years who is also one of our Readers.

As a PCC we thank God that we have always been able to pay 100% of our requested Common Fund.

We are, and have always been, a tithing church. Our PCC discusses and approves the budget for the following year at each November meeting. At this point 10% of anticipated income (apart from restricted income) is set aside for giving to the charities that St Mary's supports.

Regular collections are given as cash, Giving Envelopes, Standing Orders directly and contactless giving. The totals of the regular collections amount to around £1,000 per week.

Buildings and Resources

Inside our Church building

St Mary's Church is a medieval Grade 1 listed building which is much loved. Our church records go back to 1135. The full history of our Church building and all the Parish records have been collected together by the Crich Heritage Group on their website www.crichparish.co.uk which is useful for the many enquirers who contact us from across the world about their ancestors. Pictures and videos of St Mary's can be found on Google and YouTube.

Our Grade 1 status limits what we can get permission to do with our building but we are keen to explore possibilities further.

We wish our church to be accessible for all. We are registered as a Sight Friendly Church and also with Through the Roof. Recent adaptations of the church building have given us:

- *Improved accessibility including a wheelchair friendly toilet*
- *a room which can be used for small groups of children or adults*
- *Installation of an electric screen, a fixed projector and sound system.*

All required work under the last Quinquennial has been completed. There is on-going maintenance, which has been budgeted for and our Fabric Committee members are working through what still needs to be done. They are an invaluable team who sacrificially give of their time and skills.

A local team rings our church bells for special occasions, although work is required to our bells.

It is a priority that our church is open every day during the day. We have many visitors from all over the world and their comments in the visitors' book indicate their appreciation of the history, the atmosphere of peace and prayerfulness and the beauty that they encounter during their visit. A comment that we hear about our building is that **“You can feel the centuries of prayer coming out of the walls.”**

Outside our Church building

Our churchyard is closed for burials and contains nine war graves recognised by the Commonwealth War Graves Commission who have placed a plaque at the Church gate. It is visited frequently by local walkers using the nearby footpaths, or using our churchyard seats for their picnic lunch or a reflective time of rest or our toilet inside the building!

Responsibility for the maintenance of the churchyard lies with Amber Valley council. However, one of our PCC members is overseeing a graveyard re-wilding project and we are signed up with the Eco church scheme.

“Members of the congregation, Scouts and Cubs and our local community have carried out work including placing nesting boxes, introducing wildflower meadow areas, building hedgehog houses and log piles, planting donated snowdrops, as well as caring for the walls and mature trees in the churchyard. Our three year plan is progressing well!”

The community of Crich

Crich has an ancient village centre which is a focal point both for shopping, business and through roads. It is now a conservation area and though the old mineral rail lines from the many local quarries are gone, it would still be recognisable to past residents and visitors such as Florence Nightingale, George Stephenson, D.H. Lawrence and Charles Wesley.

The Health Centre, the parish's three church primary schools and junior school have a good reputation. Secondary aged students travel either to Anthony Gell School in Wirksworth, David Nieper in Alferton or Highfields in Matlock. There are pre-school facilities at the Glebe Field Community Centre and Popalong.

Crich attracts a wide ranging demographic including young families, professional people and new retirees moving in to what has been largely a community of agricultural and manual workers.

- *While there is some social housing the new developments are in the main more executive homes of 3 bedrooms plus.*
- *Most homes are owner occupied*
- *Approximately 25% of households are one person*
- *In the recent census about 18% declared a measure of disability, many of these requiring care.*
- *Since the 2011 census the population has increased by about 50% still rising, though remaining mainly white.*



Crich Summer Fete



Though Crich has an air of prosperity, there is still some deprivation. During Covid the church, along with other groups, ran a well-used community pantry. There remains issues with public transport and isolation.

Crich often has a real buzz and a reputation for having a very active sense of community. This was evidenced when Lockdown was announced by the instant reaction of organised groups of volunteers looking after the vulnerable.

There are active lobbying groups on matters such as the environment, local transport or planning. Well-dressing and a large Fete are centre-pieces of the summer, and heritage, music, art and various exercise and well-being groups attract support. Several hundred people gather for the November 5th bonfire organised by the Fete Committee and carols round the village Christmas Tree.

Crich Live with Live and Local put on frequent professional performances and after considerable difficulties and threats to their survival, three local pubs and the Comrades Club are also venues for a variety of entertainment.

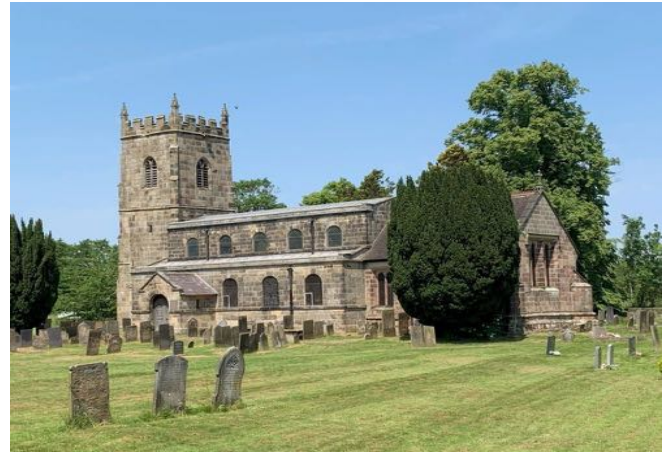
A flavour of the community activity can be gained from the quarterly Crich Standard Magazine website <http://www.crichstandard.org/> or for a sense of the parish's rich heritage to <https://crichparish.co.uk/>



Glebe Field Centre

Glebe Field Centre

The Glebe Field centre was built on diocesan land as a joint venture between the church and the community and is situated next to the new vicarage. It is managed by trustees, 2 of whom are appointed by the church. Due to our relationship we have three sessions a week free of charge. The Glebe was set up to offer services to the community that would not be available elsewhere.



All Saints Parish and Church

<https://www.allsaintssouthwingfield.org.uk>

The Parish of South Wingfield is situated 2 miles from Crich and comprises of the village of South Wingfield and the countryside settlements of Oakerthorpe, Moorwood Moor and Wingfield Park. The linear village of South Wingfield lies on a ridge of high ground. The skyline is dominated by the imposing ruins of Wingfield Manor. Built in 1440's by Ralph, Lord Cromwell, Treasurer of England. Later the home of Bess of Hardwick's husband, the Earl of Shrewsbury, who imprisoned Mary Queen of Scots here. Much of the village's historical importance was recognised by its designation as a Conservation Area in 1992. The area has an agricultural and industrial heritage.

All Saints Church stands on its own, ½ mile from the center of South Wingfield on the bank of the river Amber. The proximity to the river means the Church, churchyard and Church Hall are subject to periodic flooding.

On 20th October 2023 Storm Babet caused flooding in South Wingfield and was described by our churchwarden in the following way,

"Once again our church, churchyard and hall at All Saints flooded. This time it was up to an unprecedented depth of 450mm. Damage, repair and drying out times are currently being assessed but are likely to take a few months."

Flooding is not an unusual incident but depth of flooding on this occasion was at a record level. The aftermath of the flood left mess and damage. Once we had come to terms with the initial shock and distress, the PCC worked on a clear up programme with assistance from the Diocese and our insurance company. The resilience of all has been tested but prayerfully, with forethought and ingenuity the Church remains central to our lives. As one of our members powerfully described:

"Church is the people not the building."

We have maintained services by accepting the warm invitation from the Zion Methodist Church to use their building for worship. Facing the tasks of repairs, reordering the church, instigating

flood mitigation measures whilst daunting is also offering the opportunity to embrace change and plan optimistically for the future of the Church. The PCC are very grateful to the Diocesan Advisory Committee Secretary and Conservation Architect appointed by Insurance Company, for their support in navigating the path to restoration.

The Church is awaiting repairs, restoration and re-organisation and hopefully will be open for services in the Spring. The repairs to the Church Hall will take longer. The support and encouragement of our local churches; Zion Methodist Church and Birches Lane Baptist Church has been tremendous. Our working together culminated in a spiritually uplifting United Christmas Carol Service, with all 3 churches taking part. The appointment of a new priest will enhance our ability to interact with and serve our community.

The following give details of the life of All Saints Church and our activities, obviously since the October flooding some of these have been constrained.

Worship

Despite the uncertainties of the interregnums and illness of the previous incumbent we have maintained a regular pattern of services as well as continuing baptisms, weddings and funerals to meet the needs of our parishioners.

Services	11:00am Sunday
1 st & 3 rd Sunday	Holy Communion
2 nd & 4 th Sunday	Morning Worship

All Saints has a traditional style of worship. Currently Holy Communion and Morning Prayer are based on Common Worship using our own printed service sheets and we use Mission Praise. Prior to the Pandemic we held family services.

Service Leaders

Our services are led by our Lay Reader, Churchwarden and two retired clergy who lead services of Holy Communion, during the illness of our previous incumbent and in our vacancy.

Meetings

A regular prayer group meeting takes place in the Church Hall or as a Home-group.

Life Events

During 2022 our church was used for 3 baptisms, 5 weddings and 5 funerals. At our Patronal Festival we hold a memorial service for those who have had funerals for family members in the recent past. There are approximately 2 burials a year in the churchyard.

Mission at Church

The congregation numbers between 10 and 18 a week. The majority of the congregation are retired people with one young family. Our festival services at Easter, Harvest, Remembrance and Christmas Services are well attended by the wider community. The ever-popular Christmas Eve Crib Service draws in young families. Many of the children have previously attended a church toddler or baby group. There is a small army of volunteers who help with

maintenance of church and hall, churchyard grass cutting, cleaning, flower-arranging, administrative and fundraising. The involvement of members of the community who are not regular worshippers in some of these tasks reflects the importance they attach to the presence of All Saints Church in their community.

Mission With Our Village School



www.southwingfieldprimary.com



	Age range	Acting Headteacher	Children	Pupil premium
South Wingfield Primary School (State)	4 - 11	Melissa Kealey	137	11

The primary school attracts children from beyond the village and is thriving. The school was a regular visitor to the Church for their Christmas and Easter Services but this usage has reduced since Covid. The school used the Church Hall in 2022/3 to host visiting theatre groups. The previous incumbent and church members were warmly welcomed into school in the past to lead collective worship and assemblies. Members of the church have also assisted with a project by Valley CIDs to enable children to explore their Christian faith. Our Harvest goods in 2023 were donated to the School Pantry.

Mission in our Community

Church members are involved in many village and community activities including the Parish Council, WI, Local History Group and organising community events.

Stay & Play / Baby Play

For many years Church members ran a very well-supported weekly 'Stay and Play' session for parents and toddlers. Initially suspended during lockdown, the group was relaunched as 'Baby Play' group due to the changing age profile of the children in the Parish. After running successfully for 18 months, numbers declined as children moved onto pre-school and parents returned to work, thus the group is not currently meeting. Once the hall is reinstated the PCC will access the need for pre-school provision.

Spring & Christmas Fayres



i Church Hall



ii Church Hall kitchen & helpers

The church holds a Fayre twice a year – Spring and Christmas. These are well supported by parishioners who enjoy a lunch and some fundraising stalls.

Christmas Carol Concert and Summer Band Concert



In December 2022 we embarked on a new venture; namely a Christmas Concert to celebrate the birth of Jesus Christ and to make more use of our fine building. The Christmas Concert featured Shirland Welfare Band, a local brass band that was attended by over 100 people. This event was exceedingly well received, people enjoyed the informal nature of the concert which told the story of Christmas through carols, readings and music. Followed by mince pies and wine. Following this success

we held a summer concert with afternoon tea.

The positive response to initiatives such as Baby Play and the Concerts along with support for our twice-yearly fayres has encouraged us further to bring God's presence and comfort to the people we serve. We are considering the possibility of organising a regular monthly activity to support those socially isolated and lonely parishioners. We recognise we have much to do in this area and heart that our endeavors to date have been well received by the community.

Future Projects

We have recently received a bequest, and the PCC are now considering the best ways this can be used to further support our mission:

- Improving the facilities available in the Church and Hall.
- Reaching out to children, young people and younger adults and those generally underrepresented in our congregations so that we form a truly all-age worshipping community.
- Strengthen our ministry and outreach to our local primary school and pre-school playgroup.
- Meeting the varying pastoral needs of members of our community.

Working with other churches

We are blessed with good relationships with the two other churches in South Wingfield. The Zion Methodist Church and Birches Lane, Baptist Church share a Good Friday service which is rotated between the three churches. In the past we have shared our Lent course with Zion Methodist Church. For the last two years the three churches have produced a joint Christmas card which has been distributed to parishioners and funded an Advent calendar for the children attending South Wingfield Primary School.

All Saints PCC

Our PCC and church members have worked closely together in recent years to support the ministry and mission of the church and the fabric of the building.



Our PCC consists of 12 members
1 Churchwarden who is also our Hardwick Deanery Synod Representative
1 licensed Reader/ PTO
9 elected members and 1 co-opted

Currently the PCC meets monthly.
We elect PCC members at our APCM on a “rolling” 3-year cycle which ensures that we always have experienced elected members.

Our elected members all bring a wide variety of experience and expertise contributing to the life of the Church in a valuable way. We have been energized by the success of events and activities such as baby play and the concerts that we introduced over the last two years. The PCC believe a vital role for our new priest is to be a visible presence in the Parish, support our mission to spread the message of God widely and build relationships across the benefice and neighbouring parishes.

Safeguarding

We are a small congregation and take safeguarding concerns seriously. Safeguarding is on every PCC meeting agenda. Our PSO ensures that all requirements are met for those needing DBS checks and safeguarding training.

Church Finances

We endeavor to pay in full our Common Fund payment as we feel we should fully support the diocese.

- *Common Fund for 2022: £11,200*
- *Gift Aid for 2022: £7,749*
- *Collections for 2022: £1,684*
- *We have no outstanding debt*

We are fortunate to have a diligent and experienced Treasurer and a team of resourceful lay volunteers who over the years have taken on roles to reduce expenditure. Our income from the hall hire continues to be a very welcome contribution to funds.

Buildings and Resources

Church building

All Saints Church is a 12th century Grade II* listed building which is much loved and sits picturesquely in the washlands of the River Amber. The aisle and nave windows were remodelled in 1803 and the chancel refashioned in 1877. The tower contains a peal of 6 bells which were restored, rehung and rededicated on All Saints Eve, 1993. They are much admired and attract teams of visiting ringers. The Church can seat 150 people on wooden pews and has an electronic organ. The Church building is in a good condition generally, however minor but expensive repairs are a challenge for us, both in terms of resources and finance.

Churchyard

The Churchyard is open for burials. It is well maintained by volunteers and the care taken of graves and memorials reflects the fact that many families are still present in the village or live nearby. A well-used public footpath traverses the Churchyard and is popular with walkers and visitors to the area.

Church Hall



The Church Hall is an early 20th century wooden framed building, upgraded in the 1990s, with a large floor space, small meeting room fully stocked kitchen and toilets. The Church Hall has benefited from a completely new modern kitchen in the last 18 months, a consequence of several episodes of flooding. The Church Hall is used by local WI and U3A groups. Since the increase in energy prices, Church services during the winter months are held in the Church Hall.

Over the last year the hall has been hired for children's parties, charity fundraising events and a summer holiday club. All generating a welcome income stream. The Church Hall is underused but offers great potential as a space for services and activities. The PCC have ideas and an action plan to improve the facilities which we hope an incoming Priest will encourage and support.

The Church Hall has a car park which is used by church goers, visitors to the churchyard, hirers of the hall as well as the public.

Website

We have joined the 'A Church near You' website, where our parish services, events and missions are detailed. The benefice weekly notice sheet is also posted here. For ease of access, it can be reached on:

<https://www.allsaintssouthwingfield.org.uk>

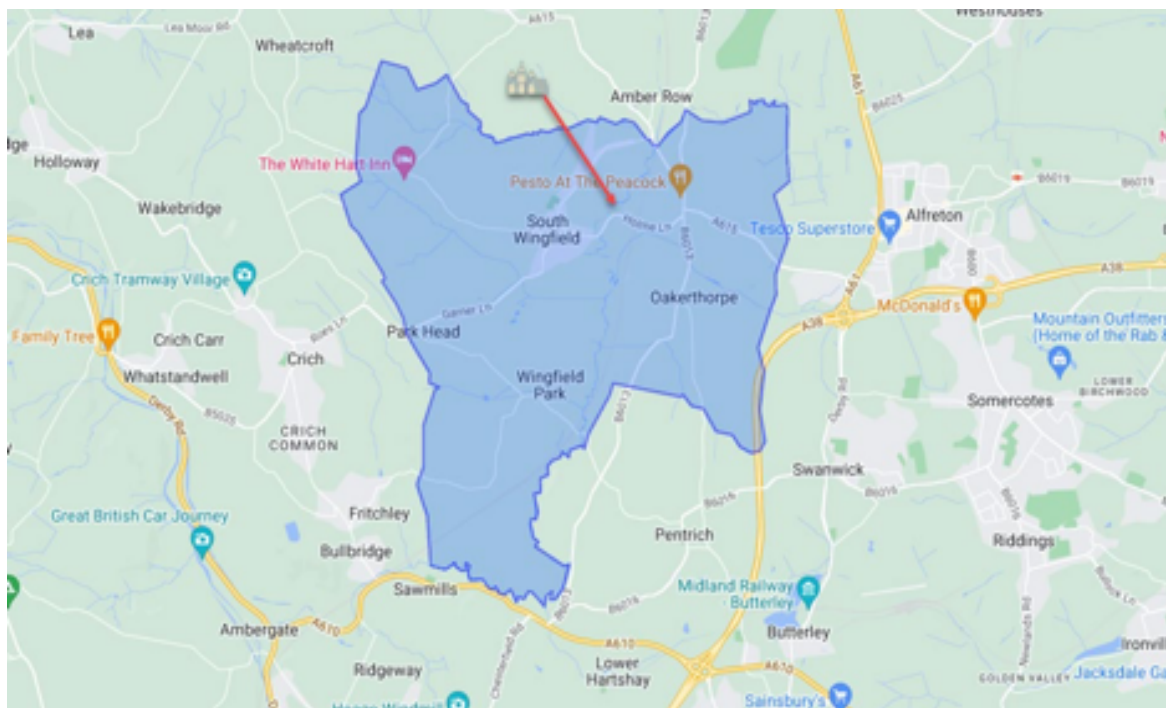
Smith Memorial Hall

Located in Wingfield Park the Smith Memorial Hall was endowed in 1934 as a separate Anglican chapel and community center. It is a small wooden building with seating for about 30, with its own burial ground. Services are held once a month, and usually led by the vicar. The congregation is small. The graveyard is still in use today but is the responsibility of South Wingfield Parish Church.

<https://www.crichparish.co.uk/webpages/SmithsGarveyard.html>

The Community

South Wingfield Parish stretches from the undulating historical landscape of Wingfield Park, from Moorwood Moor in the north, joining in the center of the village and leading downhill, past All Saints Church to Oakerthorpe. South Wingfield Parish has 701 households and a population of 1555, according to the 2021 census.¹



South Wingfield Parish

South Wingfield is an attractive and popular village. It attracts some families, professional couples and retirees who settle alongside families who have lived in the village all their lives. The cities of Sheffield, Nottingham and Derby are all within commuting distance and the M1 Motorway is within easy reach. Derby 13 miles. Nottingham 18 miles. Sheffield 38 miles.

We are well served by our primary school and popular Pre-School Playgroup both have a good reputation. Secondary aged pupils travel to Anthony Gell in Wirksworth, David Neiper in Alfreton or Highfields in Matlock. Crich Medical Centre has a branch surgery in South Wingfield with a dispensary. There is a mix of housing and in recent years some small-scale housing developments have been built.

The parish has a range of popular pubs, restaurants and inns. Several have been refurbished and are flourishing as restaurants, some with accommodation. One is a popular wedding venue whilst two traditional pubs remain.

The Social Club (formerly the Miners Welfare) hosts very popular events such as the annual Firework Display and Christmas Concert. They organised successful weekend community

¹ Parish Profiles - 2021 Census - Census of Population - Data Sources - home - Nomis - Official Census and Labour Market Statistics (nomisweb.co.uk)

events to celebrate the Queen's Platinum Jubilee and the King's Coronation, last summer they hosted the village's first Pride event.

Little evidence remains of the industrial past of this former coal mining community, except for Wingfield Station. A redundant station building, closed in 1967 and languishing forlornly by the Midland mainline. It is one of the oldest rural railway stations in the world. Now restored to its 1840's splendour, a conservation gem, it re-opened in October 2023 and is attracting many admiring visitors.

<https://www.derbyshirehistoricbuildingstrust.org.uk/wingfield-station-project>



In 2019 the Local History Group and Parish Council, with tremendous support from parishioners, erected a War Memorial dedicated to the fallen from the two World Wars. Sadly, the Village Shop closed in February 2020 leaving Taylors Corn Stores as our only shop, selling flour, eggs and oats, animal feedstuffs, gardening and pet products. There is a residential care home and sheltered housing in the Parish.

There are several active local groups such as the WI, Local History Group, School PTFA, Tractor Club and a community litter picking group. Along with successful lobbying groups on matters such as planning and the environment. There is a highly successful Cricket Club with adult and junior teams, a Crown Green Bowls Club in addition to a golf course at Alfreton which is within the Parish boundary.

The nearby towns of Alfreton, Matlock and Belper have a range of shops, supermarkets, leisure facilities and cinemas. The cities of Nottingham, Derby and Sheffield provide theatres, art galleries and sporting venues. Alfreton railway station offers a direct service to Chesterfield, Sheffield and Nottingham. Further afield are the landed manors of Chatsworth (home to the Dukes of Devonshire, our patron) and Hardwick Hall (from which the Deanery takes its name) and now under the care of the National Trust and the ruins of the old hall under the care of English Heritage.

Conclusions

**We are a committed fellowship of believers,
with lots of skills and talents.**

We appreciate that rural ministry is not always as easy as the rural idyll would have us believe but we do assure you of our support, friendship and good humour. We have faced challenges aplenty. This looks to continue but we look forward to welcoming a spiritual leader to guide us, recognise opportunities and encourage us on our journey along God's path, as we seek to know Christ and to make Him known.



The Vicarage

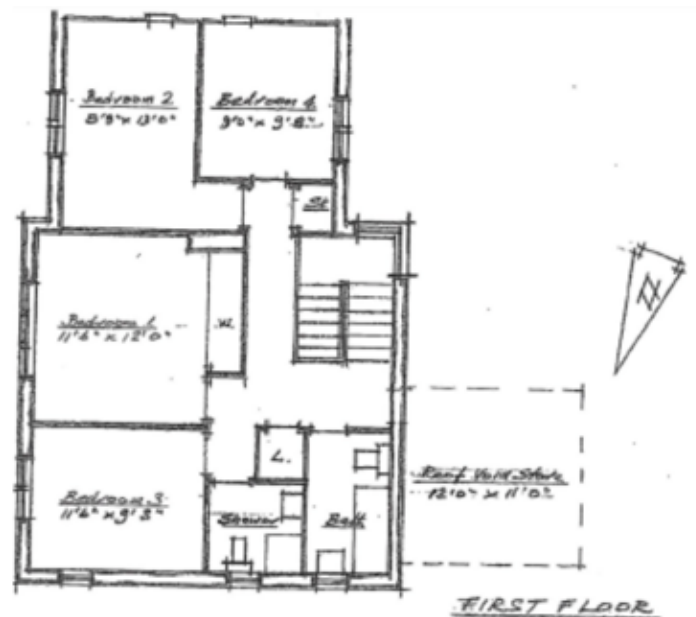
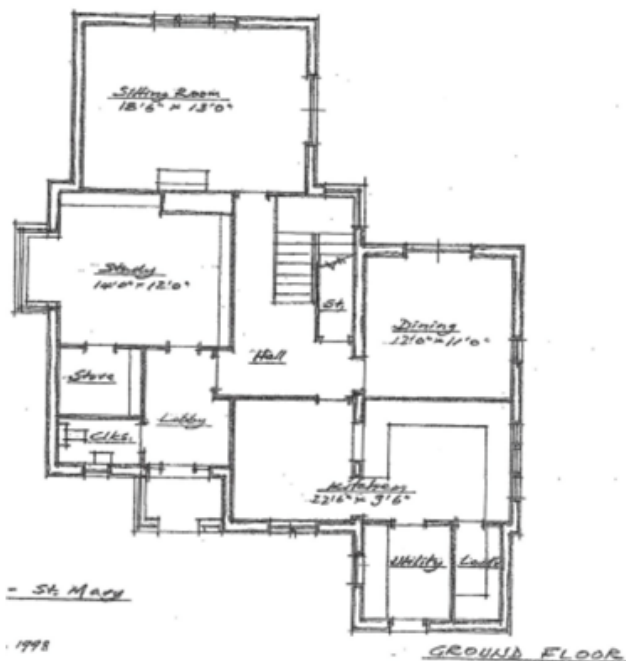
The vicarage is a spacious, detached family home built in 1997 set in a corner plot near the centre of Crich, about five minute walk from St Mary's church.

The front door opens into an entrance hall with cloakroom and good-sized study. An inner door separates this part from the rest of the house ensuring the occupant's privacy if the study is in use for church purposes.

Beyond this is a roomy recently (2019) refurbished kitchen and breakfast room with utility room and larder. Adjacent to which is a dining room and large lounge. Upstairs are 4 bedrooms- 3 double and one good-sized single; a bathroom and a shower room. All the windows have been replaced in 2023. A lawned garden with patio surrounds most of the house with a garage and a drive providing off-road parking for several cars.

Adjacent to the vicarage are The Glebe (the community centre), Doctors Surgery and pharmacy with the village market place being a few minutes walk away. A range of supermarkets and restaurants are available within 15 minutes drive in Belper, Matlock, Alfreton and Ripley.

The Vicarage floor plans (not drawn to scale)



CONTACTS

Archdeacon

Karen Hamblin

karen.hamblin@derby.anglican.org

01332 388699

Area Dean

Karen Bradley

rev.karen@yahoo.co.uk

07823 440513 / 01623 748577

CPAS

Mike Duff

mduff@cpas.org.uk

024 7526 7843

St Mary's

Deirdre Offord

deirdreofford@gmail.com

01773 863722

Justin Mansfield

justin.mansfield@btinternet.com

07917 117091

All Saint's

Mark Irving

mark@mirving.me.uk

07834 353912

Carol Brown

carolbrown05@btinternet.com

07717 572668

This post is subject to an enhanced DBS check