

June 2024



Priest in Charge, St Luke's Derby

Archdeacon's Welcome



If you are looking for a deeply fulfilling priestly ministry in a securely Anglo-Catholic tradition, serving a significant estate context, please read on.

St Luke's Derby is located at the centre of one of Derby's significant estates. The Stockbrook estate is characterised by both social and economic deprivation and a gloriously diverse demographic. This single-church context will appeal to a missional priest with a strong theology of place and incarnation. The significant potential for church growth will be fuelled by a priestly ministry of presence throughout the parish, its schools and community structures.

In recent times St Luke's has been part of a two church, but single parish benefice, with St Bartholomew's Derby. The two churches serve similarly dense, deprived, and diverse contexts packed with missional potential. Each merit its own Priest in Charge to focus on the needs and significant opportunity of each estate. Therefore, the Diocese of Derby will bring a pastoral scheme to separate the two parishes. The appointed Priest in Charge at St Luke's will not have any ministerial responsibility or involvement with St Bartholomew's.

The Diocese of Derby takes the wellbeing of its clergy seriously. The new priest will join an active and supportive deanery chapter led by the Area and Assistant Dean. Warm and encouraging relationships exist with St Anne's Derby and Fr Giles Orton SSC, its Incumbent. There is an annual clergy conference alongside annual retreat and training grants.

Led by the Bishop's Leadership Team, the diocese has been developing an exciting and focused strategic plan, to fulfil its vision of the Kingdom of God: Good News for all. The appointed priest will join us at the start of that strategy coming to fruition in diocesan life.

As archdeacon, I welcome requests for informal conversations about this role and look forward to welcoming the appointed priest to the archdeaconry and diocese. Thank you for taking the time to read, reflect and pray through this profile. I recognise that any potential move is a costly discernment process and want to assure you of my prayers as you discern whether this is the right role for you.

The Venerable Matthew Trick
Archdeacon of Derby City & South Derbyshire

Who we are looking for

St Luke's feel strongly that the life and ministry of our church is shared by every member. We have just completed a post-it note exercise with the congregation to give a chance for the voice of the people to be heard. Here are just a few of the submissions:

A priest of the Anglo-Catholic tradition, a priest who is spiritual, prayerful, caring, and courteous towards all people.	A priest who is good working both individually and collaboratively within a team and who is keen on developing mission within our local community.
We need someone who will delegate but who will also listen to the voices of his congregation.	We are looking for a priest who has a sense of humour and a pleasant manner, someone who is enthusiastic and keen to be involved in both church and community life.
This priest will be accessible and visible within the parish and will work with local schools and other organisations.	He will become our spiritual leader and a shepherd to all those within his parish.

Location and Map

[ArcGIS - Church of England parish map](#)





People – Demographic Information

The area served by St Luke's is largely Victorian terraced housing, with some more recent redevelopment. The population of the area is estimated at 10,000 and is growing year on year. The residents are of diverse backgrounds; there are many young families; and a significant number of houses are occupied by students. There is a facility for refugees waiting to be rehoused. Housing for the elderly is also represented.

There are elements of social need in the area, and there are economic migrants and asylum seekers from many different places. Some of the groups are from Christian backgrounds, and there is a Refugee Centre not far from the church. Furthermore, the modern Royal Derby Hospital lies just beyond the parish boundary. It is our hope that a new priest will be exploring ways to work with other agencies to see how we can share in these spheres of ministry.

There is no churchyard for burials, but an area known as the church garden has already been considered as a site for a church hall, funded by selling some of the land for development.

The City of Derby

Derby is a place with an important heritage, a vibrant present and a great future. It has been Derventio, a Roman military fort; an ethnically diverse settlement with two communities of Saxons and Vikings living in harmony; an important mediaeval market town, chartered since the thirteenth century; an internationally significant hub of the eighteenth century Enlightenment and one of the birthplaces of the industrial revolution; a nineteenth century railway and engineering town, at the forefront of civic pride and development; a twentieth century world class centre for aero-engineering; and now in the twenty-first century a multi-cultural university city, and a centre for technological innovation.

There are excellent transport links; Junction 25 on the M1 lies between Derby and nearby Nottingham; the A52 will take you quickly to Nottingham, and on towards the east coast (and Walsingham!), the A50 provides a quick link to Stoke and the M6, and then to North Wales coast or Scotland; the A38 provides dual carriageway links to Birmingham, and onwards to the west country; London is an hour and a half away by train, and as befits a town which provided one of the very first passenger rail services in the world 1839, Derby is a major hub of rail transport direct to such distant places as Glasgow, Edinburgh, Cardiff, and Plymouth.

Derby is one of Britain's greenest cities, with many open spaces and parks, including one of the world's first public parks, the Arboretum opened in 1840. And the Derbyshire countryside is on your doorstep, from the gently undulating fields and meadows of the Trent Valley in the south, through the upland limestone country of the White Peak, to the mountainous wildernesses of the gritstone landscapes in the north. Important historic houses and their parks are to be found at Sudbury, Calke Abbey, Kedleston, Hardwick Hall, Chatsworth and Haddon Hall. The Derwent Valley World Heritage Site runs from Derby northwards.

The city has a lively cafe and nightlife culture. The Quad is a cultural centre in a quirky modern building which houses two art cinema screens and exhibition space, other multiplex cinemas are available, a large new performance space is under construction in the very centre of the town, the Derby Theatre is an established centre of performing arts, the Velodrome is a huge indoor space for sports and performances, and Derby County FC at the Pride Park Stadium were one of the twelve founding members of the Football League.



Schools & Community Services

St Luke's enjoys good relationships with local schools, as detailed below. Missional engagement with schools is a high priority for the new Priest in Charge.

Bishop Lonsdale CofE Primary School & Nursery

www.bishoplonsdale.derby.sch.uk/web/

There is a good church school in easy walking distance, and post-Covid we are developing existing links in consultation with a very supportive head teacher. Mass in school is being restored, and the customary visits to the church building have begun once more. Church members are represented on the Governing Body.

Derby Cathedral School

www.derbycathedralschool.org.uk

St Luke's is the only parish in the diocese to have both a CofE primary and secondary school. Derby Cathedral School (DCS) opened in 2018 and in 2023 secured a 'good' OFSTED rating in its first inspection. DCS was established as a non-selective, Christian free school in partnership with Derby Cathedral. The Dean of Derby sits ex-officio on the Local Governing Body and the Cathedral's Canon for Community Learning takes a lead on school-cathedral integration.

The Firs Primary School

www.firsprimary.derby.sch.uk

St Luke's also enjoys a strong relationship with Firs Primary School which is holding both Harvest, Christmas and Easter Services in St. Luke's this school year.



Church Description

St Luke's stands in the center of a large residential estate. It has a long-standing traditional catholic heritage, and commitment to spiritual life, evangelism, mission and bringing Good News to those in need. There is a wealth of mission opportunities.

St Luke's has a heroic tradition of close involvement with the needs of the working-class community it serves and is held in affection by the local residents. We believe the time is right for us to reach out afresh into this community.

New projects are already underway which we believe will open our hearts, our communities, and our church to the people we serve. We look for a priest who will help drive this forward, underpinned by the parish's spiritual development and in partnership with our lay people, neighbouring churches of our own and other traditions, and community institutions and agencies.

Models of this pattern of this ministry are already present in our sister Society parish of St Anne's, with whom we share joint services, Lent groups and Holy Week, Saints Days, quiet days and the Walsingham pilgrimage.

Worship Pattern

At the heart of our life is our Sunday Mass at 10.15 each week. Mass is generally said with hymns, and a simple musical setting. Covid has had an impact on attendance; at present we expect around 20 people in church each week. It is a heartening sign that new worshippers have begun attending already, and this year we have had several baptisms and two candidates for confirmation also. We believe that there is a great opportunity for these numbers to grow. In the past there has been a flourishing ministry for the pastoral offices, and we hope that a new priest will help this to grow once more.

We have always had a strong social life, and this continues. Coffee mornings, Christmas and Summer Fayre, the Friendship Group, a social committee, concerts, meals, garden parties and similar events take place, and there is a regular Fellowship Group. Small meetings can take place at the back of the Chapel and some social events take place in the area at the south end of the nave, which has been set up as a social area with kitchen facilities and 3 toilets. This is used after Mass on Sunday for coffee and provides an excellent opportunity for people of the area to visit the church and meet its people. Church Buildings & Vicarage (Inc. Photos)

You might wish to include a map graphic showing the position of the vicarage relative to key points e.g. church buildings, schools etc.



Our Church Building of St Luke's

St Luke's is a very large and imposing edifice dating from 1871, a grade 2* listed building much admired by Pevsner and Betjeman; a church guidebook is available on request. The tower is a landmark across the city, and houses the heaviest ring of eight bells in the county. There is a fine organ by Abbott, and a grand piano is also available.

The rear of the very spacious nave provides a space for social events and community activities. The great apsidal sanctuary, reordered for modern liturgy but equally suited to more traditional services, is a very fitting theatre which on great occasions can accommodate numerous concelebrants and servers as well as providing a place for singers. A crypt chapel, with separate heating arrangements, can comfortably seat some fifty worshippers. It has been used for midweek Mass, and Daily Offices when we had an incumbent; it also offers space for meetings.

The QI has been recently completed and some significant works identified.. However, the damage caused by pigeons in the Belfry and damp penetration has recently been rectified, the organ has been serviced and the bellows repaired, the main gas heating boiler is fairly new, and we have the capital to replace the smaller boiler which heats the chapel independently, and this will be done shortly. Volunteers from Rolls Royce have been helping to maintain the grounds around the Church.

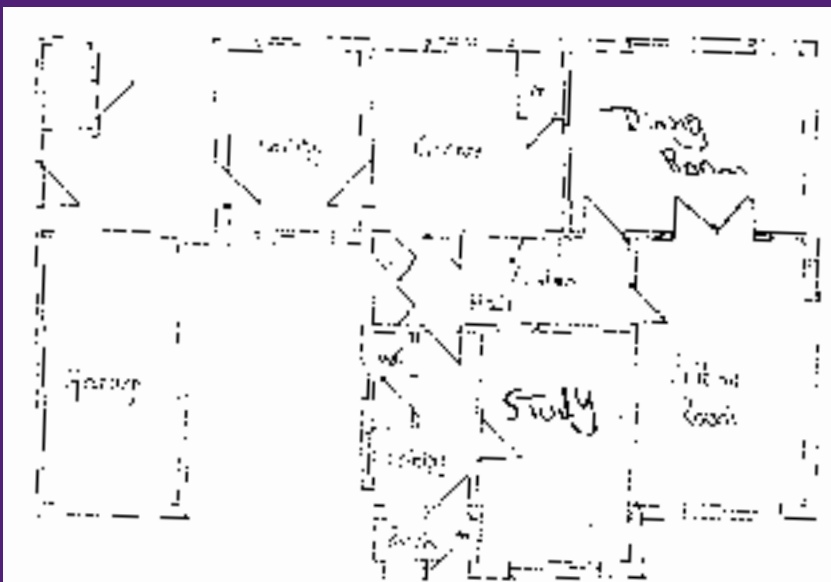


The Vicarage

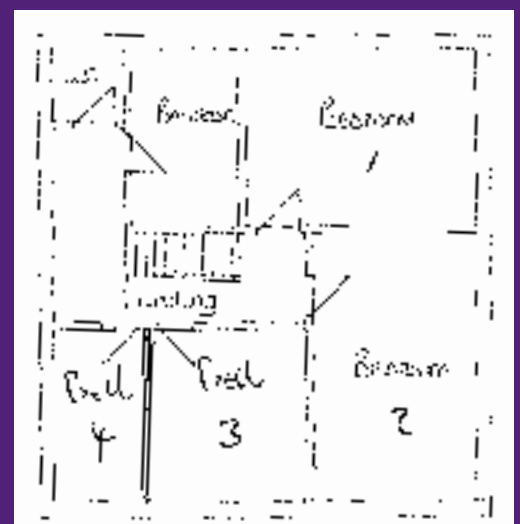


The Vicarage occupies a generous corner plot at 48 Peet Street, close to St Luke's Church and local schools.

The Vicarage is a 1970's detached property with four bedrooms and three reception rooms. The diocese will refurbish the property prior to occupation by the next Incumbent.



Ground Floor



First Floor



Ministry Team

There is a committed PCC, energised, and hope-filled ready to work with the new Priest in Charge. Church Officers are in place including Church Warden, PCC Secretary, Treasurer and Parish Safeguarding Officer. There are experienced servers who committedly support the Sunday Mass.

Finance

Finances are stewarded well, despite the limited financial resources of the church. Planned giving reflects the generosity of the small congregation. Utility bills given the size of the main worship space account for a significant percentage of annual expenditure.

St Luke's participates willingly in the diocese' Common Fund. In 2023 St Luke's Common request was £17,773 of which St Luke's were able to contribute nearly £1000. In 2024 the request was lowered to £14,787. Exploring ways of increasing this contribution will be important for the next Priest in Charge.