

September 2024

Priest-in-charge of St Laurence, Long Eaton and Holy Trinity, Ilkeston



 **The Society**
under the patronage of Saint Willrid and Saint Hilda



Transformed Lives | Growing Church | Building Community
THE KINGDOM OF GOD - GOOD NEWS FOR ALL

Archdeacon's Welcome



Welcome to the combined Parish Profile for Holy Trinity, Ilkeston and St. Laurence, Long Eaton, each 0.5 FTE.

These two Parishes are united by tradition, but also as you read through you will notice that their unity also encompasses their commitment to the Diocesan vision and its outworking in each context, expressed in a desire to grow in mission and ministry, especially amongst children, young people and families whilst working alongside and with neighbouring Parishes in both contexts in order to see transformed lives, growing church and communities built up and strengthened.

The last few years have not been straight-forward for either of these Parishes and there are significant challenges but there is a genuine hunger for change and a desire to work 'with' rather than 'alone'. My experience as Archdeacon working with both these faithful and hard-working Parishes has been extremely positive and has led to the development of strong and trusting relationships, something which together we are committed to maintaining.

The post will require energy, vision and perseverance rooted in prayer and sacrament. I am confident that working together under God we will be able to appoint someone who will take what is and, in partnership with congregation, community, Deanery and Diocese, be able to grow towards confidently proclaiming and demonstrating that the Kingdom of God really is good news for all.

Please be in touch if a conversation would be helpful.

With my continuing prayers for you and these congregations and communities,

A handwritten signature in black ink, which appears to read 'K Hamblin'. The signature is written in a cursive style and is positioned above a horizontal line.

The Venerable Karen Hamblin
Archdeacon of East Derbyshire

Introduction and Summary

We are two distinct and separate parishes with different PCCs and finances. St Laurence's is in Long Eaton and Holy Trinity in Ilkeston: both important towns in this part of southeast Derbyshire, and each very much with their own identity. Although we are located about seven miles apart, we have been closely associated for many years, and for about the last twelve years have shared an Incumbent.

We are looking for a full-time stipendiary Priest to minister to the two parishes and across the two towns.

The parishes are located in the Southeast Derbyshire Deanery and the East Derbyshire Archdeaconry. As the only two Society parishes in the Deanery, it is our traditional catholic faith which binds us together rather than any particular community affinity. Both parishes have passed resolutions under the House of Bishops' Declaration on the Ministry of Bishops and Priests and we are under the extended episcopal care of the **Bishop of Oswestry**.

Both churches recognise the need to work more **collaboratively** with other parishes in each town and to have **greater visibility** within the separate local communities. And we certainly seek to work in a spirit of **mutual flourishing**, developing better relationships across the **communities, Deanery, Archdeaconry and Diocese**.

Clergy Support: there are PTO and self-supporting Priests who have generously supported us before and during vacancy and we are confident this could continue if needed.

Lay Support: there are contrasting strengths between the two churches.

At Holy Trinity there is a full and enthusiastic team of people across all areas: 2 Churchwardens, Treasurer and Secretary and a full PCC complement; a very experienced team of servers, good support for mission and outreach work, a thriving social team and overall, a very collaborative outlook.

At St Laurence's the laity have not felt encouraged over the last few years and this has led to no Churchwardens currently, but they have a strong Treasurer, a willing Secretary and a supportive PCC, all of whom work hard and want to see the situation improve.

Our Vision

We are traditional catholic parishes and the celebration of the Mass is therefore central to our life and will continue to be so. But we want to share our Eucharistic life with the wider community and we therefore want to be more effective in outreach and mission in our parishes, and beyond. Improving and deepening our relationships with neighbouring parishes in both locations is also something we want to aim for. We want to be a beacon of light that enables greater involvement with the communities we serve. As a Society parish we have access to the Healthy Churches Initiative, however, we also want to engage with the Derby diocese's own Mission Action Planning along with other parishes. We consider that this will help us to move forward in all that we do at both churches. We need help with this and we would want it to be a priority for our new Incumbent.

Our Parishes

St Laurence's is in the centre of the town and is an important landmark with a civic function and Long Eaton is also where the new incumbent will live. It stands in a prominent position in the Market Place and has good visibility in the town. There is a church school (St. Laurence Church of England Primary School www.st-laurence.derbyshire.sch.uk) with which the parish has strong links and we would want that to be maintained and developed.

Holy Trinity is located outside Ilkeston town centre and doesn't have the same community identity. It is not the main town church in Ilkeston, being squeezed between two larger parishes and its geographical location can be challenging. Because the parishes are some miles apart this does present some challenges particularly in terms of service times and we recognise the need for a flexible and imaginative approach. We are therefore open to looking at options for our Sunday Parish Masses, particularly the use of retired clergy helping out at both churches so that the new Priest-in-Charge has the opportunity to socialise with the congregation following Mass and get to know his flock. Holy Trinity particularly, but also St Laurence's to a lesser extent,

attract many from outside the parish. We each strongly identify with our own towns and relate to the local community and are therefore somewhat different in character.

There is a need as well for both parishes to become more closely involved with the other churches in their own localities, and indeed within the Deanery, so as to further community involvement and mission. We regard greater collaboration and visibility within each town as a priority for the new Priest. The Vicar of the neighbouring parish of Cotmanhay and Shipley also has a role across all the churches in Ilkeston promoting social justice across Ilkeston and we hope to be involved in developing a vision for the town along with her.

The Area

Long Eaton and Ilkeston are the two principal towns in the Borough of Erewash which is situated along the Derbyshire/Nottinghamshire border between the cities of Derby and Nottingham. Long Eaton identifies closely with Nottingham; Ilkeston with both cities. The industrial heritage of the area still accounts to some extent for the identity of the communities: Ilkeston was based principally on coal mining and iron, Long Eaton principally on textiles. The heavy industry has now disappeared and whilst both towns have some light industry and services both places serve as commuter towns for the neighbouring cities. There are all the normal services and facilities locally and a wide range of educational establishments. Both Derby and Nottingham are within eight to ten miles and are easily accessible and offer a much wider range of amenities. This is a centrally located part of the country and there are excellent transport links, with a number of mainline stations, the M1 and East Midlands Airport all situated close by. The area is surrounded by some beautiful countryside and the Peak District National Park is about 20 miles away.

The priest we are looking for

We are seeking a full-time stipendiary Priest-in-Charge of St Laurence's Long Eaton and Priest-in-Charge of Holy Trinity Ilkeston.

The new Incumbent will be committed to the Catholic tradition of the Church of England and will be a Priest of the Society and/or a member of the Society of the Holy Cross, or willing to become a member.

We need someone who:

- Recognises the centrality of the Sacraments in our church life and will maintain and value the existing liturgical and spiritual traditions of each parish. We need a willing teacher and preacher able to nurture and encourage people in the faith.
- Is a good team player who will work collaboratively and sympathetically with the laity so he can strengthen and empower them.
- Is a good communicator able to relate easily to people of all ages and circumstances: approachable and a good listener, tolerant and understanding of the differences he encounters among us so that he can work to develop and grow the parishes.
- Will encourage and develop both individuals, and the parishes corporately, helping to further our vision and plans for the future especially in the areas of mission and outreach so that we can flourish and grow.
- Whilst recognising the place and value of all age groups and be welcoming to everyone, especially newcomers and enquirers, will encourage families, nurture children and young people and be able to effectively connect with them. He will also welcome involvement at St Laurence's Church of England Primary School and other schools in both parishes.
- Will be able to commit himself to these two different parishes in separate locations and will develop relationships in both towns, developing involvement with other churches and having visibility in both communities.
- Will happily work with the Diocesan Vision, developing relationships with other parishes in our separate towns and within the Deanery and at Diocesan level and be fully on-board with the concept of mutual flourishing and work for that end, maintaining and indeed improving on the good relationships we have already established.



Holy Trinity Ilkeston

Some information about the area

The town of Ilkeston is located in Derbyshire along the border with Nottinghamshire and has a population of about 38,000. It has an individual character of its own with an enterprising spirit and with what might be called a 'blue collar' culture and is one of the few places where the East Midlands dialect can still be heard. The people tend to be direct and down to earth and generally proud of their town and some may say this is accompanied by a certain insularity. The town itself has a number of social challenges and, like many other towns, has seen a decline in town centre shops and other facilities and some parts are in need of regeneration. Although the town does have a strong independent quality it also identifies with both Nottingham (7 miles away) and Derby (10 miles away). Both cities are important regional centres and between them have a wide variety of cultural and entertainment venues, educational establishments and many other amenities.

Ilkeston enjoys easy access to the M1 motorway and there is a mainline station at Ilkeston as well as stations at Derby, Nottingham and East Midlands Parkway. East Midlands International airport is within 20 minutes travelling distance and has a wide range of national and international destinations available. There are good local transport links to both Derby and Nottingham. Although the town is urban and industrial it is surrounded by attractive countryside and the Peak District National Park is about 20 miles away.

This part of Derbyshire has a strong industrial heritage and Ilkeston became prosperous at the end of the 19th century on the back of the coal mining, iron and textiles industries. These traditional industries have now largely been replaced by small manufacturing and service and transport enterprises, but textiles remain mainly in the form of upholstery and lingerie manufacture. There are large numbers of people who commute to Nottingham and Derby.

The town itself has all the usual facilities, amenities and educational establishments. The proximity of two large cities provides much more. There is easy access to the surrounding countryside including a large country park (ShIPLEY Country Park) as well as a navigable canal.

The community

The parish itself is located to the north of the town centre (about two thirds of a mile away). It is geographically small and is between the main town and housing estates to the north. It is semi-suburban in nature and lacks any unique identity of its own and does not correspond to any local authority area. Because of this there is very little 'community' feel in the parish itself which makes 'community' involvement challenging. St Mary's, Ilkeston's main church, is located in the Market Place and is the civic church for the town. About half the parish is residential; the rest includes a large industrial estate, and a number of other businesses as well as shops and supermarkets.

The population of the parish is 4743 and with 2090 occupied households. It is ranked 2869 on the Index of Deprivation and the population is predominantly white ethnic: 96.5%. All figures from ArcGis Church of England map.

The housing is mixed but predominantly terraced and semi-detached. There have however been some extensive new developments over recent years and more are planned and the result has been to improve the housing stock of the area. We see the resultant increase in population from these developments as an opportunity for mission within the parish which we need to develop.

Because of its small size, there are a limited number of amenities and facilities within the parish itself, but much more in the town of Ilkeston generally. The following are all located within the parish: -

- Charlotte Street Nursery and Infants School (www.charlotte-school.co.uk) and Granby Junior School (www.granbyjuniorschool.co.uk).
- A leisure centre with swimming pool.
- A Squash Club.
- A pub and a number of restaurants and takeaway establishments.
- A Tesco Extra Store - the parish boundary goes through the middle of it.
- Aldi Supermarket.
- The Arena Church: a Pentecostal-type Christian centre which offers a wide range of facilities to the wider community.





A little history

The parish was formed in the 1880s out of the neighbouring parish of St Mary's to cater for what was then a thriving industrial community based mainly on coal mining and there were at that time a number of pits located in the parish. It was also formed out of the enthusiasm of the Anglo-Catholic revival of those times: a tradition that remains unbroken to this day. It was known locally as 'The Miners' Church' and was built to serve a working community with a considerable amount towards the cost coming from contributions from the public. The church saw a period of decline and was in danger of being closed down in the 1980s but was revived and **has** slowly built itself up.

After the retirement of the last Vicar of Holy Trinity in 2010 we have shared our Incumbent with St Laurence's Long Eaton – he being the Vicar there and Priest-in-Charge at Holy Trinity. Our first Priest-in-Charge resigned in 2011 after only a few months (to go to the Ordinariate). Following that we had a period of stability until October 2018 when we again entered a Vacancy. A new Priest was appointed in December 2020. This was at a difficult time when there were still lockdowns because of Covid. That Priest has now moved on and we have had no incumbent since November 2023.

The church building

The church was built in the 1880s in the Gothic style and is constructed in brick with coursed rock-faced sandstone facing, with ashlar window surrounds. It is not a listed building; this has proved to be something of a disadvantage in the past when trying to raise funds for building works. It is located with roads to 3 sides, there being a garden to the south. There is limited on-road parking available, some of it restricted on weekdays but not on Sundays. This awkward position can sometimes be challenging when organising events.

In the early 1980s the 3 western bays of the nave and the north aisle were partitioned off to form a church hall. This has left the church consisting of the chancel and a small truncated portion of the nave, leaving it feeling somewhat out of proportion but with an intimate atmosphere. The church therefore is not spacious and we can struggle to get everyone in on the occasional big events. It therefore does not easily lend itself to non-worship events such as brass band or choir recitals.

The church can seat a maximum of about 120, although some of that would be behind pillars with obstructed views of the sanctuary and in a side chapel outside the main body of the church. The main body of the church can seat about 90 comfortably but there would still be restricted visibility for some; our normal Sunday congregation of about 35/45 is easily accommodated. There is access to the church and hall for the disabled although this is in need of improvement.

There are two outstanding features of the church which are worthy of a particular mention. Firstly, the east window - the Window of the Nativity; a fine window installed in 1913 by Bernard Sleigh who was associated with the Birmingham School of Art and shows the influence of Christopher Whall. Secondly the organ: this is a Harrison and Harrison and was installed in 1909 and is still in reasonably good working order and has had a number of improvements, most recently a new blower.

The church hall is equipped with a kitchen (completely refurbished just a few years ago) and toilets and is used for refreshments after Sunday Mass and for other social events. A number of other groups also pay to use the hall and we have a Brownie and Rainbow group each week. The hall provides a very useful facility and there is still scope for more use by the wider community.

Apart from the main church there are two side chapels: the Lady Chapel, where weekday masses are said, and a smaller Magdalene Chapel (used only occasionally) and which is mainly used for additional seating when the church is full (e.g. when there are Baptisms, Funerals etc.)

There is a garden to the south which slopes away and this is maintained on a regular basis by a mixture of paid and volunteer help and is an attractive feature.

The interior of the church is attractive and in generally good order. Over the course of the last few years, it has been completely redecorated and re-carpeted. We have also carried out a programme of repairing and refurbishing the seating within the church. A new central heating boiler was installed in 2012 and a completely new sound system was put in place in 2016

In recent years a comprehensive programme of building works has been carried out externally including the replacement of all rainwater goods, roof repairs, installation of a new lightning protection system and drainage improvement. The most recent Quinquennial Inspection was carried out in November 2019. We didn't have the funds available to do all the work recommended, but the church architect advised upon where the priorities lay and some work has been carried out in recent years.

We have over the last couple of years considered how heating can be improved but there is no easy answer and it is an on-going project.





Church life

There are 53 people on the Electoral Role, with the majority being non-resident but fairly local.

Worship at Holy Trinity is dignified and firmly in the Catholic tradition, with Sung Mass at 11 o'clock being our main Sunday service. The service is based largely on the Roman Missal, and Redemptorist leaflets are provided. There is usually a full complement of servers and incense is used. The attendance is normally between 35 and 45.

In addition, we have weekday Masses on Tuesday mornings at 9.30 and on Thursday Evenings at 7 o'clock – the attendance at each service is about 8/12. Other Masses are celebrated on principal feast days and there is a full programme of services during Lent and Holy Week.

The congregation is mainly middle aged and elderly although there are typically 4 to 6 children or young people on a Sunday. Our 'Worshipping Community' as reflected in our Statistics for Mission report for 2023 is as follows:

Children (0-10)	1
Young People (11-17)	5
Adults (18-69)	16
Adults (70+)	35
Total	57

Music plays an important part in our services and we have a regular Organist, David Allen and also the occasional services of Jean Jarvis. We have a Harrison & Harrison organ which is generally in good order and a new blower was fitted in 2013 at a cost of £6500. Our choir was disbanded some years ago, due to the advanced age of most members, but we do have some very good singers within the congregation.

We have an experienced and dedicated team of Servers (led by our Sacristan David Hudson who has been associated with the church for over 60 years) and there are usually at least 4 robed and in the sanctuary. The team includes a number of young people.

Occasional Offices during 2023 were as follows: -

Baptisms: 3
Funerals: 4
Weddings: 1

We have a Holy Trinity Brownie group and they attend Mass usually once a month for their Church Parade. This is also attended by parents, grandparents etc. The Brownies use the church hall on Monday evenings and we have developed a good relationship with their leaders. A separate Rainbow Group also use the church hall. Home Communion is given to the elderly as the need arises both in their own homes and in Residential Care Homes within the parish and beyond.

There is further involvement in both Deanery and Diocesan matters with our Parish Safeguarding Officer, Nicky Bailey, being the Safeguarding Lead for the Deanery. Furthermore, we have two members on the Deanery Synod and one member on the Diocesan Synod which reflects our desire to be involved beyond the parish.

We have had links in the past with the nuns at the Community of the Holy Cross at Costock but since our last but one Parish Priest left that link has largely gone and this is something that could be revived. This is an Anglican Benedictine Community and our clergy celebrated Mass there from time to time and we had regular 'quiet days' there usually during Advent and Lent.



Church activities

Mission and Outreach

Over the last 3 years or so we have endeavoured to establish a more focused outreach group led by Helen Crisp and this has proved to be very successful. We now have a number of outreach activities on a regular basis.

We have two community schools within the parish.

1. Charlotte Nursery and Infants School where there is a good relationship and has been strong involvement for many years. Members of the church community have been Governors in the past but there is currently no such formal link. There have been visits from the school on a regular basis in recent years as part of the school's curriculum requirements and this has been positively received by the school.
2. Granby Junior School held their own carol service for the school at Holy Trinity last year.

We would like to see both these links grow.

We do regular monthly visits to two Care Homes (Canal Vue and Rutland Manor) and this is much appreciated by both the staff and the residents. There has been some very encouraging and heart-warming feedback in this area of mission: "some are able to join in, some listen, some nod off!! But all are happy to see us each time". "We have one gentleman (100 years plus) who always holds our hands and says 'I cannae see, I cannae hear too well and I certainly can't sing but I love you to come' – it makes it all worthwhile!" We are also currently exploring ways in which we can work together with other churches (of all denominations) in the area to extend this work to other Care Homes, working with Ilkeston Churches Together to take an ecumenical approach to this mission.

We also have a Toddler Group which attracts a lot of interest from the local community and slightly further afield and Helen and Caroline who run this say that "it is full, it is vibrant and fun" and they also say that they have "a deep feeling of God's love working through us reaching out to the families" In addition to those groups, there is also a local Brownie group and a Rainbow group who use the church hall weekly. The Brownies also attend church for their monthly Church Parade and there is a mutual feeling that they are very much part of the life of the parish and part of the church family. We would like to engage more with these groups and to extend our mission in this area to both the children and their families.

The hall itself is advertised as a community facility and we endeavour to get as much use as possible but it is somewhat restricted by the lack of parking. However, we do have a number of events such as children's parties from time to time. It is also used on an ad hoc basis by Derbyshire Carers Association (based in Ripley) for drop-in open coffee mornings for carers and we provide this free of charge to them.

Our organist, David Allen, is involved with Erewash Sound, our local community radio station, and he presents a weekly radio show on Saturday mornings and is helpful in giving some wider publicity to the church when we have special events.

We recognise that it is an important part of our mission ministry to endeavour to reach out to the local community and we are constantly on the lookout for opportunities to improve and develop this further. It has to be recognised however that the parish does not constitute a recognisable and coherent 'community' and this combined with our location makes this challenging but we do remain positive and consider this to be an important area to develop further.

Social activities

We endeavour to have a busy social calendar, organised by a committed Social Committee to help with fund raising, and these are generally very well attended. Our regular events include the following: -

An Advent party shortly before Christmas – a supper and children’s event
Shrove Tuesday Supper
Harvest Supper

We have from time to time considered how we can develop events aimed at the wider community but this has proved to be very challenging. The lack of any tangible community that associates with the church plus our location have proved to be inhibiting factors.

There is a strong Walsingham Cell with an annual pilgrimage to the shrine. This Pilgrimage is done in close co-operation with the Cell at St Laurence’s and also attracts people from other churches, including Methodists and Roman Catholics. The pilgrimages are organised by our Sacristan and Head Server, David Hudson, who has been organising these for nearly 60 years.

A weekly newsletter is produced which goes on our website. This not only acts as a ‘pew sheet’ but gives information about events and developments in the parish. We are conscious of the need to engage with social media and as well as our website we have an active Facebook page. These areas of communication are all dealt with by a dedicated individual and are all kept well up-to-date.

In 2009 we formed a separate charity; Friends of Holy Trinity Ilkeston, to act as a bridge between the church and the community and to raise funds. It runs a Private Members Lottery (and has been successful in raising in excess of £4000) and also features on easyfundraising.com where funds are raised via online shopping.

Parish finance

A brief summary of our financial position for the last three years is given below:

Item	2023	2022	2021
Total income	31497	32571	32245
Giving + tax reclaim	23000	23667	24502
Common Fund requested	23865	23865	23182
Common Fund given	12000	9264	18492
Other expenses	22990	14027	19886
Surplus (Deficit)	(3493)	9280	(6133)
Total of funds held	21139	21343	12143

Full audited accounts can be supplied if required.

For a number of years now our income has been sufficient to meet our outgoings without the need to draw on reserves, which are in any event small. We would like to be able to pay our Common Fund in full but this has not proved possible for the last few years. We are, however, actively seeking to give more and it is reviewed at every PCC meeting.

Some years ago, the PCC and congregation engaged with the second phase of the ‘Giving for Life’ programme and stewardship was addressed in a number of ways. The PCC also adopted the ‘Parish Giving Scheme’ and there are now over 20 people who use this scheme to make their donations to the church. This has resulted in a more consistent cash flow and to that extent has helped to stabilise our finances.

We also have a separate small charity, ‘Friends of Holy Trinity Ilkeston’, which successfully raising funds via a lotter and the [easyfundraising](http://easyfundraising.com) facility. And they have contributed towards the cost of one-off projects such as new notice boards.

Despite our somewhat weak financial position, we place much importance on our own charitable giving and support a number of causes, and also contribute towards diocesan causes.

Our strengths and weaknesses

Strengths

- The maintenance of a regular pattern of worship on Sundays, weekdays and throughout the course of the Church's calendar.
- Dignified worship, with music on Sundays and use of incense, supported by a strong team of servers.
- A loyal and regular congregation.
- Strong support from the laity in all areas
- A strong social programme with good lay involvement.
- A growing involvement from families, young people and children
- A focused outreach group and a growing heart for outreach and mission
- Good links with local schools

Weaknesses

- Despite some growth, there is still low attendance from families and young people (except once a month with Brownies).
- A lack of a real local 'community' and therefore a low profile in the area.
- A challenging geographical location.
- A financial position which needs strengthening.

The way ahead

Whilst the celebration of the mass is central to our life at Holy Trinity, we recognise that we have a wider pastoral mission. We are therefore seeking to develop:

- Developing a clearer vision for the future.
- Growing church attendance combined with spiritual growth.
- Attracting more families and young people and strengthening our relationships with local schools, the Brownies, rainbows and Toddler Group and their families.
- Because boundaries in the parish don't mean a lot to the people who live here, we want to grow in partnership with neighbouring parishes.
- Reaching out to the community especially the disadvantaged. And working to this end in collaboration with neighbouring parishes.
- Raising the profile of the church and working more collaboratively with other local churches in all areas of our life at Holy Trinity.
- Making ourselves more accessible and welcoming – spiritually, physically and digitally.
- Improving our financial position.



St Laurence's Long Eaton

Some information about the area

The town of Long Eaton is located in Derbyshire along the border with Nottinghamshire and has a population of about 37,760. Although the town does have a strong independent character it also identifies with both Nottingham (7 miles away) and Derby (8.5 miles away). Both cities are important regional centres and between them have a wide variety of cultural and entertainment venues, educational establishments and many other amenities.

Long Eaton enjoys easy access to the M1 motorway and there is a mainline station at Sawley but called Long Eaton Station. as well as stations at Derby, Nottingham and East Midlands Parkway. East Midlands International airport is within 20 minutes travelling distance and has a wide range of national and international destinations available. There are good local transport links to both Derby and Nottingham. Although the town is urban and industrial it is surrounded by attractive countryside and the Peak District National Park is about 20 miles away.

This part of Derbyshire has a strong industrial heritage and Long Eaton became prosperous at the end of the 19th century by making the world-renowned Nottingham Lace and it was very much a textile area with many links to the Knitwear and Elastic industries. These traditional industries have now largely been replaced by small manufacturing, service and transport enterprises, but textiles remain mainly in the form of upholstery (with Long Eaton being one of the most known furnishing areas in the Country) and lingerie manufacture. There are large numbers of people who commute to Nottingham or Derby.

The town itself has all the usual facilities, amenities and educational establishments. The proximity of two large cities provides much more. There is easy access to the surrounding countryside including a large country park



The community

The Parish (population 13,487) covers the centre of the town as well as some of the surrounding area. It is both urban and suburban and comes under Erewash Borough Council. St. Laurence's is the Civic Church and we are proud of our links to the Royal British Legion. We are central to the Remembrance Day activities and also hold the Poppy Concert at the start of the Poppy appeal. We are the go-to Church for the Council and we are asked to be the 'wet weather' venue when outside events occur.

Housing in the Parish is mixed and there have been some extensive new developments over recent years.

Long Eaton has a higher rate of homeowners or mortgagees which suggests that the area is relatively affluent.

The socio-economic makeup of the parish is mainly in groups 3 to 7 (as defined by the Office of National Statistics – equivalent to C and D under the previous classification) and there is only a small BAME population. The Parish borders the settlements of Sawley and Breaston.

Being a Parish that includes the town centre, there is good access and close proximity to a range of amenities and facilities:

- St Laurence C of E Primary School, Brooklands Primary School, Grange Primary School.
- A leisure centre with swimming pool, a major Gym complex
- Pubs and a range of restaurants and takeaway establishments.
- Large retail outlets: Tesco Extra, Aldi, Asda
- Many local small businesses
- Long Eaton Park and the Erewash Canal area.
- There is also a small theatre and plenty of am-dram activities within the town.
- The Oasis Church, Methodist and Baptist Churches, United Reformed Church



The church buildings and Churchyard

St Laurence's is a Grade II* listed building and its origins date back to the 11th century. Evidence of these Norman origins can particularly be seen above the south porch door and on many external areas of the building. It was built originally with a flat roof which the Victorians re modelled into the roof you see today. On the inside there is a beautiful Lady Chapel with the main windows featuring St Elizabeth with John the Baptist, Our Lady with the baby Jesus and St Anne with Our Lady as an infant. Across the Church on the North side is the Altar of St George with the high altar facing east between the two. It was originally a chapel of ease for the rural parish of All Saints Sawley. During 1694 there was a great fire in Long Eaton and the Church evolved into the Parish Church with the later additions from the Victorian era.

Inside the Church you will find many artefacts going back to the Victorian era and beyond. There is an interesting brass plaque in the chancel which commemorates the choirboys and girls who died at an early age. The Chancel roof was decorated in 1936 by Wytan Widows and can be seen today although some restoration is needed. The re-build in the Victorian era took place between 1868 and 1869 by the architect George Edmund Street. The North Aisle, Nave and Chancel were added in the same style as the old building. It was re-opened on 26th August 1869.

Although the building is generally in good condition, both inside and externally, the roofing dates largely from the Victorian era and consists of clay tiles and leading and there has been considerable weathering and distortion allowing water ingress. Repairs to the roof problems have now been completed. There is a separate modern church hall within the churchyard with kitchen and toilet facilities which is available for hiring. The Churchyard is closed.





Church life

There are 60 people on the Electoral Roll (2024) of which 36 are non-resident

Worship at St Laurence is dignified and firmly in the Catholic tradition, with Sung Mass at 9.30am as the main Sunday service. The service is based on Common Worship with permitted additions from the Roman Missal and incense is used. The attendance is normally between 20 and 30.

In addition, we have a Mass on Wednesday mornings at 10.30am. Other Masses are celebrated on principal feast days and there is a full programme of services during Lent and Holy Week.

The congregation is mainly middle aged and elderly although there are typically 4 to 6 children on a Sunday. Our 'Worshipping Community' as reflected in our Statistics for Mission report for 2023 is as follows:

Children (0-10)	1
Young people (11-17)	0
Adults (18-69)	16
Adults (70+)	13
Total	30

Music plays an important part in our services and we have a regular Organist, Frankie Storer. We have a Brindley and Foster organ which is now in need of replacement. This can be found on the National Pipe Organ Register.

We have an experienced and dedicated team of Servers.

Occasional Offices during 2023 were as follows: -

Baptisms: 1 Funerals: 1

Home Communion are given on a regular basis both to the elderly in their own homes and in Residential Care

Homes within the parish.
Church activities
Outreach and community involvement
Work with Canaan Trust and food bank

Christmas Tree Festival: which coincides with the Town Christmas Light switch on is for the local community which are very supportive of the event where we often have hundreds of locals coming into the church to see the trees. The Crib service, which is supported by the Long Eaton Silver Prize Band, is also extremely well attended with the church being full to capacity.

Because we are the main town centre church in Long Eaton, with the war memorial located next to us, we are the location for the annual Remembrance Service led by our clergy, and for similar civic events.

Every Friday morning, during term time, the hall is used by a Baby and Toddler Group. This is for young children to come along to before they go off to their Nursery School

We have three schools within the parish:

1. St Laurence C of E Primary School www.st-laurence.derbyshire.co.uk (see below for input from the school). In recent years the school have come to church at Christmas and their end of year service with family members invited too.
2. Brooklands Infant School www.brooklands.derbyshire.sch.uk where we have a good relationship. Many members of our church community have been Governors in the past
3. Grange Primary School www.grangeton.uk

We are regular visitors, including for Home Communion, to a number of Residential Care Homes in the area Long Eaton View Care Home and Brooklands Court, and value our ministry to the elderly which extends beyond the parish to members and connections of our church community.

The church hall is available for hiring for individual community and other purposes and has been booked on some occasions by market research teams. We recognise that it is an important part of our ministry to reach out to the local community and we are constantly on the lookout for opportunities to improve and develop this further.

Social activities

We endeavour to have a busy social calendar, organised by a committed Social Committee to help with fund raising. Our regular events include the following: -

Christmas Concert
Harvest Supper
Christian Aid Breakfast
British Legion Poppy Appeal Concert

There is an annual pilgrimage to the Walsingham shrine and is led by one of the clergy team.

We are conscious of the need to engage with social media and as well as our website www.st-laurence.net (in need of an update) we have an active Facebook page for the Church St Laurence Church Long Eaton A weekly Pew sheet and news is produced which goes onto our website.

We also have a Cleaning and Maintenance group who look after the tidying and cleaning of the church and ornaments and the provision of flowers.

We endeavour to focus on events where there can be some wider community involvement and this is something we need to develop further.

St Laurence Church of England Primary School: from Mrs Ronni Barker, Executive Headteacher

The school is part of the Derby Diocesan Academy Trust and has 166 pupils. They describe themselves as, “Friendly, happy to learn, fun and hard working. We really like coming to school”.

Learning about virtues and values is a very important to us. This is a strong part of our school culture as we talk about the values in our Collective Worship, in lessons and throughout the school day, thereby embedding such values as part of our every day life.

Because this is a church school there have, of course, been very close links and excellent relationships with the church, and past Vicars have been school Governors. There has always been regular contact with the school with previous Vicars leading worship and working closely with the Executive Headteacher who is also the RE lead. There was an Ofsted Inspection in December 2021, and the outcome was an Ofsted rating of ‘Good’. The entire school is very proud of this.

The pupils of St Laurence Church of England Primary School have made a contribution to this section. They were asked what sort of a person they would like to see as the next Vicar at St Laurence Church, and the feedback is given below: -

Children’s Comments from St Laurence Church of England Primary School

A group of 10 children met with me, Mrs Barker when I explained that the church was ‘trying to find a new vicar’ at church and that this would be someone who would also come to our school. I asked for their thoughts and ideas.

- Someone that is a happy, nice, kind person.
- Someone that likes working with children.
- Someone with a sense of humour.
- A Vicar that listens to us and likes coming to our school.
- Someone with a kind heart who doesn’t mind getting involved with the school and the children.
- Someone who is interested in what we do at school and asks about what we learn.
- A Vicar who is exciting and makes Collective Worship fun so that you look forward to them coming in.
- A Vicar who leads Collective Worship so that children have the opportunity to get up and help and to join in.
- We want to learn but Collective Worship should be interesting. So, we would like someone that helps us to learn about God in an interesting way.
- Someone who will spend some time at our school and get to know us.
- We would like a new vicar to be interested in us and someone we can talk to.
- Someone who is willing to visit us and come round and see what we are doing in our lessons, see how we’re getting on and take an interest in our learning.
- Someone who could sometimes come into our class and read us a bible story or talk and have discussions in our Class Reflection Areas. We felt that the school needed someone that we could get to know and who would take an interest in the children: their lessons, their learning and their achievements. We need someone who understands and wants to learn about our community.
- We would like the new vicar to be visible around the school and for people to have opportunities to ask relevant questions. Though children understood the importance of being part of the church and that on many occasions teaching and services should be serious, they also wanted interactive (and fun) services so that they could feel part of the learning (where appropriate).

Parish finance

A brief summary of our financial position for the last three years is given below:

Item	2023	2022	2021
Total income	39480	42974	50071
Giving + tax reclaim	30545	35715	40133
Common Fund	13500 (£29403)	16500 (£29403)	18000 (£27848)
Other expenses	20138	31314	41478
Surplus (Deficit)	5842	8324	10483
Total of funds held	63462	56047	70076

The common Fund amounts in () are the recommended amounts from the Diocese.

The last couple of years we have underpaid. To pay towards our roof Valley gutters repairs (£90,000)

From the Treasurer's Report as of 31 December 2023

Joan Summers Fund £24540.24
Organ fund £11169.90
Education fund £11902.56

There has been some decline in both the regular giving and in our total income during the last few years and we would largely attribute this to the age profile of our congregation and to people leaving for a variety of reasons, but we remain conscious of the need to improve our overall financial position generally and we are looking into various ways of approaching this.

We have recently increased the monthly amount given to the Common Fund and we have been working with the Living Generously Adviser at the Diocese to try to increase our regular giving. We are also currently working to recoup Gift Aid from recent years.

Full audited accounts can be supplied if required.





Our strengths and weaknesses

Strengths

- The maintenance of a regular pattern of worship on Sundays, weekdays and throughout the course of the Church's calendar.
- Dignified worship, with music on Sundays and use of incense, supported by a team of servers.
- A loyal and regular congregation.
- Strong support from the laity in all areas
- A strong social programme with good lay involvement.
- The Church being in the centre of the Town – we need to realise this potential
- Being involved with community events
- Having a Church School to work with

Weaknesses

- A financial position which needs strengthening.
- We need to see more involvement from families and Young People.
- We need to strengthen our Ministry and Mission, which will hopefully be guided by a new Priest.

The way ahead

Whilst the celebration of the mass is central to our life at St Laurence, we recognise that we have a wider pastoral mission. We are therefore seeking to develop:

- Our Church and community work: reaching out especially to the disadvantaged.
- Attracting more families and young people and local groups such as the Brownies and Guides.
- Continue work with Canaan Trust and food bank.
- Care Leaders: co-ordinate care of the congregation, not just in times of illness.
- Raising the profile of the church.
- Improving our financial position.
- Using the Church Hall for local groups and Mission work and outreach
- Working with and getting to know our neighbouring Parishes (All Saints, Sawley and St. John's, Long Eaton). The Vicar at St. John's (Rev Sam Tredwell) has supported our link with St. Laurence School during the vacancy.

We are very much looking forward to working with a new Incumbent to help us achieve our vision, hopes and aspirations for the future.

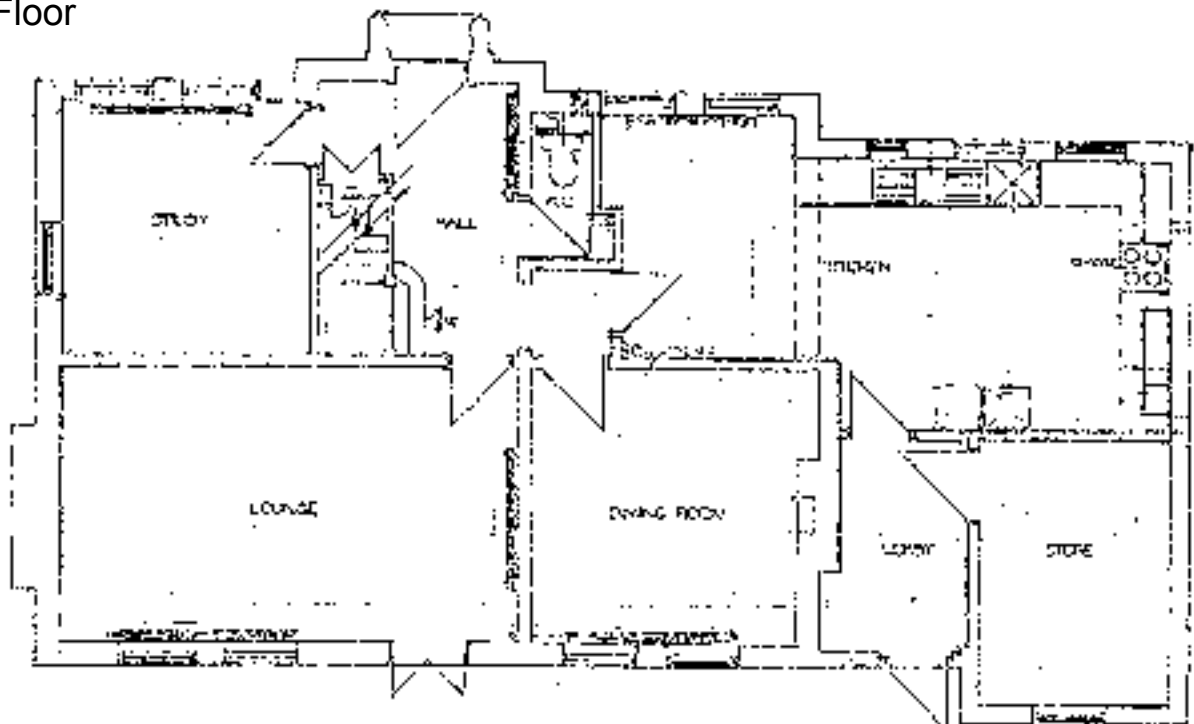


Vicarage

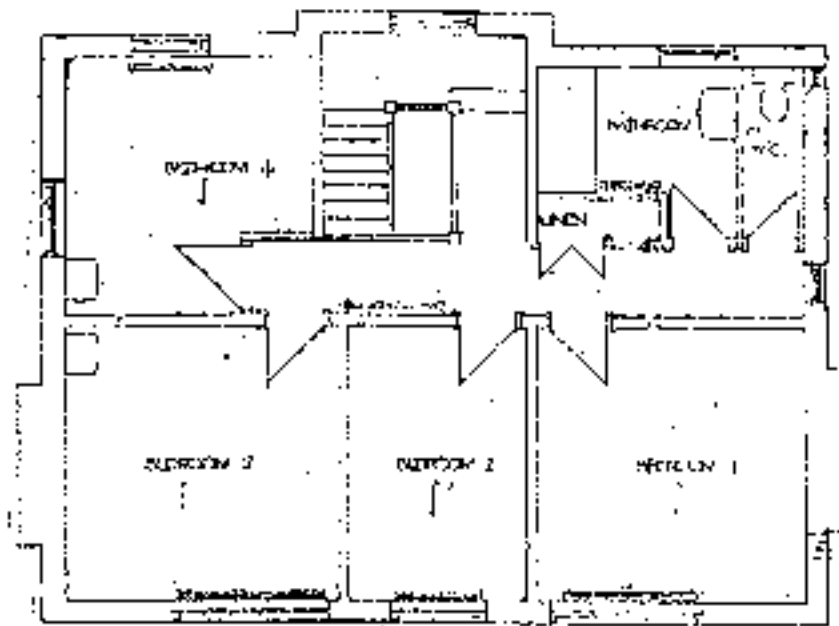
St. Laurence's Vicarage Currently at: The Vicarage, Regent Street, Long Eaton NG10 1JX

We would like to consider re-locating the Vicarage at some point but have been unable at this stage to find a suitable property.

Ground Floor



First Floor



Thank you for reading this profile. We very much look forward to hearing from you and will be happy to supply any further information you may need.

If you have any specific questions or would value an informal pre-application conversation then please contact:

Ven Karen Hamblin, Archdeacon of East Derbyshire
karen.hamblin@derby.anglican.org 07496 823404

Be assured you are held in our prayers as you discern whether God might be calling you to this role.

This post is subject to an enhanced DBS check.