

April 2026



Priest in Charge

St John's, Walton



Transformed Lives | Growing Church | Building Community
THE KINGDOM OF GOD - GOOD NEWS FOR ALL

Welcome

Thank you for your interest in our ministry opportunity here at St John's and St Peter's. We are already praying that God will be leading the right person to join us – someone who loves Jesus deeply, is rooted in his Word, and is passionate about seeing others come to know and follow him.

We are a vibrant evangelical church family, across two churches, with a mission 'to know Jesus and make him known'. We are looking for someone with the skills and experience to lead us as we continue to evolve and grow, and who will share our heart for Christ and his kingdom.

We are lively, friendly and welcoming, with many talented people and a range of worshipping styles. We have well-established ministries serving our more senior members and are looking to strengthen and develop our work with children, young people and families.

At St John's, we have a busy parish centre, with a wide-ranging programme of activities – some church-based and others serving the wider community. In recent years, we have expanded our outreach with the development of the Acorn Community Garden on land adjoining the church.

At St Peter's, a small church family based in the village of Holymoorside, we are committed to our faith and serving the wider village community.

We hope that in this profile you will find all that you need to apply for this post. However, if you require any further information, please do not hesitate to get in touch. Contact details are provided on the last page. You can also take a look at our annual report: [A year in the parish of Walton St John & St Peter Holymoorside Jan -Dec 2025](#)

Who we are

We are a loving, prayerful church family, seeking a incumbent who will walk with us as we grow in faith, unity and mission. We value Bible-based worship and a genuine dependence on the Holy Spirit. Our congregations have a strong willingness to share ministry: people are ready to serve, develop their gifts, and work within healthy teams and clear structures. We are rooted in the life of our communities, with existing connections through our buildings and local groups, and we are eager to become more outward-facing in welcome, discipleship and outreach.

The Venerable Matthew Trick

Acting Archdeacon of East Derbyshire



Thank you for your interest in this significant and hope filled role as Priest in Charge of St John's Walton with St Peter's Holymoorside. It comes at a moment of real opportunity for the parish, for the deanery and for the wider Diocese of Derby.

One of the great encouragements in working with the parish during this vacancy has been encountering its healthy culture, prayerful foundations and evident desire to grow. There is much here to celebrate: a warm and committed church family; a clear love for Scripture and worship; thriving seniors', children's and families' ministries; deep community engagement; strong team leadership; and a breadth of gifts offered by clergy, lay leaders, volunteers and congregation members alike. The parish has worked carefully and transparently in shaping this profile, listening well across its congregations, and demonstrating a striking level of self awareness, humility and readiness for the next chapter.

Alongside these strengths, there are important missional opportunities. St John's has long lived out a generous evangelical vision rooted in "knowing Jesus and making Jesus known". Its established ministries, the beautiful Acorn Community Garden, the parish centre's rich connections with local groups, and an appetite for deeper discipleship all form a strong foundation for future growth. St Peter's, though smaller, plays a highly valued and distinctive role in the life of Holymoorside, offering faithful worship and committed pastoral presence in its village setting.

In this context, the parish and I have also begun a wider conversation about the long-term potential of St John's becoming a resourcing church—a church that forms planting curates, develops leaders, and helps revitalise ministry in neighbouring contexts. The PCC rightly recognises both the potential and the need for pacing: this is a longer term aspiration, requiring prayer, discernment and the right resourcing. Yet the vision is already present, rooted in St John's own history of being planted, and there is a sense that God may, in time, be inviting this parish to become a place that gives itself away for the sake of others.

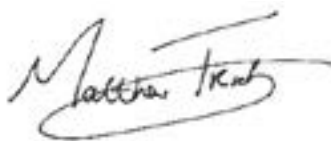
Another key opportunity lies in the pastoral reorganisation that will, over the coming years, bring St John's Walton and All Saints Wingerworth under a single incumbency. Following consultation with both PCCs, the revised plan is intentionally phased. St John's will appoint its own priest-in-charge now, while Wingerworth receives a full-time priest-in-charge for a fixed three-year period. After that, the incumbent of St John's will become the shared incumbent of both parishes. This approach honours St John's desire to sustain momentum in its appointment, acknowledges the limited current relationship between the two parishes, and creates space for trust and partnership to

develop well. The formal pastoral scheme will take some time but the direction of travel is clear: this is a post with a secure future and a wider calling to steward two communities into greater collaboration.

There are, of course, challenges—financial pressures shared across the diocese, the need to nurture ministry with children and young people, the work of deepening governance structures and clarifying rhythms and expectations, and the task of discerning priorities amid rich possibilities. Yet these challenges sit alongside a parish that is hungry for vision, eager for wise and collaborative leadership, and committed to supporting its new incumbent with prayer, openness and genuine partnership.

We are praying that God will call a priest who loves Jesus deeply, listens well, cherishes Scripture, and delights in enabling the whole people of God to flourish in ministry. Someone patient, discerning and hope filled; someone who can build on strong foundations while leading gently into new territory; someone ready to embrace both the immediate joy of serving St John's and St Peter's, and the longer term task of shaping the future relationship with Wingerworth.

If you sense that this might be a context where God is calling you to serve, I warmly encourage you to read on—and to pray with us for the next stage of this parish's life and witness.

A handwritten signature in black ink, appearing to read 'Matthew Trick', with a stylized flourish underneath.

The Venerable Matthew Trick
Acting Archdeacon of East Derbyshire

St John's and St Peter's in 2025



149

people on average attend our Sunday services each week



80

people are on our weekly prayer chain



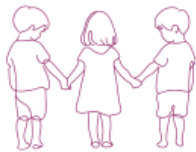
28

community groups hire our building each month



43

people on average attend our Tuesday service each week



25

children on average come to our Little Fishes play group each week



6

community groups for seniors are run each month



270

attended church on Easter Sunday



6 baptisms

3 weddings



13 funerals



15

people attended
Alpha in 2025



101

people attend home
groups each week



2100

meals on average
served each year at
our Tuesday lunch



100%

of common fund paid



75

hours of practice by
our band each year



4K

views on our Facebook
page each month



£189,000 income in 2024

£179,000 expenditure in 2024

£12,500 donated to charities in 2024



St John's Walton

9am Parish communion

Following parts of the Common Worship Order 1 Communion Service in our own printed order of service books, the 9am is the most traditional service that St John's offers. The service is a much-appreciated and greatly-valued aspect of our provision of public worship. An average of 40 people attend this service each week. Attendees are mostly in the age bracket of retirees, but sometimes there are younger attendees too. Families with children do not usually attend this service.

The 10.45 service

This service brings together a vibrant mix of people from all ages and backgrounds. The worship (with music led by a worship band) follows a monthly pattern which includes all-age worship and a quarterly 'Explore together' service. An average of 80 to 100 attend this service each week. The congregation is multigenerational, with no predominant age profile. However, there is a heartfelt desire to grow the number of families and children in our midst.

Just be

Just be is an informal gathering which provides the opportunity to step away from the busyness of life and 'just be'. It's a simple time of worship, prayer and reflection. It is attended by 8-20 people each week. The age range is diverse but attracts a higher percentage of young professionals than other services. Tuesday worship This service attracts between 30 and 40 people a week and is followed by a simple, two-course lunch. This provides an opportunity for people to connect, share stories and support each other. The general age profile of those attending is the older age of the spectrum.

Seniors' ministry

At St John's we have a thriving seniors' ministry, ably led by a committed team of volunteers, who last year won 'Team of year' at the Chesterfield and North Derbyshire Voluntary Sector Awards.

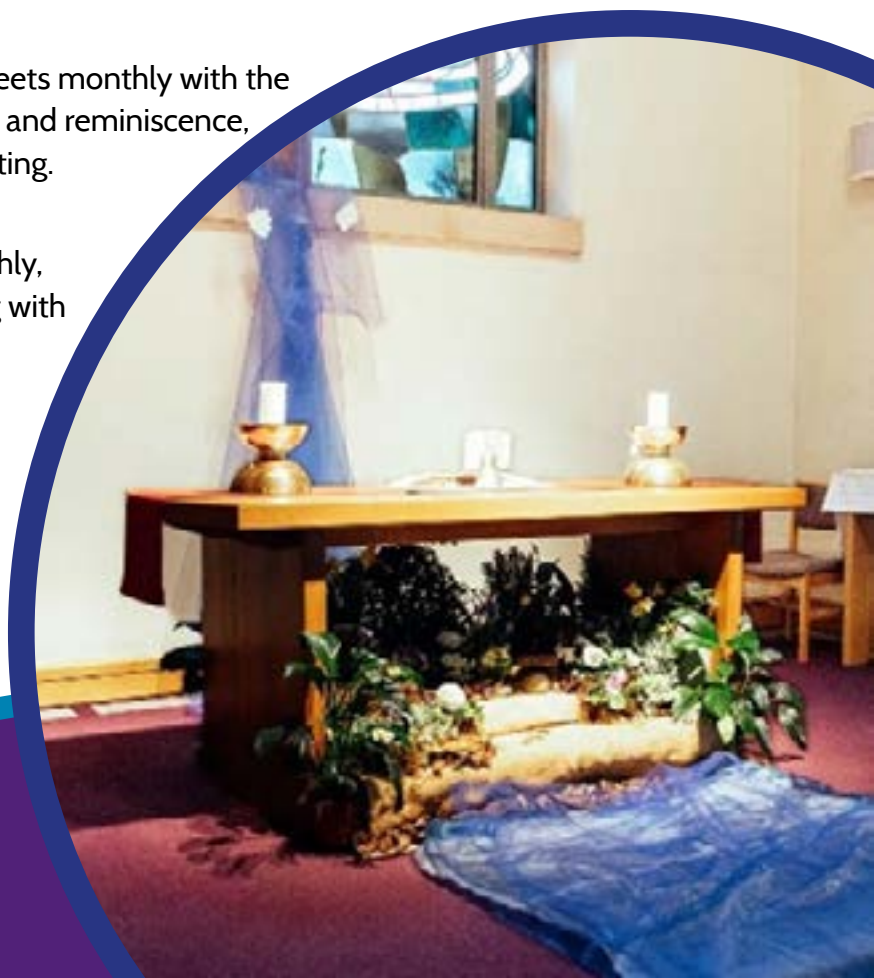
Cameo: 'Come And Meet Each Other' meets weekly throughout the year and enjoys a varied programme of events, which have included an antiques valuation, a murder mystery, talks on a variety of topics – and even Caledonian dancing!

Charis choir: The Charis choir is 12 years old, and for all of those 12 years, it has been taking the gospel message, in song, to various care homes around Chesterfield. Everyone that sings in the choir considers it a privilege to sing the good news that is Jesus.

Let's get active: The 'Let's get active' group meets twice a week with the aim of keeping our seniors fit and healthy, whilst providing social contact, friendship and fun. One group is for chair-based exercise and the other concentrates on standing, strength and balance. The groups are affiliated to the 'Stay stronger for longer' programme, and all the instructors are fully trained and regularly assessed to ensure standards of delivery are met.

Writing for wellbeing: This group meets monthly with the aim of providing an opportunity for discussion and reminiscence, friendship and fun through the medium of writing.

Down memory lane: This is a monthly, social singing group, primarily for people living with dementia and their carers.



Children and families

We are so blessed at St John's with children and young people who are an integral part of our church family, along with a great team of leaders and helpers. Our aim is to see Jesus in them, serve Jesus through them, and show them his love and kindness.

Little Fishes toddler group

Little Fishes is a thriving and much-needed community for local families to come together and make connections with other families. Numbers remain at 25 children a week, with a waiting list.

Sunday mornings

We have provision for children of all ages in creche, Sunday club, SWAG (Saved With Amazing Grace) and Big Tig. These groups are run by committed volunteers who meet regularly to plan, pray for and serve the children and young people of the church. In addition, there are a team of prayer warriors who are committed to praying for the children and families of St John's.

Young people

We have a group on Sunday evenings that meets twice a month for older teenagers. We have also run Youth Alpha on Sunday evenings and will run this again as needed.

Family lunches

St John's hosts a family lunch after the 10.45 service approx. four times a year to build connections between young families and the church.



A typical week at St John's Walton

(w/b 23 March 2026)

Day	Church activities	Community groups
Monday	Let's get active PCC Meeting / Standing Committee	Rockbox fitness class Newly bereaved support group Brownies Guides Minerva Choir
Tuesday	Tuesday worship Tuesday lunch Lent Course Eco group meeting Tuesday evening prayer	Bereavement group drop-in Brownies Rainbows Church on the bus meeting Pilates
Wednesday	Memorial Service Lent Course / Alpha	Pilates 1 Pilates 2 Rock Choir WI meeting Cello Lessons Rainbows JH fitness Honeybelles choir
Thursday	Little Fishes toddler group Music group practice	Brownies Rockbox fitness class
Friday	Let's get active Home Group	Health with Helen Chair-based exercise Recorder group
Saturday		On Broadway dance class Party
Sunday	9:00 Parish Communion service 10:45 Worship Sunday club / SWAG/Creche Youth Alpha 7:30 Just Be	

Acorn Community garden

Both St John's and St Peter's churches are growing more convinced that caring for the environment is not a side issue, but a gospel imperative, and as such it's part of the mission of the church.

One of the most vibrant signs of this commitment is the Acorn community garden - a growing project that has quite literally rooted itself at the heart of our church and local life. It's more than a green space; it's a living parable. Together we have built a sensory garden, a prayer labyrinth and herb beds. The garden has united our community in a shared purpose: to steward this patch of earth well, growing people as well as flowers.



Prayer life

St John's values prayer as an important part of its worship. We have a prayer circle, through which prayer requests are circulated across congregations and around the whole church community. A small group of faithful pray-ers meet every Tuesday evening to pray for the church, the local community and the world. And prayer ministry is offered after the 10.45 service each week, where members of the congregation are able to share prayer requests in confidence and without judgement or criticism.

World mission team

This team has recently re-formed and is working at improving the profile of world mission in the church and at developing links and synergies between world mission and other church-based activities, such as the environment.

Eco group

The eco group meets bimonthly and is working towards gold on the Eco Church survey (having already attained bronze and silver status). The survey provides a framework to support churches to take step-by-step practical action on caring for creation. Some of the church's regular activities include litter picking, RPSB Big Garden Birdwatch, Earth House and Fair Trade fortnight.

Everyman

This is our men's fellowship group which meets for breakfast and outings.

#lastfriday

This is our women's fellowship group which meets monthly, offsite, on the last Friday of each month.

Home groups

Home groups are a vital and cherished aspect of belonging to the St John's church family. Currently, there are eight home groups that meet either weekly or every two weeks on weekdays, with group sizes ranging from 9 to 19 individuals. Two of these groups convene during the day, while the others hold their meetings in the evenings. Most gatherings take place in members' homes, except for one that meets at the church. These home groups offer a wonderful opportunity for fellowship, prayer, studying God's word, learning from one another, and nurturing our relationship with God.

Alpha

Alpha is run twice a year at St John's so that the church family are always aware that a new course will be held soon. Some of our new members at St John's have come through Alpha having received a warm welcome from everyone. Home groups provide light suppers and refreshments, and dedicated volunteers and leaders run the sessions.





St Peter's Holymoorside

Sunday services

We have a traditional weekly Sunday morning service at 9.30am, usually led by a member of the St John's ministry team. Our sung worship uses songs from Mission Praise accompanied by a keyboard, and we always share in refreshments afterwards. On the first Sunday of each month, we share our morning service with Holymoorside United Reformed Church, alternating between our church building and theirs.

Church family

Our church family is small, with a weekly attendance of 12-14 people, but we are committed to our faith, to one another and to maintaining our church and churchyard in order to serve our wider village community. We regularly visit those members of our church family who are now housebound, offering home communion.

Our ministry

St Peter's Church is located in the village of Holymoorside, which is just outside the town of Chesterfield. The church has been part of the parish of Walton St John since 2022, having previously been part of the parish of St Thomas, Brampton since 1841. Holymoorside is a rural village of approximately 1,500 residents, formerly involved in the cotton-milling industry. It has a primary school, two churches, a village hall and two pubs. St Peter's is valued as the Holymoorside village church. Baptisms, weddings and funerals are held at St Peter's, as well as special services for St Peter's Day and harvest, plus an annual memorial service.

At Christmas, we have nine lessons and carols, a nativity service and a midnight mass service. Together with the URC, we create Easter and nativity tableaux annually at the village well dressing site. We have services of blessing for these, as well as a service of blessing in well-dressing week, accompanied by the village brass band. The brass band also accompany our annual Christmas Eve outdoor carol service at the village hall (an annual part of village life since 1972 and attended by 200 people last year) and the annual outdoor Remembrance Day service.

We have an annual harvest supper in the village hall, go carol-singing around the village and this year have hosted three 'Crafternoon' events for younger children, where they have taken part in themed craft afternoons, accompanied by cake for the parents! The graveyard is an important connection to the village. People from the village regularly visit it and their loved ones who are resting there. Its maintenance has been a source of contact with the Parish Council, who have supported it with grants.

Those who attend the church feel a strong connection to the church family. Worship is planned across the parish, with the help of the ministry team, who may take any of the three Sunday services, based on rotas, which are drawn up by the church office. They value the intimacy of the worship space. While still small, the church family is slowly growing. The church prays that families will join them, bringing in children. St John's and St Peter's have worked together on this vision by organising craft afternoons for families in the parish, forming a bridge between St John's and St Peter's, which have been well attended and valued by the families who have joined us.



Governance

The Parish has one PCC, which represents both St John's and St Peter's. There are two churchwardens. Considerable responsibility is delegated to the churchwardens, who have traditionally had regular meetings with the incumbent regarding any matters related to the leadership and running of the parish and to whom tasks are delegated as a result.

The churchwardens line-manage the employees and ensure that maintenance is carried out (together with a small team of volunteers). They (or deputy wardens) are present at all the services: they open the church and, together with the sidespeople, prepare the church for services.

During the vacancy, the churchwardens have taken the role of the incumbent in all decision-making. This has been well understood and respected by the church family.

We have teams of people who are on a revolving rota system who serve as readers and intercessors. For all-age worship at St John's, we have teams who support with the preparation and delivery of planned activities. There is a prayer rota for after the 10:45 service each week. Coffee/tea and biscuits are offered after all services and there are rotas for this, too.

The PCC meets monthly. Membership of the PCC is open to those from across the two churches in the parish. Currently (during our vacancy) the PCC is chaired by the vice-chair, who is the treasurer at St Peter's. The churchwardens are members at St John's.

St Peter's has a DCC, with its own membership. The DCC is chaired by the incumbent but during the vacancy has been chaired by the churchwardens (alternatively). The DCC meets less regularly than the PCC. The incumbent and churchwardens are valued by the DCC. There is an excellent relationship in decision-making between the two churches, which has continued during the vacancy.

In both the PCC and DCC responsibilities are defined, with individuals taking on specific roles: treasurer, secretary, health and safety etc. We also have diocesan synod representatives. We have one parish safeguarding officer. Matters pertinent to St John's are discussed at the PCC. Unless required for a specific reason, the DCC at St Peter's discusses and makes decisions for St Peter's church.



Ministry team

We are privileged to have an active and able ministry team. The team includes: two retired, ordained priests; two (retired) non-stipendiary priests and one reader. We also enjoy input and contributions from a retired URC minister. We have three members who are at different stages in the process of discernment.

At the time of writing we have a curate, who is spending the last three months of her training with us. Curates have been positive and important contributors to the life of our parish over the years.

The ministry team has historically had regular meetings with the vicar, discussing the choice of preaching themes and sharing the responsibility for leading services. The team has taken the responsibility of leading our worship over the time of the vacancy and are meeting regularly with the wardens to plan our rotas.

During the vacancy, the churchwardens have had responsibility for the work of the ministry team. Meetings have been chaired by one of the churchwardens, who have been responsible for ensuring that all Sunday services have been planned for. The ministry team work well together and with the churchwardens. They have been flexible and generous in the use of their gifts for the work of the parish. To date, it has not been necessary to ask for any external help to lead our Sunday services.

Staff team

We have two paid employees: a full-time administrator and a part-time caretaker. They have both worked for the church for a number of years.

Living in love and faith

It is important for applicants to note that the parish has not addressed its response to 'Living in love and faith'. This would be an important consideration for any candidate to explore.



The church buildings

The parish has two churches: St John's which is located on the edge of Walton, alongside Matlock Road; and St Peter's which is in the adjoining village of Holymoorside.

St John's

St John's is a modern, purpose-built church with an adjoining parish centre. This replaced a small village church when the congregation grew substantially. The church was completed in 2006, through sacrificial giving and some small grants. It seats 200 people, in a modern and comfortable well-lit flexible worship area with associated sound desk, loop and projector system. A modern church hall was built in 1992 next to the old church, as a shared facility with neighbouring churches. In 2010, this was linked to the new church with an atrium and additional meeting rooms. At the same time the kitchen was enlarged to provide high-quality facilities. This now forms a parish centre, which is used by church groups and the wider community throughout the day. There is a generous car park, which is highly valued by users of the church and parish centre and links to the adjoining community garden. There are a south-facing churchyard and memorial garden for the internment of ashes.

St Peter's

St Peter's is a lovely stone-built building dating from 1841. Originally built as a Sunday School, it has been extended and refurbished over the years. In 1999, the church underwent significant renovation but retains its traditional rural charm. The main body of the church has pews though these are movable. There are also a useful meeting room, small kitchen, vestry and toilet. The parish also owns a house that is currently privately rented, the proceeds of which help support mission work in Holymoorside.

Parish centre

St John's has many additional rooms that can be used by the church or hired out to the community. The church centre, comprising a hall and a meeting room (the Waddington Lounge), was built in 1992; then in 2010 another three meeting rooms were built. Rooms 1 and 2 have a movable wall, enabling the two rooms to convert into one larger room, seating up to 60 people. Room 3 is equipped with a sink, toddler toilet and enclosed outdoor play area, and is primarily used for children's activities and adult craft sessions.

A large number of community organisations use our space including pilates, fitness groups, uniformed organisations, the Parkinsons society, WI, choirs, music groups and craft groups. We are also host to many birthday parties and concerts. A small number of businesses use our rooms for meetings and networking. These activities all fit around our own groups. Last year, £26,000 of revenue was generated by room bookings which was used to help cover running costs.



Who are we looking for?

As a church family, we have spent the last couple of months discerning the profile of the incumbent we are seeking, identifying key priorities for the role and considering what we can offer a new incumbent. This process involved a questionnaire, which received 84 responses, as well as focused discussions with the children in Sunday club, and with adults in house groups and small groups after church services. A designated group then reviewed the responses and drew together the summary below.

Purpose of the role

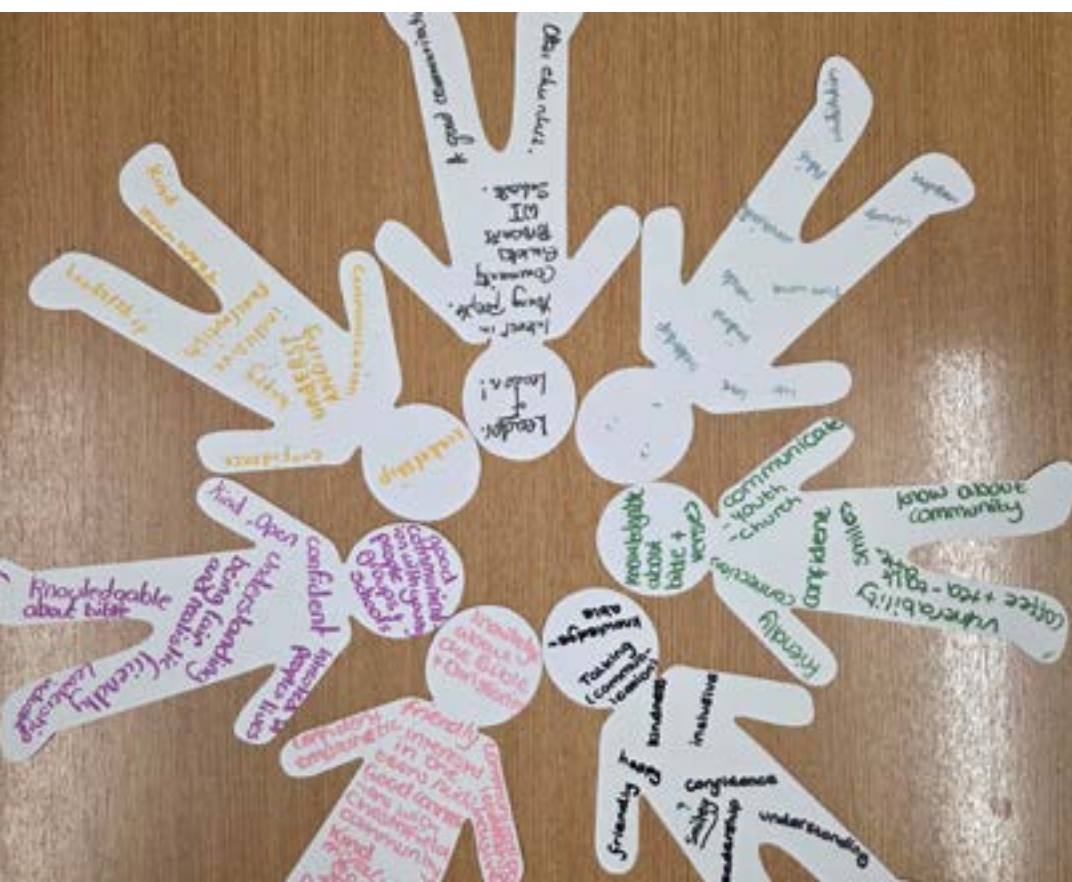
To serve as incumbent of St John's Walton with Holymoorside, offering prayerful, Bible-based leadership that nurtures worship, discipleship and pastoral care; develops lay ministry and teams; and strengthens our mission and presence across the parish and wider community.

Spiritual and personal qualities

- Prayerful and grounded, listening for God's leading and committed to discernment and prayer.
- Emotionally mature and open in appropriate ways, modelling a real and healthy Christian life.
- Willing to ask the church family for support.
- Clear about their calling to this role and eager to deepen their own faith and the faith of others.
- Resilient and self-aware; able to set healthy boundaries, ask for support and look after their well-being.

Leadership and vision

- A collaborative leader who helps others grow, spots gifts and encourages ministry across the church.
- Able to develop a shared, Spirit-led vision for the parish, with thoughtful long-term planning.
- Wise and discerning when reviewing ministry, seeing what's working and what needs to change.
- Patient—willing to listen, learn and understand the church before making major changes.
- Able to lead and coordinate teams, with clear roles, accountability and healthy ways of working.



Preaching, teaching and worship

- A clear and engaging communicator, offering Bible-based teaching that helps people grow.
- Preaches in ways that are relevant, well-grounded and varied to suit different people.
- Values our worship patterns and leads sensitively towards growth and unity.
- Committed to discipleship and spiritual growth for people of all ages.

Pastoral care and relationships

- Warm and approachable, able to build trust across the parish.
- Shows compassion and listens well, offering sensitive pastoral care.
- Able to handle disagreements with grace and help a diverse church stay united.
- Visible, available and engaged in the day-to-day life of the church.

Communication and administration

- Communicates clearly and kindly, so people feel informed, heard and valued.
- Able to share information well with the whole church and its groups.
- Organised, able to set up and keep clear communication across the parish.
- Confident with written, spoken and digital communication.

Engagement with children, families and community

- A clear heart for children, young people and families, helping these ministries grow.
- Builds strong relationships with other churches, community groups, schools and building users.
- Helps our worshipping communities connect and grow in unity across services.
- Encourages mission, helping the church be a visible and joyful presence in the parish.
- Handles different theological views with sensitivity.

Teamwork, delegation and ministry development

- A team-builder who helps people find and use their gifts.
- Delegates clearly, with the right support, encouragement and accountability.
- Invests in training and developing ministry teams, home groups, pastoral groups and volunteer leaders.
- Puts structures in place so ministry can grow without overloading people.

Safeguarding and safer recruitment

- Committed to safeguarding children, young people and vulnerable adults, and to creating a culture of safety and respect.
- Willing to undertake all required safeguarding training and to work within diocesan and Church of England safeguarding policy and guidance.
- Understands the importance of safer recruitment and appropriate boundaries, and models good practice in leadership and pastoral ministry.
- Able to respond appropriately to safeguarding concerns, including recording and reporting, working with the Parish Safeguarding Officer and statutory agencies as required.

Summary statement

We are seeking a prayerful, Spirit-filled incumbent, rooted in Scripture, who will listen well, lead wisely, communicate clearly, and walk with us as we grow in prayer, faith, unity and mission.

Key tasks for our new incumbent

- Provide prayerful, Bible-based leadership.
- Lead the church in discernment and shared vision.
- Support and develop ministry teams and lay leaders.
- Delegate effectively and ensure clear structures with accountability.
- Ensure that compassionate pastoral care is offered across all ages.
- Be a visible, approachable presence in church and community life.
- Preach clearly and accessibly, nurturing spiritual growth.
- Build opportunities for connection between our churches and congregations.
- Ensure clear, transparent communication across the whole church community.
- Strengthen engagement across all age groups.
- Build relationships with community groups, schools and organisations.

What we can offer our new incumbent

A prayerful, supportive, and loving church family

- A loving church committed to praying for and with their incumbent.
- People who want to journey with their leader, not just be led.
- An environment in which vulnerability and authenticity are valued.

A willingness to work together, not leave everything to the incumbent

- Many gifted members ready to serve.
- Openness to delegation and team structures.
- Lay leaders who want to grow in responsibility.
- A congregation that believes 'one person cannot do it all' and wants collaboration.

A stable, gentle start – not pressuring for immediate change

- Time to listen, learn, and settle.
- No expectation of sudden changes.
- Space to understand the strengths and weaknesses of the church before acting.

A church that wants to be known and wants to know their incumbent

- A congregation excited to build genuine relationships.
- People who appreciate being known personally.
- A desire to grow together as God's family.

Clear commitment to pastoral care and wellbeing

- Concern for the incumbent's own mental health and resilience.
- Recognition that their family should not be overburdened.
- A desire to ensure the new incumbent is 'fed as they give out'.
- Understanding that the incumbent must also rest, recharge and set boundaries.

A desire for spiritual growth – not just maintenance

- Hunger for deeper faith, discipleship and biblical teaching.
- Openness to guidance from the Holy Spirit.
- Members who want to discover and use their gifts.
- A readiness to engage in prayer, home groups and ministry teams.

Practical stability and established rhythms

- Established services that people value.
- Familiar patterns of worship and community life.
- Strong existing networks in the local community and among groups using our building.
- A congregation that appreciates clarity and good communication.

A church that values good leadership and will follow it

- A church family ready to support their leader.
- Openness to being guided with kindness and clarity.
- Appreciation for collaborative decision-making.
- A desire to nurture unity and avoid cliques.

A vision-hungry, hopeful community

- Desire for a clear vision.
- Appetite for a 5-year plan.
- Openness to mission, outreach and discipleship.
- Willingness to address big issues with sensitivity and grace.

A commitment to their success

- Support for good structures.
- Assistance with administration.
- Help to build communication pathways.
- Assurance that the incumbent will not be left isolated.



Vicarage

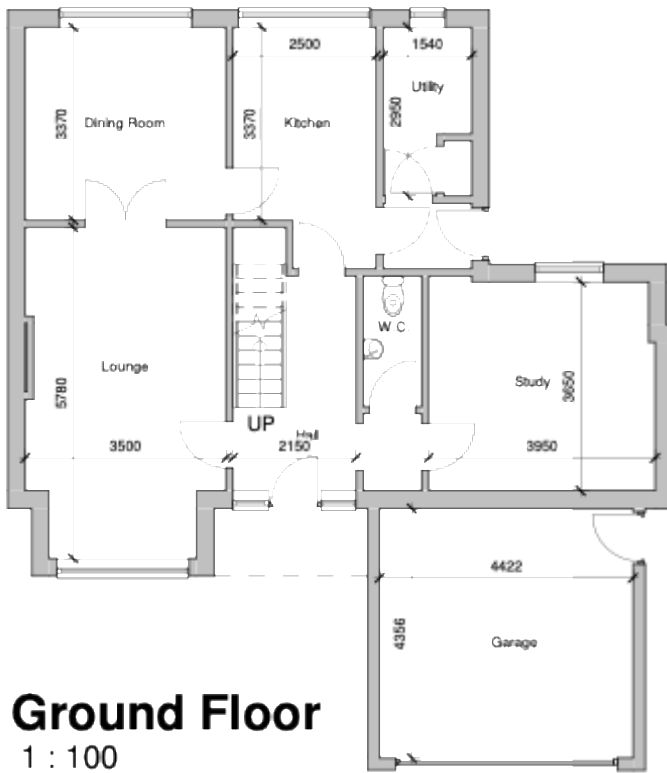
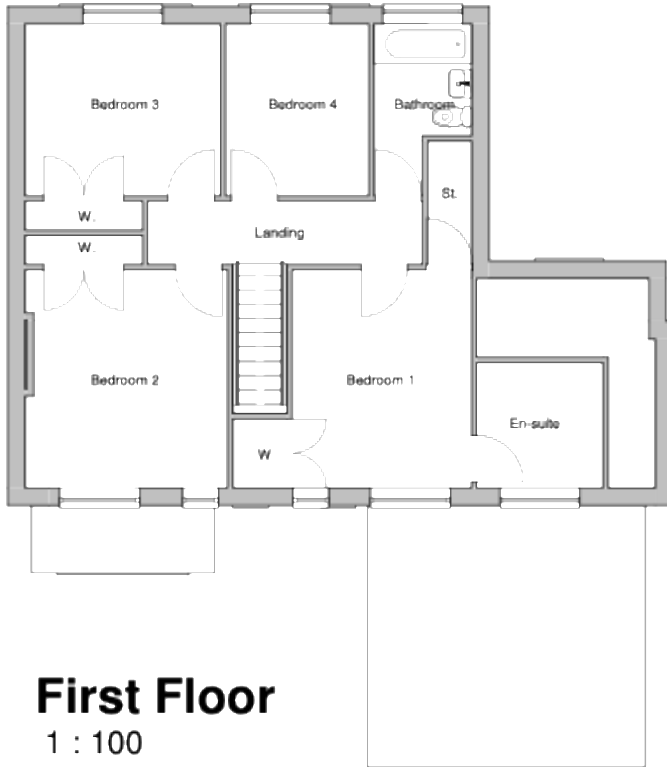
The vicarage is a large extended four-bedroom, detached house with a double garage. It is situated approximately one mile from St John's on a quiet road, in the middle of an established residential estate in Walton. The house, which was built in the early 1980s, has gas central heating and is double glazed throughout.

On the ground floor there are two reception rooms, a large study, kitchen and utility room, as well as a downstairs toilet. Upstairs is the master bedroom with ensuite, together with three further bedrooms, most with built-in wardrobes, and a family bathroom. Outside there is a large double garage.

The property is well maintained and has recently had new fascias and some other updating works. It also benefits from a newly installed electric vehicle charger.

The front garden has been designed to be low maintenance, with ornamental shrubs and gravel. It has parking space for three cars. The back garden is surrounded by fencing and hedges, and is a mature private space with shrubs, lawn and paving. There is a handy shed for storage.





North

1 0 1 2 3 4 5
SCALE 1:100 m

Rev	Date	By	Description
Survey			

H DESIGN
ARCHITECTURE AND INTERIORS

Client: Diocese of Derby

Project: 6 Medlock Rd Walton, S40 3NH

Title: Existing Plans

Drawn: 1:100	Drawn: HBC	Date: 11/03/07	Checked: GMB
Drawing no: 023-25		Plan: A100	

© 1988 HANBET
 www.hanbetsurvey.co.uk
 www.hanbetsurvey.com

All drawings prepared by HANBET Survey Ltd. HANBET Survey Ltd. is not responsible for any errors or omissions in these drawings. HANBET Survey Ltd. is not responsible for any errors or omissions in these drawings. HANBET Survey Ltd. is not responsible for any errors or omissions in these drawings.

Schools

There are several schools close by:

Primary

Schools

There are several schools close by:

Primary

Westfield Infant School, Storrs Road, Chesterfield

Walton Peak Flying High Primary School, Whitecotes Lane, Chesterfield

Old Hall Junior School, Old Road, Chesterfield

Walton Holymoorside Primary School, Holymoorside

Secondary

Brookfield Community School, Chatsworth Road, Chesterfield

The parish

The parish of Walton St John is situated on the south-west edge of the market town of Chesterfield, close to the amenities of the Peak District. It has a population of about 7,600.

The village of Holymoorside is semi-rural with a mix of housing types, and some limited and concentrated social housing provision. It is a much sought-after village for its school and is highly desirable for families, retirees and those seeking green space. Holymoorside is a rural village of some 1,500 residents, formerly involved in the cotton-milling industry. It has a primary school, two churches, a village hall and two pubs.

Walton comprises many housing estates of varying ages which were built to accommodate families moving to the area. Over time the demographic of the area closest to St John's has moved from young families to older couples. However, this trend is starting to change with more younger families coming back into the area as older generations move on.

The county town of Matlock is 9 miles away, Sheffield city centre is 15 miles away and Derby city centre, with the Cathedral and Diocese administrative centre, is 27 miles away. There are excellent mainline rail links, and the M1 is easily accessible at J29.

	Parish	Deanery	Diocese	National
Population	7612	189,733	1,063,873	56,506,784
Occupied households	3,468	86,547	463,112	23,444,438
Living in households	7,604	188,226	1,052,261	55,542,946
Average household size	2.19	2.17	2.27	2.37
Living in communal estab'ts	8	1,507	11,612	963,838

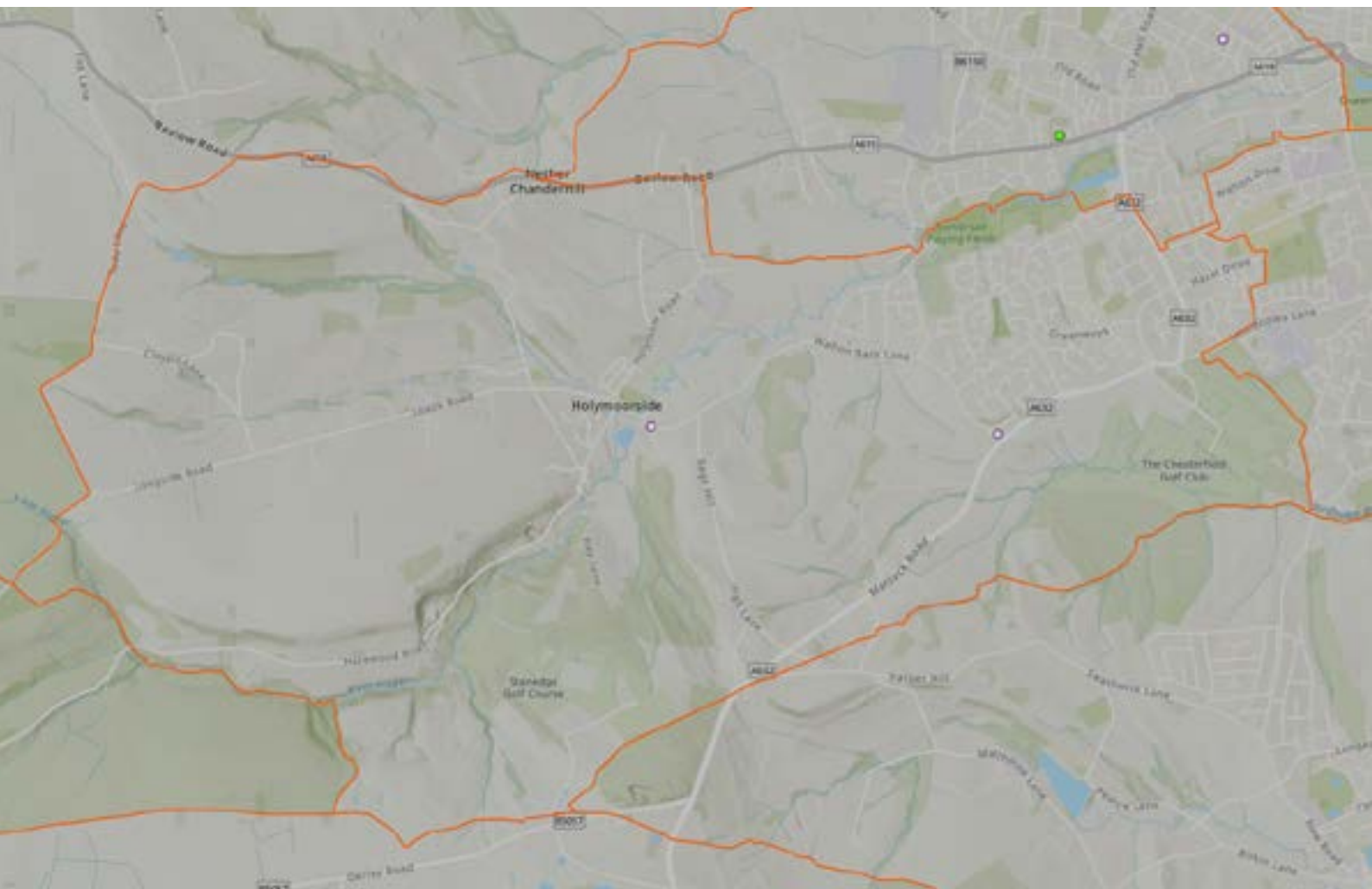
Chesterfield

Chesterfield, the gateway to the Peak District, is in the northeast of Derbyshire and home to approximately 100,000 people. It is famous for its crooked spire (the parish church of St Mary's and All Saints), its 800-year-old market and its proximity to Chatsworth House, the stately home of the Duke and Duchess of Devonshire.

Derbyshire

Derbyshire is often described as England's great outdoors in the heart of the country. The county boasts large areas of outstanding natural beauty made up of moors and dales, rivers, springs and caverns. At its heart lies the Peak District National Park, known and loved by millions for its breathtaking landscapes, relaxation, inspiration and adventure. Nestled between the dales are Derbyshire's charming market towns, pretty villages, historic houses, famous attractions and hundreds of traditional events. It's not all rural idyll; Derbyshire is also a place of thriving commerce and industry, powered by its two largest conurbations of Derby and Chesterfield.

Parish Boundary of St John's Walton with St Peter's Holymoorside-



Our Finances

Following recent turbulent times (COVID etc), our finances recovered well and below are the audited accounts presented at our Annual Parochial Church Meeting in April 2026. We continue to support local and international mission, and work hard to maintain our assets to a high standard and pay our common fund.

Figures based on the Audited Accounts for 2025 (St John's) not including restricted funds

Sources of Income		Expenditure	
All Giving	£106,105	Fundraising expenses	-
Estates Income	£27,357	Building and Estates Facilities	£43,937
Fundraising and Events	£4,090	Church Ministries	£4,223
Operating Activities and Fees	£6,549	Mission (inc. Common Fund)	£73,728
Mission	£7,573	Mission Giving	£13,426
Interest	£483	Administartion	£8,342
Tax Reclaimed	£14,653	Personnal	£33,681
Other Income	£0	Governance	£450
Total Incoming	£166,810	Total Expenditure	£177,787

Figures based on the Accounts for 2025 (St Peter's) not including restricted funds

Sources of Income		Expenditure	
All Giving	£15,032	Fundraising	£62
Building and Estate	£2,640	Buildings	£5,888
Grants and Donations	£1,590	Church Ministries	£493
Fundraising and Events	£241	Mission	£14,602
Interest	£3,992	Mission Giving	£1,780
Tax Recovered	£3,441	Administartion	£116
Other Income	£542	Personnal	
		Other	
Total Income	£27,532	Total Expenditure	£23,166

As seen above, St John's and St Peter's maintain separate accounts. The Parish of St John's is committed to paying its full share of the common fund and has done so in every year until the current year, when the requested amount was increased by over 40%. It has not been possible to budget for this increase (communicated to us in November) and so we have committed to paying the same as last year plus 5% for inflation.

St John's receives over £25,000 per year in letting income.

We tithe 10% of our gifted income each year, which is given to charities on the recommendation of our world mission team. St John's and St Peter's gift to different charities.

The buildings are well maintained. St Peter's is a historic building in need of constant small repairs. St John's is a modern building with few maintenance issues. However, we have had to have major roof repairs, which cost over £20,000. These repairs are now complete, but the interior of the main church is now in need of painting. We do not currently have funding for these but will be working to find the money moving forward.

There are no significant financial reserves.

The giving culture is strong, but there needs to be communication about what is needed. Our income has not kept up with increases in expenses over the past years.



Safeguarding

The Diocese of Derby is committed to safeguarding and promoting the welfare of children, young people and vulnerable adults. All post holders and volunteers are expected to share this commitment. [Click here](#) for further information on our commitment to safeguarding. All appointments are subject to acceptable pre-appointment checks, including a satisfactory Enhanced DBS Check.

Privacy Notice

Your data is processed in line with our [Privacy Notice](#).

How to apply

Thank you for reading this profile. We very much look forward to hearing from you and will be happy to supply any further information you may need.

If you have any specific questions or would value an informal pre-application conversation, then please contact:

The Venerable Matthew Trick
Acting Archdeacon of East Derbyshire
Diocese of Derby
01332 388684
matthew.trick@derby.anglican.org

