



Team Vicar

The East Scarsdale Team Ministry

March 2025

Transformed Lives | Growing Church | Building Community
THE KINGDOM OF GOD - GOOD NEWS FOR ALL

1. Welcome from the Archdeacon of East Derbyshire.
 2. Welcome from the Team Rector, East Scarsdale Team Ministry
 3. Who we are looking for.
 4. Overview of the Team.
 5. Church Life.
 6. Community Engagement.
 7. Our Buildings
 8. Mission Action Plans.
 9. Challenges & Opportunities
 10. What we will do for you.
 11. The Vicarage.
 12. What next?
- Appendix: Finance Reports



The Venerable Karen Hamblin

Archdeacon of East Derbyshire



Welcome to the East Scarsdale Team in Hardwick Deanery in the Diocese of Derby.

Thank you for taking the time to read this profile and consider before God whether this might be where He is calling you at this time.

These four churches and their communities, with some high levels of deprivation, sit on the eastern edge of our Diocese and are finding increasing strength in working together across diverse contexts.

There are real challenges (in common with much of the Church of England), but some amazing opportunities, both new and established, including growing links with children and young people through schools and community projects, as well as through Messy Church and families coming to Baptism, meaningful engagement with Eco-Church and a continuing commitment to the communities each church serves.

There is the 'fresh' challenge of areas of new housing and there is the opportunity to stream-line some aspects of church life through elements of helpful pastoral re-organisation and simplification of governance.

This is a genuinely exciting post that will require hard-work, much prayer and a willingness to 'stick at it', building up and nurturing faithful, committed groups of people to go on being transformed in their own faith and to grow in being a transformative presence for the Kingdom of God in their communities.

Overall, there is a heartfelt desire to share the love of Jesus in a way that really does grow the church and build community.

The current Team Rector is committed to working with a new Team Vicar, to enable East Scarsdale to flourish.

If you sense something of God's call, please get in touch for a conversation.

A handwritten signature in black ink, appearing to read 'K Hamblin'. The signature is written in a cursive, flowing style.

Ven Karen Hamblin

Rev Karen Bradley

Team Rector East Scarsdale Team Ministry

Thank you for taking the time to read this profile and to consider whether this might be somewhere that you are being called to.

The East Scarsdale Team is made up of four parishes with differences and similarities across them. They all have their individual challenges, and they all have lots of opportunity!

The post of Team Vicar here is very much one of coming alongside, seeing where God is at work, and joining in. There is plenty of scope for using your own gifts, abilities, and strengths, and for shaping the ministry here to fit the community and your calling. The church is well received in all four communities and there are plenty of open doors and spaces that would welcome engagement and partnership.

As Team Rector I see the two posts (TR/TV), working together as colleagues to enable ministry here. We have enthusiastic congregation members who are open to change and to trying new things in their parishes. They are also hugely supportive of clergy and do all that they can to support mission here - including ensuring clergy take their time off and have undisturbed rest days.

Any roles in this team comes with hard work but the people in this place (wider community and church members), make it well worthwhile, and opportunities to talk with people about their faith and their lived experience of God and many and varied. Please do be in touch if you'd like to know more - I am always willing to chat through.

Every Blessing

Karen
Rev Karen Bradley
Team Rector East Scarsdale Team Ministry
07823 440513

Welcome from the Team Rector

The following points are based on feedback from some of our congregation members:

- Someone with a missional outlook who has 'real world' experience and is a team player.
- Someone who is approachable and with a good sense of humour.
- Someone who loves Jesus and enjoys sharing that love in our communities.
- Someone who will help us to share God's love in our communities.
- Someone who will work with the Team Rector for the team and the community, who will help to bring us together and be a visible presence in our parishes.
- Someone experienced in working with volunteers.
- Someone to continue the great work that has been done following Covid: someone who will encourage and help us on towards our many aims and plans for the future of our churches and the communities we serve.



Who are we looking for?

The East Scarsdale Team Ministry was established in 1994 and consists of the four parishes of:

**Holy Cross, Upper Langwith
Holy Trinity, Shirebrook
St Luke's, Whaley Thorns
St Michael's, Pleasley.**

Currently each parish has its own governance which elects representatives to a Team Council who have an overview of the Team and share good practice. Looking to the future there will be discussion on joining parishes under one PCC and four DCCs.

The Team is situated in the picturesque rural north-east of Derbyshire and falls under Bolsover District Council on the boundary between Derbyshire and Nottinghamshire. There is quick and easy access to major cities; Derby, Sheffield, Nottingham, and to areas such as Sherwood Forest, Hardwick Hall, Bolsover Castle, and the Peak District.

Country Parks have been established on reclaimed coalmining land at Pleasley and Shirebrook and the area contains many beautiful footpaths on old railway tracks.

The Team serves a population of 17,547 (ONS figures 2018). National deprivation figures from 2010 are ranked out of just over 32,000 parishes with 1 being the most deprived and the East Scarsdale Team ranks from 549 to 1,519 across the parishes on this scale. The Team covers ex mining areas and the closure of the collieries between 1983 and 1993 meant the removal of the main industry in Shirebrook and the surrounding villages. Subsequently Sports Direct located their head office and distribution centre in Shirebrook which brought employment to the area and an influx of mainly eastern European workers.



Currently in the Team we have:

- one full time stipendiary Team Vicar: Rev Karen Bradley
- two licensed Readers: Mrs Kay Savage and Mr James Taylor.

Current structure of regular services

	Week 1	Week 2	Week 3	Week 4	Week 5
Sunday Together (Facebook Live)	8.30am	8.30am	8.30am	8.30am	
St Michael's Pleasley	9.15am HC	9.15am HC	9.15am All Age	9.15am HC	
Holy Cross Upper Langwith	10.30am HC		10.30am HC		
St Luke's Whaley Thorns		10.30am HC		10.30am HC	
Holy Trinity Shirebrook	11.00am Cafe Church	11.00am HC	11.00am HC	11.00am HC	
Baptisms	12.30pm St Michael's	12.30pm Holy Trinity	12.30pm St Luke's or Holycross	12.30pm Holy Trinity	
Team Service					10.00am HC

In addition to regular services, events and services are held at each church for the festivals across the church year. Remembrance Sunday is a particularly important date in the church calendar and in Shirebrook this is marked in partnership with the Town Council, with a parade, church service, and shared refreshments afterwards. These are always well attended and valued by members of our wider community. We also hold an annual Christmas Tree Festival at St Michael's, Pleasley, and in 2022 successfully introduced this initiative into Holy Cross, Langwith.

Holy Trinity, Shirebrook holds an annual 'Light up the Night' service on the weekend closest to All Souls. This is along the lines of the Polish tradition and has engaged with the Polish community that live in the town. Across all four parishes, and in Shirebrook and Pleasley in particular, there is a lot of good will towards the church, and we are seen very much as part of the community. One of our community members has said:

'this is our church, and it holds lots of memories. It has always been here, and it is part of the place. I like to come at certain times of the year and to see our kids coming along too.'

Messy Church

A Messy Church congregation has been meeting monthly as part of St Luke's, Whaley Thorns for the past 5 years (with a break during the pandemic). The group meets at Langwith and Whaley Thorns Village Hall near to St Luke's church building. There is opportunity to grow new leaders from within this group and to develop other services around festivals.

Sunday Brunch

We have a monthly Café Church Service at Holy Trinity in Shirebrook 'Sunday Brunch'. This informal service is well attended and provides a good link for fringe members of the community.

Facebook (see 5 Facebook pages below)

St. Michael's Church, Pleasley
Holy Trinity Church, Shirebrook,
St Luke's Church,
Holy Cross Church Upper Langwith,
Sunday Together



Our Facebook community has grown from its small beginnings in 2008 and now reaches many members of our communities; from those who join our services online, to those who read posts and find out about events via the pages. We made the decision to continue to broadcast following the return after Covid as we discovered people who were not able to access Sunday mornings. For example, those who used to attend but due to health limitations were no longer able to, shift workers, those with children who take part in Sunday morning sports. Not to mention those who find engaging via Facebook a less challenging exploration of faith. Across all five pages we currently have over 1,500 followers and often have conversations with local people about sermons and services they have attended online. During our 2023 Lent online daily reflections, one person in particular continued the conversations via Facebook Messenger and on a one- to-one basis we discussed failure and fear and how God might see that.

Facebook and Facebook Messenger are active points of contact for us and our communities.

During the autumn and winter months, the Team has held Bible study sessions via Zoom. Drawing members from across the Team and from outside it; from Nottingham to Wales. This began during the pandemic and has been a great way of developing discipleship and deepening faith and building unity. The group has a very varied theology which often makes for lively and challenging conversations. It is a group where sharing is very open and in which good disagreement is always found. As we go forward together, we plan to use the Big Church Read resources as a basis for our discussions.

Giving

All four churches are signed up to the Parish Giving Scheme and this has improved regular giving. St Luke's and Holy Cross have only recently enrolled. Holy Trinity, Shirebrook recently installed a contactless giving device as part of the Digital Rollout pilot.

See the Appendix for individual church Finance Reports.





Occasional Offices

Occasional offices are a significant way in which we engage with our communities, and a very positive one. Families continue to look to the church for major life events and very much see the church buildings as their spaces. This is particularly true of Holy Trinity in Shirebrook. Occasional offices are one of the main routes through which clergy and others in the congregation are well known across the four parishes. The existence of close-knit families and strong community links which remain here mean that it is possible to get to know and be known by a large number of people quite quickly and become a recognisable person in the community.

Baptism and Wedding bookings are taken on the first Monday of each month between 7 & 8pm at Holy Trinity, Shirebrook. We are blessed with Baptisms almost every week of the year attracting very large congregations. They are an excellent outreach opportunity and there are plans to build on these links by linking in invitations to our Messy Church, by sending anniversary cards, by invitations to Baptism Renewal Services, and to other events being held by congregations.

As a Team we also conduct a large number of funeral services in church, and relationships with local funeral directors are good. The Team covers more traditional communities who value coming into church to commit their loved ones back to God. There are plans to build a crematorium in Shirebrook over the next five years; this may impact on funeral numbers in church.

Team figures for Occasional Offices pre and post pandemic

	Baptisms	Weddings	Funerals
2019	59	13	78
2022	41	11	61
2023	42	4	82
2024	24	7	45

Schools

Across the parishes there are 6 Primary Schools, a Senior Academy and a Special School.

School	Website	Nos on Roll	PP Pupil Premium
Anthony Bek Primary	https://www.anthonybek.com	210	67
The Park Federation	https://parkfed.co.uk	449	211
Langwith Bassett Academy	http://www.langwithbassettaacademy.org	111	38
Whaley Thorns Primary	https://www.whaleythornsschool.co.uk	151	43
Model Village Primary	https://www.modelvillage.teameducation.org	240	115
Brookfield Primary	https://www.brookfield-pri.com	165	87
Shirebrook Academy	https://www.shirebrookacademy.org	848	347
Stubbin Wood School	https://www.stubbinwood.teameducation.org	205	94

Clergy have links with all of the schools and lead Collective Worship in the Primary Schools on a monthly basis. All the Primary Schools visit church buildings for curriculum style learning and for services at Easter, Christmas and Harvest.

The links with schools in the town are very positive and teachers and staff are keen to involve the church in the work that they do. The Team Rector is a Governor at one of the Primary Schools.

Food is distributed from Lidl in Shirebrook to Brookfield Primary School on a weekly basis by the church which provides an important support to their local families.

Prior to the pandemic, clergy visited the Shirebrook Academy weekly to share lunch with pupils and to act as Chaplains to staff and students. This school now has a new Principal and we have just begun going in again to lead Collective Worship. It would be good to see the chaplaincy initiative restart. Clergy have also taught curriculum items at the Senior School and have set up prayer stations in the communal areas there which were well received.





New Houghton Community Hub

Clergy and congregation members are part of a community enterprise in New Houghton, which comes within the parish of St Michael's, Pleasley. The church building in New Houghton village was closed in 2010 and it was felt important to establish a church presence in that locality in a different way. The Hub is a building rented on a peppercorn rent from Bolsover District Council and is a partnership with the community. Church input is valued and welcomed by those who attend the Hub, and the opportunities offered there include: benefits advice from Derbyshire Unemployed Workers Centre, Toddlers Group, Adult Craft sessions, a Café, and Youth Groups. The local St John Ambulance group, who have had links with St Michael's for many years, also meets in the Hub weekly.

Volunteers arrange parties at different seasons of the year and also day trips for the community at subsidised costs. The Hub is a relatively new venture as it only really got going post pandemic, but it is growing well and becoming truly a 'Hub' for the local people of New Houghton. There is opportunity to begin a Board Game/ Bingo Church community in the Hub and this concept is being welcomed by the volunteers who are already part of the Hub community.

Through church/school links, staff and pupils from Shirebrook Academy Art department have designed and are currently painting a mural on the outside wall of New Houghton Community Hub. There is a great openness to the church across the community and an open door to our involvement in projects and in our initiating them. Through our links with The Hub, we have started a community football project with the support and guidance of Ambassadors Football. This launched on 21st June 2023 in New Houghton on the Parish Council maintained park and is open for children in school years 5 to 7 to drop in and have football coaching and game experience. Members of St Michael's congregation and some volunteers from New Houghton are supporting this and are excited to be engaging with our community in this way.

Who knows what could come from this?

Nursing and Supported Living Accommodations

There are several nursing and residential homes across the parishes. The Team currently goes into Richmond Care Home and The Grange Nursing Home in Shirebrook to lead residents in times of singing and prayer. In Whaley Thorns, there is a Supported Living Unit for men, The Limes. A new link with Oaklands Care Home in Whaley Thorns has been made by members of the congregation, who visited to sing carols at Christmas.

Friends of Shirebrook Cemetery

As a team we were founding members of the Friends of Shirebrook Cemetery, a group which has worked in partnership with the Town Council in Shirebrook, and members of the community, to restore and return to use the chapel in the grounds of Shirebrook Cemetery. There is opportunity to develop this space further and potential for chaplaincy and support to those who visit the cemetery.





Holy Cross, Upper Langwith

Holy Cross has one Churchwarden in Post; Ms Christine Dale.
The Electoral Roll stands at 20

The building has heated pews in line with our Eco Church ethos. Holy Cross has use of a refurbished Community Hall. The church has a number of rent-free hours in the hall per year and there is an opportunity to use these to engage with people in the village, or to use the space for Team reflection or retreat days.

Holy Cross has an open churchyard which is currently being shaped into a space where wildlife can be encouraged and thrive as part of our Eco Church initiative. Paths have been mown and areas allowed to grow more freely. Bird boxes, bug boxes and beehives are installed, along with a small wildlife pond. Plans are in hand for a prayer walk through the Churchyard. Congregation members, led by the Church Warden and PCC secretary, are keen to develop this project and to engage the local school and community in a more sustainable way of life Caring for God's Creation. We are thrilled to be the first Eco church in the Hardwick Deanery to receive a bronze award in the A Rocha UK Eco church award scheme.



Holy Trinity, Shirebrook

Holy Trinity has one Churchwarden in post; Mrs Kay Savage.
The Electoral Roll stands at 22

Holy Trinity is well used for occasional offices and school services where numbers fill the building.

There is also a church hall which is well used on a weekly basis by several groups:

- Scouts
- Guides
- Slimming World
- Café 101 (mental health support group),
- Viking re-enactment Group
- Zumba classes

The hall is also used for church events, meetings and for parties. The churchyard is closed and is well maintained by Bolsover District Council.





St Luke's, Whaley Thorns

St Luke's does not currently have a church warden.
The Electoral Roll stands at 12.

The last quinquennial was in May 2021 with nothing significant needing repair. The flooring in the toilet needs replacing and a sill in the bell tower needs some work. This is now work in progress.

St Luke's is regularly used by the local school at the main Christian festivals and for occasional offices. The congregation is steadily growing in number and their Christian faith and some further development in this area could see this church become the beacon of the community that it once was. St Luke's has an open churchyard.



St Michael's, Pleasley

St Michael's has one churchwarden; Mr Phillip Briggs.
The Electoral Roll stands at 33.

The churchyard is closed and is well maintained by Bolsover District Council. The Parish Council Cemetery is located next to the church.

When the church in New Houghton was sold, the church hall was retained and is leased to the Parish Council. The hall is used for meetings including a weekly computer class which is free to local parishioners. St Michael's has an annual allowance of several hours' free usage of the hall which it currently does not use as The Hub in New Houghton is more central to the village.



Our Mission Action Planning is realistic and achievable within the resources we have, but still visionary.

Returning to worship after the pandemic has been harder than anticipated and congregations are keen not to be overwhelmed by the challenge of taking on too much at once, especially with all that is already happening. The mission objectives laid out below were set at the beginning of November 2022 and were reviewed formally at the end April 2023 where updates and changes were made to accommodate parish changes.

Alongside current service provision and the many other events and opportunities we have to share the good news of God's love, we have set the following missional aims for the coming two years in each congregation:

Holy Cross, Upper Langwith

Aim: Becoming an Eco Church - Holy Cross Aiming for Gold.... We are well on the way to silver as we achieved the Bronze Eco Church Award within months of participating in the scheme. We have changed the supplier of all products that are available as Fairtrade. We have undertaken a wildflower survey and will be introducing a wildlife pond and herb garden. Once the churchyard is developed the aim would be to invite the local school for churchyard discovery learning.

Aim: Explore setting up a Messy Church style after school club at Langwith Bassett School. Alternatively, one could be run in the Community Hall.

Holy Trinity, Shirebrook

Aim: Monthly Messy Church sessions. The church held a regular Messy Church before COVID-19. The PCC have begun to plan when this will be resumed and are working towards monthly sessions in the church hall. School links and baptism links will be used to share invitations to families.

St Luke's, Whaley Thorns

Aim: Introduce a Friendship Group. St Luke's congregation is planning to introduce a warm space initiative weekly on Mondays from 1-3pm in the village hall near the church - offering board games and refreshments.

St Michael's, Pleasley

Aim: Establish a community football group in New Houghton. Some form of youth engagement is currently needed within the New Houghton community. Members of St Michael's have launched community football sessions in partnership with Ambassadors Football, and these are going really well. A great start to this programme, with roughly 20 children taking part. There is also a good team of volunteers and engagement with parents on the touch line.

Challenges

Church congregations are generally small in numbers and largely elderly. Those young families we do have are very time poor as they have young children and full-time jobs in the main.

The cost of utilities and insurances are high and if funerals decrease in number this will become more of an issue.

Three of the churches have only one Churchwarden currently in post. This puts additional pressure on the single Churchwardens.

It is worth noting that the planned pastoral reorganisation will address many of these challenges and enable more of a focus on mission and outreach across the Team

What we would do for you

Comments from some of our congregation members:

‘Volunteer, help and support in any way we can.’

‘Offer diverse worship opportunities in a challenging post-industrial environment.’

‘Be a critical friend.’

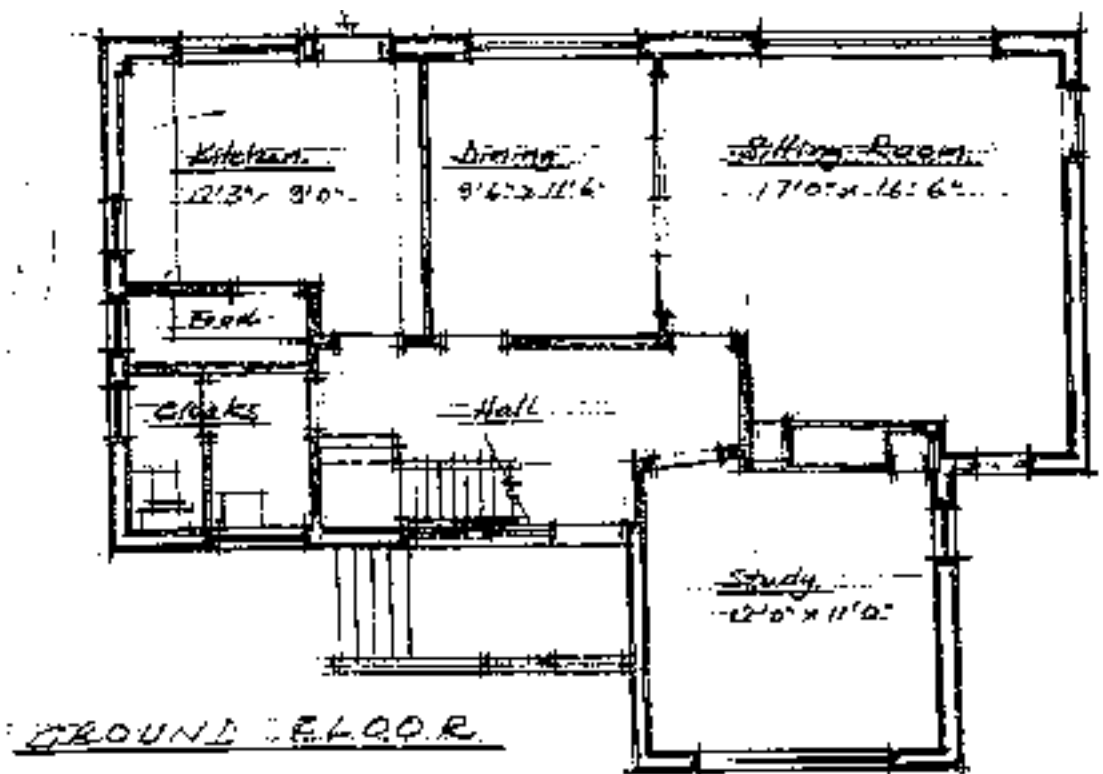
‘Be welcoming, and support and embrace change.’

‘Pray for you, respect your day off and encourage you to take it. Understand your need to take a 48 hour break once a month and encourage you to do that. Support your taking time for a retreat and Clergy Conference ... and all your annual leave.’

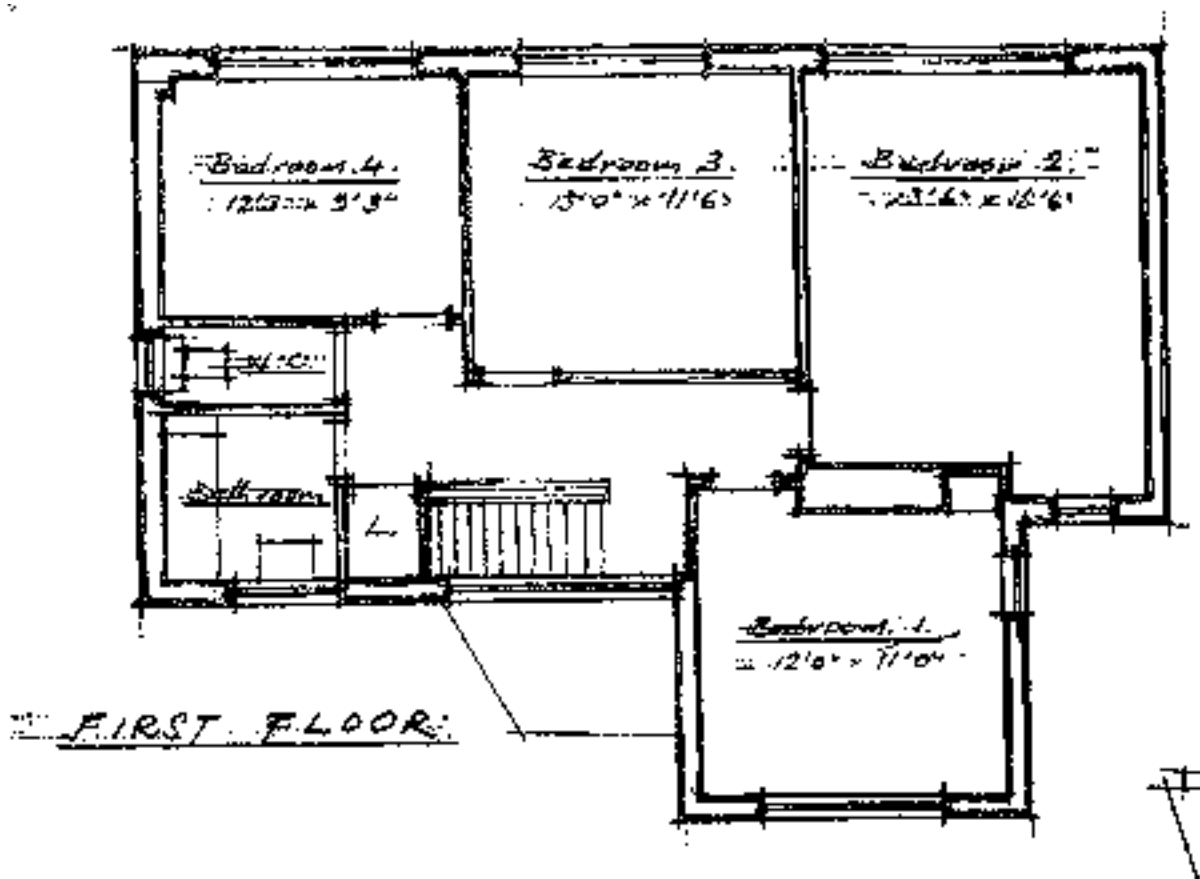


The Vicarage, Main Street, Shirebrook, NG20 8DN

The Vicarage is a four bedroomed detached house with garage. Downstairs it has a main living room, dining room, office/study, kitchen, and downstairs cloakroom. It has gas central heating and double glazing throughout. The property has a well-established garden which is hedged to the front and side. There is a door from the living room into the garden. It is located within walking distance of Holy Trinity Shirebrook. There is parking for several cars.



The Vicarage



Please be in touch for a conversation, we would love to hear from you.

Archdeacon of East Derbyshire (main contact)
Venerable Karen Hamblin
Tel: 07496 823404
Email: karen.hamblin@derby.anglican.org

Rev Karen Bradley (Team Vicar)
Tel: 07823 440513
Email: rev.karen@yahoo.co.uk

Safeguarding

The Diocese of Derby is committed to safeguarding and promoting the welfare of children, young people and vulnerable adults. All post holders and volunteers are expected to share this commitment. Click here for further information on [our commitment to safeguarding](#). All appointments are subject to acceptable pre-appointment checks, including a satisfactory Enhanced DBS Check.

Privacy Notice

Your data is processed in line with our [Privacy Notice](#).

1 of 4 St Michaels Pleasley P.C.C. Accounts 2023

B/B/F - Current Account £10,498
Petty Cash £100
Total Current Balance £10,598

Deposit Account **£17,464**
National savings **£10,208**
Old Well Dressing **£5,939**

Income		Expenditure	
Covenants	3204	Insurance	1631
Donations	514	Service expenses	340
Plate	2723	Children's Society	750
Fees	2645	Treasurer	2087
Energy Rebate	356	Sundries	113
Children's Society	750	Electricity	1756
Events	1965	Water	181
		CCLI	183
		DDBF Fees	862
		Church Maintenance	1148
		Event expenses	286
		Charity	291
		Common Fund	3000
		Football New Houghton	193
Total Income	£12,157	Total Expenditure	£12,821

Total loss -£664

B/C/F - C/A £9,527
Petty Cash £100
To be banked £307
Total - Current Account **£9,934**

Deposit Account **£17,464**
National Savings **£10,208**
Old Well Dressing **£5,939**
Total **£43,545**

Sunday Club **£203**

Total **£44,579**

2 of 4 Holy Cross P.C.C. Accounts 2023

B/B/F - Current Account	£3672
Savings	£6250
Petty Cash	£250
To be banked	£420

Totals **£10,592**

CCLA **£4141**

Income

Covenants	217
Donations	2300
Plate	916
Fees	1204
Energy Rebate	993
Bridging Loan	1000
Treasurer rebate	500

Expenditure

Insurance	1321
Service Fees	185
Heated Pews	8251
DDBF Fees	735
Church Maintenance	461
Treasurer	2087
Sundries	44
Electricity	691
Gas standing fees	858
Gardener	126

Total Income £7,130 **£7,130**

Total Expenditure £14,759 **£14,759**

Total Profit -£7629

B/C/F - C/A	£1,937
Savings	£250
To be banked	£526
Petty Cash	£250
Total - Current Account	£2,963

CCLA **£4326**

3 of 4 St Luke's P.C.C. Accounts 2021

Balance C/A £31,195

Income		Expenditure	
Donations	186	Messy Church	250
Plate	1078	Common Fund	4733
Fees from services	8060	Treasurer	2087
Messy Church Donations	300	Insurance	1271
Council Refund	300	Sundries	92
Energy Refund DDBF	1505	Service Fees	675
Treasurer refund	500	Electricity	1676
		Gardener	1500
		Church Maintenance	50
		Charity	80
		DDBF Fees	2024
Total Income	£11,929	Total Expenditure	14,438

Total Profit £-2509

EOY Balance £28,686

B/C/F - C/A	£27611
Petty Cash	£75
To be banked	£0
Bridging Loan HC	£1000
Total - Current Account	£28,686

4 of 4 Holy Trinity Church P.C.C. Accounts ending 31.12.2023

Income		Expenditure	
Covenants	3617	Insurance	5944
Donations	981	Service Expenses	3592
Plate collection	2458	Gas	2636
Fees	18711	Electricity	4098
Hall Hire	3845	Water	755
Fundraising	162	Treasurer	1581
Gen. Energy Fund	100	DDBF	7966
CBF Investment	141	Team Expenses	975
Toilet Fund	2397	Church Maintenance	2216
Bell Fund	90	Hall Cleaning	2089
Votive Candles	108	Licences	252
Deficit	81	P & S	29
		Charities	277
		Sundries	281
Total Income	£32691	Total Expenditure	32691

CCLA Deposit Fund		Balance C/d Current Account	£16245.49
Bal. B/Fwd.	£419.55	Less unrepresented Cheque	£60.00
Toilet Fund	£6002.63	Cash Book Balance	£16185.49
Retained Interest	£108.96	Cash Balance C/d	£34.16
Total	£6531.14		

M Harrison Bequest	£4650.59	Total Value
Harrison Trust	£519.92	Total Value