

# The Parishes of St Mark's Church, Winshill and St Wystan's Church, Bretby, with Immanuel Church, Stapenhill.



Transformed Lives | Growing Church | Building Community  
**THE KINGDOM OF GOD - GOOD NEWS FOR ALL**

# Welcome from the Archdeacon

I am delighted you are considering whether God is calling you to serve these communities as their next Vicar and Priest in Charge. This profile reflects the parishes' desire for an Incumbent who will bring energy, vision, and collaborative leadership.



The Benefice of Winhill and Bretby takes in the parishes of St Mark's, Winhill, and St Wystan's, Bretby. Winhill is a village east of Burton-on-Trent in the West Midlands borough of East Staffordshire. Winhill is the larger, primarily urban of the two villages, with a resident population of approximately 8,000. Bretby, in contrast, is a close-knit rural community of circa 230 with a small but active congregation. Again, in comparison, Immanuel Stapenhill is located on the East side of the River Trent, serving a residential estate of 4,500 residents. The breadth of contexts and opportunities for mission is part of the exciting possibilities of this role.

The next Incumbent will arrive to find able and committed lay teams already in place, ready to collaborate in mission and ministry. There are already ambitions for new expressions of worship, a genuine desire for deeper discipleship across all age groups and an aspiration for the spiritual and numerical growth of the church communities. Beyond this, there are a range of connections to the three distinct local communities, which have further missional potential. In particular, there are opportunities to deepen connections with the three local primary schools and the Abbot Beyne Secondary School.

Perhaps most importantly, if you come and join us in the Diocese of Derby, you will be well cared for and supported to grow and flourish in your ministry. Mercia Deanery has a deeply supportive clergy Chapter, a strong and caring Deanery Leadership Team, and an engaged Synod. Grants for personal development and retreat are made available each year. Ministerial Development Review and Clergy Ministerial Development are also in place.

As you read on through this profile, please be assured of my prayers as you reflect on an application. If an informal conversation with me would help your reflections please contact my PA Sue Hilderley-Burton ([sue.hilderley-burton@derby.anglican.org](mailto:sue.hilderley-burton@derby.anglican.org)) to arrange a convenient time.

In Christ

A handwritten signature in black ink, reading 'Matthew Trick'. The signature is stylized with a large, sweeping 'M' and a cursive 'Trick'.

**The Venerable Matthew Trick**  
Archdeacon of Derby City and South Derbyshire

# WHO WE ARE LOOKING FOR

## We pray for our new leader to be:

- Spirit-led in their ministry to the three distinct parishes and communities, sympathetic to the varied traditions, worship styles and demographics; encouraging close church relationships whilst maintaining and respecting individuality.
- A visible presence across the Benefice, responsive to the needs and values of each parish and dividing time fairly between them.
- Able to manage change in an open, collaborative and sensitive manner, and eager to work in partnership with existing lay members to further the work of God and encourage growth for the future.
- An engaging preacher and worship leader, keen to minister to ALL ages, with an open heart and a careful listening ear.
- Experienced and interested in ministry to young people, children and families; supporting and building on the work already in place.
- Enthusiastic about the opportunity to build and strengthen links with local schools, charities, organisations and other denominations.
- Friendly and compassionate, able to engage socially and pastorally, supporting parishioners within church and in our wider communities.
- Supportive of all who seek a deeper relationship with God, being perceptive to the spiritual needs of all ages, especially those for whom church may feel daunting, exclusive or irrelevant.
- Encouraging of the disciples within our churches, having the energy and enthusiasm to build on our strengths, challenge our weaknesses and further our mission to share and spread the Gospel of Christ.

# LOCATION AND DEMOGRAPHIC INFORMATION

Please see appendix 1 for demographic data from ArcGIS

Located between Derby and Lichfield in the West Midlands, Winshill and Stapenhill are suburbs of Burton upon Trent, a once-renowned brewing town, Bretby is a neighbouring rural village.

The River Trent skirts one side of the parishes of Winshill and Stapenhill, providing close access to the washlands and areas of natural interest, and dividing them from the town.

Within Winshill there are several schools, care homes and sheltered housing; a few small shops, fish and chip takeaways and a community café; pubs, doctor's surgery, Winshill Neighbourhood Resource Centre; parks, green spaces and cricket club; other worship centres include St Joseph's Catholic Church, the Gospel Hall, Family Church (meeting in a school building) and an Ahmadiyya mosque (in the former Methodist Church).

With a population of over 9000 and a relatively high deprivation score, the local resources do not always meet the need, which is where the church can do so much more.

Bretby is a rural community of fewer than 1000 inhabitants with a strong farming tradition. It is sited midway between Burton upon Trent and Swadlincote. There is no longer a school, nor parish hall but there is a nursing home in the grounds of nearby Bretby Hall. The Hall itself has been converted to apartments with additional housing built in the grounds. Bretby Business Park, comprising of firms that employ around 2,500 people, the Stanhope Premier Inn and Burton Golf Club are on nearby Ashby Road, and the Garden Centre and Crematorium are very close to the church.

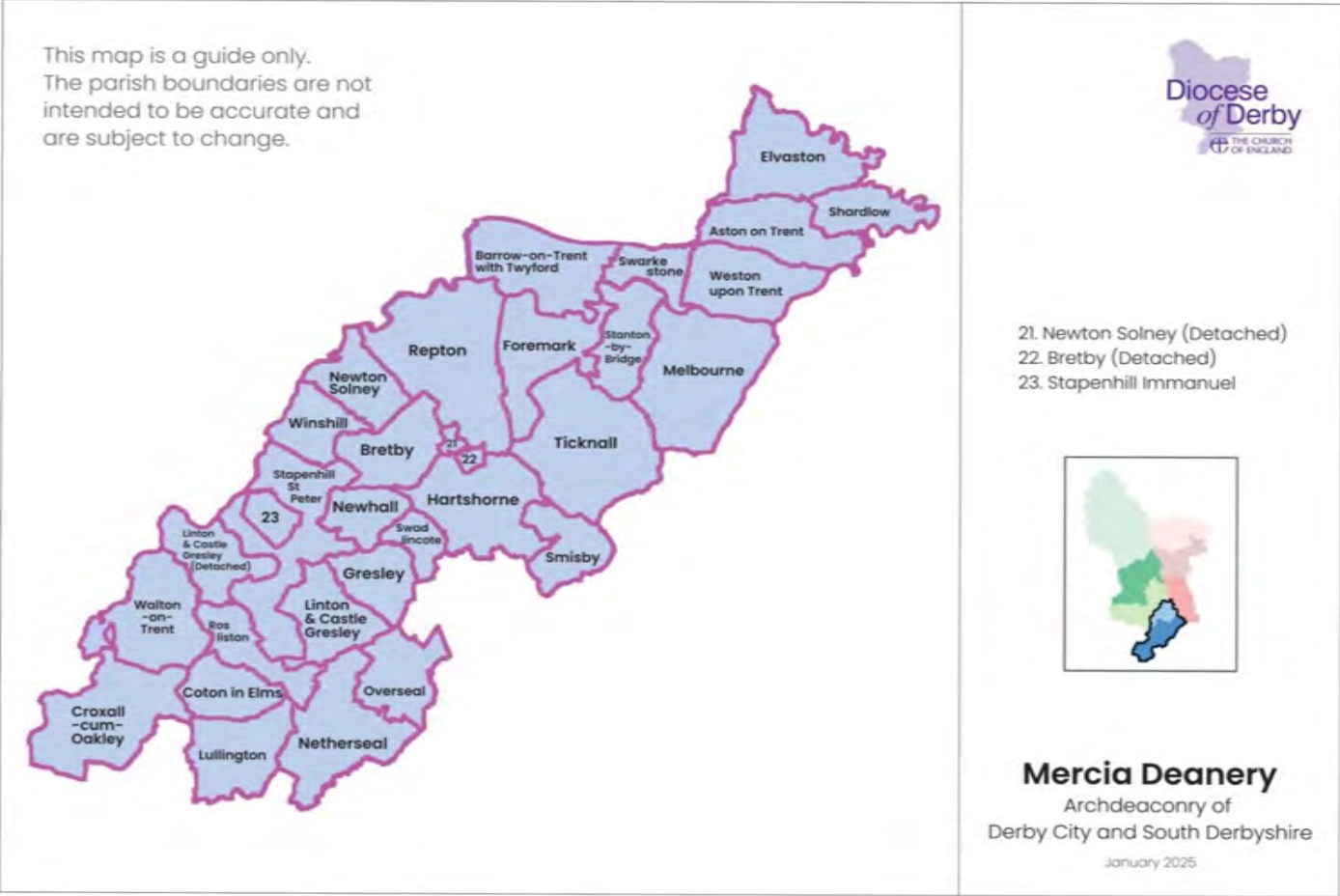
Along with St Mark's, Immanuel is one of a small number of churches that sit in the County Council boundary of Staffordshire but are within the Diocese of Derby.

A recent census shows that our local community, living in a privately owned and social housing, is mixed; consisting mostly of families with dependent children, but also many over the age of 65 who live alone. Around 60% of our community face at least one measure of social deprivation and so the need for community support is high. The wider Stapenhill area has both Primary and Secondary Schools, and there are three new housing developments nearby.

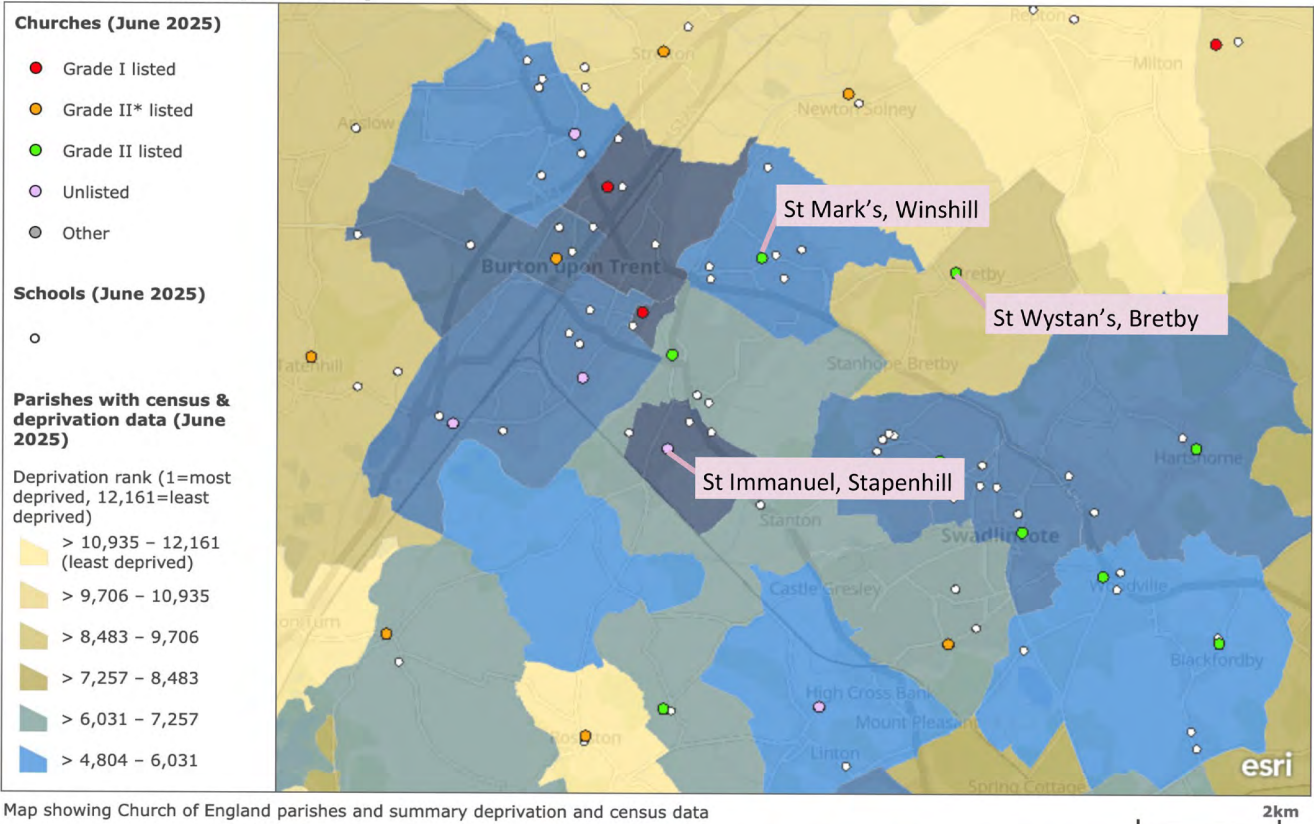
We are in walking distance of the town of Burton upon Trent and are in easy access of the National Forest, offering outdoor activities for all. The riverside area between Stapenhill and Burton is a beautiful and well-maintained area with gardens, woodland walks and floodplains.



# MAPS



## Church of England parish map



# SCHOOLS AND COMMUNITY SERVICES

There are three primary schools in the parish of Winshill: Winshill Village Primary School, Tower View Primary School, of which our Treasurer is a new Governor, and Holy Rosary RC Primary School. The Abbot Beyne School is the local secondary school. There is also Bladon House, a residential special school for children with communication and learning disabilities on the boundary of the parish, and Burton PRU, a short-stay school for children not currently accessing mainstream education nearby the church.

Fee paying schools within daily travelling distance include Repton School, Derby Grammar School, Derby High School and Trent College in Long Eaton.

There are two nursing homes in the area, Coldbrock House (formally Bearwood Hill House) and Mount Pleasant, plus a block of individual living accommodation at Elizabeth Court.

While local schools in Winshill and Stapenhill are not faith led, St Mark's have strong links with the closest two primary schools, regularly hosting Harvest Festivals and Carol Services, and for many years welcoming year groups into church twice a year for our 'Experience Christmas/Easter' (on occasion Experience Passover and Harvest). These see teams of church members engaging with small groups through interactive teaching, building their knowledge of God's word and showing His love for them.

<https://www.towerview.staffs.sch.uk/>

<https://www.winshillvillage.org.uk/>

We also neighbour the local Winshill Secondary School, Abbot Beyne, where as yet links have not been successful, but we haven't given up hope and have a vision to offer support for the local secondary children in the future.

<https://www.abbotbeyneschool.co.uk/>

There is a junior school close to the Immanuel church, although regular links are yet to be established. There are also opportunities waiting to be embraced with links to the local organisations that offer both day and residential support for adults with learning difficulties.

There are no schools in Bretby.



# ST MARK'S

## Church Building

St Mark's sits in a prominent position at the top of a hill. The building has gone through considerable changes in recent years thanks to our exciting reordering. Notably this included the removal of some of the pews at the back of church and repositioning of the font to make space for a kitchenette, family room (the Lion's Den) and new toilets. We also had a new meeting room (the Upper room) added above the church vestry. These changes have opened up the church to create valuable spaces regularly used by church and visiting groups. We now host a popular weekly toddler group 'Bumps, Babies and Beyond' every Tuesday, and a monthly Saturday Afternoon Tea attended by worshippers and non-church members.

For details on our church history and notable features, please see our website.

<https://www.stmarkswinshill.co.uk/history>

You can also see a 360 photograph of inside St Mark's here

<https://www.stmarkswinshill.co.uk/welcome/gallery2>

## Church Grounds

The extensive grounds are managed by a groundsman who cuts the grass and our committed team of volunteers who have been instrumental in making many positive changes outside. A large proportion of the churchyard is only used for re-open graves, with the ground at the front of the church now being closed. The Meadow, once a waste land and overspill carpark has been transformed into a grassed area and gardens, used by Scouting groups, our children's activity day and occasionally for outdoor worship and social events.

The church has been awarded the Silver Eco Award and are working towards the Gold. See here for a video about our efforts as an Eco church.

<https://www.youtube.com/watch?v=EojUteLNVWg>





## Church Officers and congregation

We have two dedicated church wardens and a PCC consisting of a devoted group of worshippers who strive to keep our church people and building safe and keep the church moving forward. Our PCC Secretary keeps all well informed, as well as managing many of the enquiries that come in during the vacancy.

A newly appointed Treasurer is in the process of bringing the complex accounts back into order using "Myfundaccounting", a system specifically designed for churches to record accounting transactions and funds clearly and effectively.

Our PSO and DBS Administrators are regular church attendees who are visible and approachable. They are continuing to keep relevant persons suitably trained, and are using the Parish Safeguarding Dashboard (Level 3) to keep the church up to date in necessary matters. There are many others who are vital to the work and worship of St Mark's, including our Children in Church team, choir and organist, church yard gardening team, vergers, cake bakers and refreshment servers, social committee, pastoral care team, baptism team, magazine editor and distributors, web and digital team, fabric committee, liturgy committee, flower arrangers, safeguarding team, synod representatives, cleaner, and those who step forward to read, pray, welcome and administer communion during services. During the vacancy a number of volunteers take communion to those who are house bound. Where possible volunteers also visit those who cannot get to church. We continue to visit to sing carols near Christmas too.

At the close of the Winshill Methodist Church, many from their congregation joined our family at St Mark's and the cross from behind their altar was erected in church as a present reminder of their past worship and our joint fellowship.

There are 79 on our Electoral Roll, with an average Sunday attendance of 60.





## Reaching out to the wider community

St Mark's aims to be at the centre of the Winshill Community. There are groups that use the church on a weekly basis, such as Al Anon support groups. The Thursday Club, 22nd Burton-on-Trent (St Mark's) Scout Group use the church for events such as AGM and shows, and have use of the Meadow for games, fire lighting, camping and other activities. The church is the venue for the Rolls Royce Band, Friday Voices and the Burton Band for regular concerts. The WI hold their meetings here as do the Flood Risk planning group.

The congregation give regularly to weekly collections of food for the YMCA. Money donated at the Sunday and Wednesday services for tea and coffee are donated to local and international charities.

Afternoon Tea, served once a month is an outreach programme to bring the community into the church. The welcome is always warm and the cake is exceptional. It has been a resounding success. The social committee organise events open to all in the community of Winshill throughout the year, for example, pancake day, lent lunches, midsummer cream tea, coffee morning with quiz and plant sale, bring and share lunches and a Christmas event.

We are keen that St Mark's should be a place where anyone can come and feel they are in the company of friends.

The Children in Church committee host a free annual summer activity day for primary aged children, with crafts, activities, games, songs and lunch. We have family activities on Good Friday and Advent Sunday, incorporating crafts and worship for all ages, followed by fellowship over hot cross buns or mince pies. As with so many activities at St Mark's, we aim to fill tummies and hearts.

Our Parish magazine is distributed to approximately 300 households each month, continuing to communicate with those who attend services and functions, and those who can no longer- or are yet to come. Each year, church representatives attend the Winshill Community Fayre during the summer, greeting the community with a smile and spreading news of activities and services, as well as God's love for each individual.





# ST WYSTAN'S

## Church Building

There has been a chapel at Bretby since the 11th/early 12th century. The present building was erected on the site of the original, and part of the west wall with the two buttresses is all that remains of the earlier building. The present church was dedicated on 4th July 1878. The pews comfortably seat 70 and additional chairs placed in the Wragg Room can enable us to accommodate 100. The Wragg room is an area at the rear of the church with a toilet and small kitchenette, where refreshments are served.

## Church Officers and congregation

The 2025 Electoral Roll is 31 with a significant proportion of older members. The average attendance at morning services for 2024 was 23.

Bretby is an enthusiastic and dedicated parish, which, although small in congregational numbers, has actively sought ways to provide spiritual, financial and practical solutions to the challenges of modern circumstances. We are now looking for a leader who will help us as we continue to grow together. There are willing volunteers who serve as church wardens, readers, intercessors, idespersons, refreshment providers, cleaners, and who provide flowers to enhance our worship, and decorate the church for special occasions.

As well as the regular congregation, there are a number of strong supporters in the parish, who readily respond to fundraising challenges, and participate in, and enjoy, the "special" services in the year at Christingle, Mothering Sunday, the carol service, the Armistice Day commemoration and, of course, the Harvest festival.





## Reaching out to the wider community

There is a significant level of community involvement for the village focused on and around the church, although some activities did not survive Covid. The numbers for Spring and Harvest Parish lunches are more limited than they were. The Macmillan and Christian Aid coffee mornings are popular and well attended. These events are as much an opportunity for fellowship, and wider social interaction, as fund raisers. At our annual service on Remembrance Sunday, we gather around the memorial pump, the community lay their wreaths, we read the names of the fallen, play the Last Post and observe the silence before the service in church, which is much appreciated by all who attend. Bretby WI hold their monthly committee meetings and craft group sessions in church and we host the Mercia Group Carol Service when it is Bretby WI's turn. We also held a Coronation bring and share picnic, which was greatly enjoyed. The church is used as a polling centre in local and national elections.

We produce a free newsletter every quarter, which is delivered to most houses in the parish. It gives contact numbers for clergy and churchwardens, details of the services and activities for the quarter and other items of interest. It invites anyone who needs a lift to church to contact the wardens, so that worshippers can still attend. A copy of the magazine is displayed on the notice board, which contains more detailed information about contact numbers, rotas and other church business.

We try to be a caring church, and a nucleus of the congregation undertake visits to those known to us whose age or infirmity makes attendance impossible, or who need support during illness or bereavement, or just a helping hand. A high priority going forward will be for clergy to again visit the local care home regularly, taking communion there and to individual church members who could no longer get to services, undertaking pastoral work, visiting members of the congregation, past and present, and engaging with the wider community.





We are seeking to reinstate a monthly “house group”, to be hosted in church, sharing topics for discussion, bible study and prayer.

Every year a group of us go around the village carol singing and the money raised is shared between three local charities. Donations from the Christingle and Carol Services go to the Children’s Society and a large donation goes to the British Legion after the Remembrance Day service, as well as the support for Christian Aid and Macmillan cancer. We collect items for the local foodbank, and respond to individual local and national appeals. Christian Aid is supported by the availability of envelopes, a raffle and coffee morning, which ensures a sizeable annual donation. Harvest is a very special service for our local community, and the church is beautifully decorated and resounds with the celebration of “harvest home”. The harvest produce goes to a local home.





# IMMANUEL

## Church Building

Immanuel is a modern building; the foundation stone for which was laid in December 1963 and was built on land generously gifted to accommodate the spiritual needs of the residents of the brand-new housing estate. Built in the '60s, Immanuel was originally a church plant by the neighbouring St Peter's Church but became a parish in its own right in 1996. The vicarage was added later but is now rented out by the Diocese.

The church section of the building seats around 40 people and has a raised area for the altar. This section is divided from the main part of the building by full height screens which can be opened up for larger worship needs giving rise to potentially accommodating 200 people. The church section also holds a vestry and small meeting room.

The community section has a kitchen, a small side room and a larger meeting room. There is also a small space for outdoor activities and a large storage area. Hirers have use of all of the community side of the building.

The Quinquennial was in 2022 with few actions to implement. The PCC have our own plans for improvement of the space which we would hope would make the space attractive to more community hirers. The building is comfortable and functions well, but is in need of some redecoration.





## Church Officers and congregation

We enjoy sharing fellowship, discussing ideas and helping each other. We are encouraging and enjoy developing and nurturing each other's talents. We enjoy singing and see the value in different types of worship, from the traditional to the informal, from joy filled to prayerful. We are Spirit filled and keen to support each other with the development of a life-long faith.

There are currently 16 people on the Electoral Roll. We have a small but dedicated team who visit members of our congregation who are sadly unable to attend church any longer due to health or age-related challenges. Our generous church members shop for others, take food, do welfare checks and visit care homes and hospitals alongside keeping them in our prayers.

## Reaching out to the wider community

A number of groups use the community hall section of the church to meet. These groups include Guiding units, Slimming World, the WI and a U3A tea and talk group. We endeavour to forge links with these groups and work collaboratively to arrange community fairs and celebrations. All our community groups contribute to our successful annual Autumn Fair and Christmas Tree Festival.

Our fairs and coffee morning events are popular with the local community and we have explored ideas to link with the WI for events such as the Vintage Holiday Club. We support the Girl Guiding units by hosting a 'Pot-Luck Nativity' each Christmas which is gloriously chaotic.





# WORSHIP PATTERNS

See appendix 2 for our regular service pattern

There is a broad mix of Anglican service styles within our three churches, ranging from the very traditional (Evensong and Parish Eucharist) to the more informal All age/family services. We hope this offers something for everyone.

## St Mark's

Please see here for a breakdown of St Mark's services

<https://www.stmarkswinshill.co.uk/regular-services>

The majority of our services at St Mark's are supported by our enthusiastic robed choir and our organist, with the ministry team wearing vestments. Despite the traditional feel of many of our services, we are keen to make everyone feel welcome and comfortable. New worshippers are welcomed, supported and put at ease. We aim to be fully inclusive and accessible, with a loop system and large print hymn books. Families are informed that we would always rather have noisy children in church than no children in church.

On Sundays, children are provided with weekly colouring and activities, as well as having access to Bible Bags with toys, stories and games to be used by families in the pews, there is also a children's bookshelf and table at the back of church and break out space within the Lion's Den. On the fourth Sunday of every month we have our Bible Box (Sunday school) sessions which take place during the service, led by members of our Children in Church Team. For Communion services there are children focused booklets. We are keen to involve children further in our ministry and hope some of the many local families we engage elsewhere will begin to feel more at home coming to services. Our Family service contains a mix of hymns and worship songs suitable for all ages and engages and includes children well. We have hopes of offering an intergenerational service 'Rejoice', which will be a mix of simple worship, café church style discussion/bible study, activities and crafts followed by a shared meal. This proposal was supported by the Area Dean and, although currently put on hold, offers a way forward to meet the Diocesan objective to Grow a Younger Church.







The aspect of coming together both for worship and socialising is important at St Mark's. Many remain behind after services to chat, relax and enjoy fresh coffee, biscuits and sometimes cake together. This friendly welcome is one of the ways we seek to combat the epidemic of loneliness.

## St Wystan's

St Wystan's offers worship and prayer of a broad nature within the Anglican Communion using Common Worship Holy Communion Order Two, and have recently been gifted new hymn books incorporating Hymns Ancient and Modern New Standard, Mission Praise and additional hymns.

We are a welcoming and sociable church. Coffee or tea and biscuits are always served after the service. We do not have a choir, but we are well served by two regular organists, and we are joyous and enthusiastic hymn singers.

We hope and believe that those who visit us feel the physical, social and spiritual environment is one of warmth and welcome.

In previous interregnums, lay members have embraced taking more responsibility for service delivery in the absence of clergy, taking the initiative in preparing specialist services and maintaining a keen interest in the form of our worship. On necessary occasions our "do it yourself" Songs of Praise services were very popular.

## Immanuel

Immanuel church has one service at 11am each Sunday and over the month we celebrate a mix of Holy Communion, Morning Prayer, Family worship and, when there is a fifth Sunday in the month, Café Church or we join with the worshippers at St Mark's and St Wystans for a united service.

We have a regular Lay Reader and are fortunate to have visiting retired clergy with P.T.O. to support our worship.





Service music is delivered either through recorded music or played live on the organ or piano. Many weeks we are blessed to have church members meet together in a house group. The focus is on Bible study (currently with the help of The Chosen, which is used as springboard for discussion), prayer and supporting one another in our walk with Christ.

We are an easy-going community who value worship that is accessible and inclusive for all our members, regardless of need or ability, but maintaining a strong Spirit-filled focus.

#### Additional Services

During Holy Week we have met each evening for Night Prayer and Reflection, alternating between each of the three churches. On Good Friday St Wystan's and St Mark's each hold 'An hour at the cross' service, as well as St Mark's welcoming families to church for craft, songs and hot cross buns in the morning.

St Mark's have Carols by Candlelight (usually Advent 3/4) and Christingle with scratch nativity on Christmas Eve, which are both well attended by the community, as is the Carol Service for St Wystan's on the Sunday before Christmas.

St Mark's and St Wystan's both have Midnight mass and a service, usually with Eucharist on Christmas morning.

St Wystan's Christingle, and Mothering Sunday services are especially family focused, starting at the later than usual time of 10am.

Remembrance Sunday services are well attended by the wider community, with St Wystan's service following the laying of wreaths on The Green outside church and at St Mark's the 22nd Burton-on-Trent (St Mark's) Scout Group are closely involved, including in the reading of names from the memorial boards in church and parading their standards.



# LIFE EVENTS MINISTRY

## St Mark's

Throughout 2024 St Mark's held 17 baptisms, 3 weddings and 18 funerals. Our baptism team work alongside ministers to arrange suitable baptism dates and to properly prepare candidates and their families. Those who wish to be kept informed are regularly invited to special events and services. It has been a delight to welcome several families from our Bumps, Babies and Beyond group on Tuesday mornings to bring their little ones for baptism. We have also been pleased to welcome a number of young adults from our congregation to baptism and confirmation in recent years and have hopes that some of the teenagers who have started to regularly attend might continue their commitment of faith in this way too.

When funerals of church members have taken place we have on a few occasions been fortunate to offer the space and hospitality of St Mark's to families and friends who stay on following the service to celebrate and remember the loved one now passed away.

## St Wystans

We are blessed with two excellent church wardens, who include in their service a considerable amount of time with those who seek baptism, weddings or funerals in the church. We have now instated two lay members to serve as our Baptism team to ease their load. We intend to reinstate our previous practice of sending all children baptised at the church, and their parents, individual invitations to the Mothering Sunday and Christingle services.

Couples who come to hear their banns being read in the church are encouraged to stay for coffee and chat with us, and come after their wedding to join in our worship. In 2024 there was one baptism, four funerals, one wedding, one renewal of vows and one interment of ashes. From January to the end of September 2025 there has been one baptism, three funerals, one thanksgiving service, one adult congregation member was confirmed and another adult is being prepared for confirmation.

On November 6th we will be hosting the deanery confirmation service.

## Immanuel

Sadly, in recent years there have been more funerals than weddings or baptisms, at Immanuel, but our large capacity and a carpark enable larger services to take place with ease.





# MISSION AND MINISTRY

Our churches are comprised of welcoming congregations who strive to continue the work of Jesus. Our worship styles vary between churches, but we enjoy sharing fellowship and worship together and pray for someone who can guide us and help to grow.

+ Welcoming all + Worshiping God + Reaching out to share His love +

The three-part strapline curated during a St Mark's PCC away day in 2019 underpins much of the vision within our communities. On the surface these points are obvious, but within each are challenges which we as individuals and the church as a whole should not ignore.

Welcoming all. We seek to welcome everyone who steps through our doors and who we meet outside church. Each person is a beloved child of God who should feel that church can be a place for them to come, to feel loved and listened to.

Worshiping God. We are reminded that this is a life-long commitment and wholehearted relationship, more than a weekly task to tick off our to-do list.

Reaching out to share God's love. We strive to reach into the communities we serve, to be the hand, eyes, ears and heart of Christ where we are. Yet acknowledge there is still much more we can do.

Read more about our straplines here <https://www.stmarkswinshill.co.uk/about-us>

'The harvest is ready but the workers are few' probably best indicates where Immanuel feel they are in regard to mission and ministry currently. We are a nurturing church, offering a friendly and warm welcome to all who visit and we aim to support them wherever they are in their spiritual journey. We know that there are so many opportunities yet to be explored and we are excited to be considering them and praying that we will have the resources (human and financial) to reach out.



# TEAM

We are blessed by our current ministry team consisting of local retired Vicars, Revd Richard Tebbs, Revd June Scott and Canon Geoffrey Willett, as well as Licensed Readers Gill Jackson, based at Immanuel and supporting the Family services at St Mark's, and Mervyn John based at St Wystan's.

The Ministry Team is shared across all three churches. The team were all active within the benefice, and some further afield, prior to our Vacancy, but have stepped up admirably to ensure our regular pattern of worship, including sharing the Eucharist, has been able to continue across all three churches.

We are grateful to each of them and to our Church Wardens, Keith Mann and Hamish Methven (St Mark's), Mervyn John and Rodney Fry (St Wystan's), and Andy Pearce (Immanuel), as well as a number of others who dutifully give much of themselves for our churches and communities.

At each church members will read lessons, take intercessions, help lead services, offer technical support where required, and fulfil the wide and varied roles to support our church leaders and uphold its members.

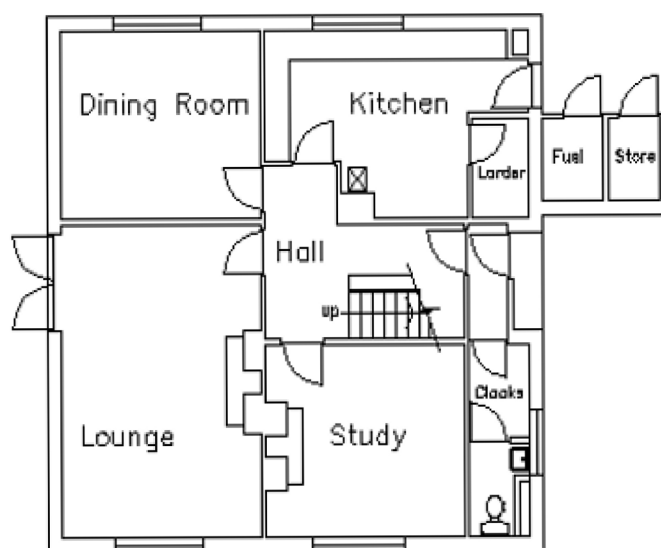




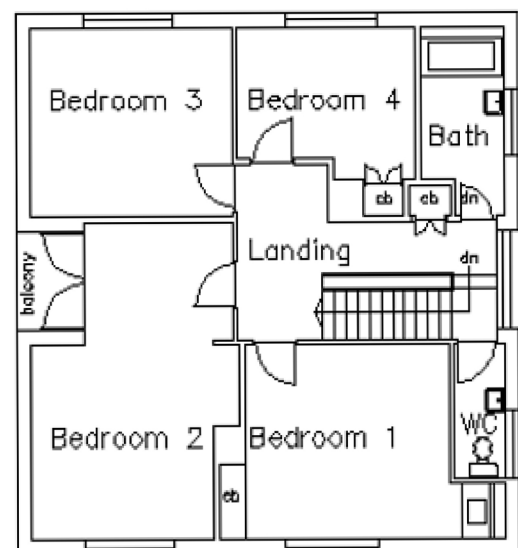
# CHURCH BUILDINGS

## Vicarage

The Vicarage, situated at number 54 Mill Hill Lane, Winshill is a 4 bedroom house, built in the 1970s. It has gas central heating and a large garden, mostly laid to lawn. It is within easy walking distance of St Mark's Church, and less than 10 minutes drive from St Wystan's and Immanuel.



Ground Floor Plan



First Floor Plan



# Safeguarding

The Parish Safeguarding Officer and DBS Administrator from St Mark's also oversee the Safeguarding needs and requirements of St Wystan's and Immanuel churches. Using the Safeguarding Dashboard and Hub they ensure we remain up to date with necessary training, DBS checks and policy requirements.

We are committed to ensuring our churches remain a safe place for all and keep the safeguarding of all as a priority.



# FINANCE

## St Mark's

In 2024 St Mark's raised £33,000 for the urgent repair of our South roof. The congregation were phenomenal in their support and with help from insurance and fundraising the total was raised and the work completed. It did however mean that other projects were put on hold and payment to the common fund was unfortunately reduced. Pre-Covid we always paid in full and hope to get back to giving our full support soon.

St Mark's give generously to charity, all funds from after-service refreshments are donated to chosen national and international charities, (between £300-£600 every two months). The Children's Society also receives funds annually from the Christingle Service and Christmas giving, and every Harvest we support either the Bishop's Harvest appeal or another suitable charity.

## St Wystan's

The Financial Position at St Wystan's Bretby is a healthy one generally but at the last Quinquennial Inspection a considerable amount of repair work to the stonework and stained-glass windows was noted to be done within a short time scale. The PCC has been working towards the completion of this and has appointed architects to oversee it and a stone mason/glazing specialist to carry it out. In 2024 the first phase of the work was completed at a cost of some £25,000 and the second phase is due to be completed in 2025 at a further cost of £25,000. The church has the necessary funds to complete the work. It has, however, had to reduce the amount it can pay towards the Common Fund until such time as its financial position becomes clearer.





## Immanuel

Immanuel have a strong PCC with a warm heart but a robust understanding of our challenges. We gain much financially from being able to have regular lettings, but our small worshipping community and social demographic provide financial difficulties. We are mindful of the need to contribute as much of the Common Fund as we are able.

At the end of 2024, we had £24,100 in our accounts.

In 2024, we paid £6025 to the Common Fund which was 59% of the amount requested. Last year we received £5135 from collections and Tax Refunds and an additional £4938 from Hall Bookings and fund-raising activities. We have been actively promoting the use of the hall this year and as a result the amount raised for 2025 will be higher than 2024.

In 2024, we made donations of £1188 and a recent coffee morning raised money for the Leprosy Mission.

	St Mark's Winshill	St Wystan's Bretby	Immanuel, Stapenhill
Common Fund Requested 2024	£39,721	£15,760	£10,267
Common Fund Paid 2024	£28,000	£8,200	£6,025
Total income. 2024	£122,791	£31,000	£10,336
Total expenditure. 2024	£154,045	£45,166	£15,036
Restricted reserves. End of 2024	£112,395	£19,451	£15,264
Unrestricted Reserves. End of 2024	£52,763	£46,776	£8,836





# WHAT WE WILL DO FOR YOU

We hope the opportunities for missional and spiritual growth offered through our churches, with their varied worship styles and communities, will offer an exciting prospect. However, we recognise that it will have its challenges and whoever is sent to us will need support and care.

We have a heart for making people feel welcome and sharing God's love, this includes you. While we will look to you for guidance and vision, we are happy to work collaboratively with you and with one another to continue the building of God's Kingdom. As we ask you to listen, love, encourage and show compassion, so will we in turn to you.

A calling to serve us here will have both trials and great rewards. We will pray for you and with you, not to mention help you regain your strength with wonderful cakes.

## Additional information

The current burial ground at St Wystan's is nearly full but some twenty years ago a piece of land alongside the burial ground was gifted to the church specifically for the purpose of an extension. During the last two years the PCC has worked towards obtaining planning permission for the change of use, but it was difficult to obtain due to the proximity of the Ancient Monument of Bretby Castle. Permission, though, has now been granted and a Petition for Consecration has been issued by the Registrar and hopefully the ground will be consecrated during the vacancy.

There is another area of ground which was gifted to the church for burial purposes, and it is planned to sell this land during the vacancy to raise funds for the work needed to be done on the burial ground.

Immanuel has recently been supported by the benefice of St Mark's and we would very much like to become a part of the benefice once an incumbent has been appointed. Above all, we want to honour the wishes of the generous benefactor of the 1960s who wanted our church to become the spiritual heart of the estate.



# HOW TO APPLY

Thank you for reading this profile. We very much look forward to hearing from you and will be happy to supply any further information you may need.

If you have any specific questions or would value an informal pre-application conversation, then please contact:

## The Venerable Matthew Trick

Archdeacon of Derby City and South Derbyshire

Diocese of Derby

01332 388684

07711 492 628

matthew.trick@derby.anglican.org

## Safeguarding

The Diocese of Derby is committed to safeguarding and promoting the welfare of children, young people and vulnerable adults. All post holders and volunteers are expected to share this commitment. [Click here for further information on our commitment to safeguarding.](#)

All appointments are subject to acceptable pre-appointment checks, including a satisfactory Enhanced DBS Check.

## Privacy Notice

Your data is processed in line with our [Privacy Notice](#).





## Appendix 1      Demographic Information

	Winshill	Bretby	Immanuel
Deprivation rank (1=most deprived, 12,161=least deprived)	4,317	9,252	1,003
Parish population (2021 census)	9,372	791	5,959
Parish number of occupied households	3,819	331	2,708
Area (square miles)	1.7	2.5	0.8
Population density (people per square mile)	5,362	319	7,564
% aged 0-4	5.5	2.5	6
% aged 5-19	18.3	13	16.9
% aged 20-29	11	6.2	13.2
% aged 30-44	18	13.4	20.2
% aged 45-69	31.8	41.7	30.9
% aged 70 and over	15.4	23.2	12.8
% Asian ethnicity	2.8	3.2	2.5
% Black ethnicity	0.6	0.6	0.8
% Mixed ethnicity	2.7	2.1	2.3
% White ethnicity	93.3	94.1	93.8
% Other ethnicity	0.7	0	0.6
% Buddhist	0.2	0.2	0.3
% Christian	51.8	50.7	47.2
% Hindu	0.2	1.2	0.2
% Jewish	0	0	0
% Muslim	1.6	0	1.7
% Sikh	0.3	1.4	0.3
% Other religion	0.5	0.4	0.5
% No religion	39.6	36.4	43.8
% Religion not stated	5.8	9.7	6
Rural/Urban classification	Urban	Rural	Urban
% Area urban	58	16.7	72.7
Parish legal name	Winshill	Bretby	Immanuel, Stapenhill
Benefice	Winshill and Bretby		Stapenhill Immanuel
Deanery	Mercia		
Archdeaconry	Derby City & South Derbyshire		
Diocese	Derby		
Listed building grade	II	II	n/a

**Appendix 2****Regular weekly services**

<b>Sunday of the month</b>	<b>Time</b>	<b>Service</b>	<b>Church</b>
<b>1st Sunday</b>	9.15	Holy Communion	St Wystan's
	10.45	Parish Eucharist	St Mark's
	11.00	All Age Service	Immanuel
	18.00	Evensong	St Mark's
<b>2nd Sunday</b>	9.15	Holy Communion	St Wystan's
	10.45	Family Service	St Mark's
	11.00	Holy Communion	Immanuel
	18.00	Celtic Communion	St Mark's
<b>3rd Sunday</b>	9.15	Service of the Word	St Wystan's
	10.45	Parish Eucharist	St Mark's
	11.00	Service of the Word	Immanuel
	18.00	Café Church	St Mark's
<b>4th Sunday</b>	9.15	Holy Communion	St Wystan's
	10.45	Service of the Word with Holy Communion	St Mark's
	11.00	Holy Communion	Immanuel
<b>5th Sunday</b>	10.00	Joint service	Alternates between the churches

<b>Wednesdays</b>	10.15	Said Holy Communion	St Mark's
<b>Fridays</b>	18.00	Be still... (quiet prayer)	St Mark's